

FOCUS ON PREVENTION is a 10 year county-wide initiative that aims to improve the quality of life of all Stanislaus County residents and families through coordinated prevention efforts working across multiple sectors.

FOCUS ON PREVENTION STEWARDSHIP ADVISORY GROUP



Brad Hawn, Neighborhoods Modesto Neighborhoods, Inc.

Focus on Prevention Stewardship Council is led by it's Advisory Group (pictured below). The Advisory Group meets monthly prior to Stewardship Council meetings to develop the agenda, vet proposals and form recommendations to bring forward at Stewardship Council meetings. All recommendations are made based on the Focus on Prevention common agenda of improving the quality of life for all Stanislaus County residents and families through coordinated prevention efforts that work across multiple sectors.



Cindy Duenas, Non-profit Center for Human Services



Marvin Jacobo, Faith Community



Marian Kaanon, Philanthropy Stanislaus Community Foundation



Francine Diciano, Philanthropy United Way of Stanislaus County



Stan Risen, Retired Stanislaus County CEO



Terry Withrow, County Board of Supervisors



Michelle Tetreault, United Way Stanislaus County



Ruben Imperial, Stanislaus County Chief Executive Office

DID YOU KNOW?

EVERY NIGHT OVER 1,250 SHELTER BEDS ARE FILLED TO CAPACITY THROUGHOUT STANISLAUS COUNTY

557 
Emergency Shelter

83 
Rapid Re-Housing

262 
Transitional Housing

359 
Permanent Supportive Housing

Statistics provided by the 2017 HIC Count

STEWARDSHIP COUNCIL LEADERSHIP

10 COMMUNITY SECTORS WORKING IN COLLABORATION FOR CHANGE

1 ARTS, ENTERTAINMENT, SPORTS

Lynn Dickerson
Gallo Center for the Arts

Darrell Long
Stanislaus County Fair Commission

2 BUSINESS

Tim Byrd
E.J. Gallo

3 EDUCATION

Tom Changnon
Stanislaus County Office of Education

Dr. Kim Greer
Stanislaus State

4 FAITH

Marvin Jacobo
City Ministry Network

Ross Lee
Community

Jim Applegate
Redeemer Church

5 HEALTH

Daryn Kumar
Sutter Health

Warren Kirk
Doctors Medical Center

6 GOVERNMENT

Jeff Dirkse
Stanislaus Sheriff Department

Mike Hamasaki
Stanislaus County Probation

7 MEDIA

Christine Schweininger
Vision Magazine

8 NEIGHBORHOODS

Brad Hawn
Modesto Neighborhoods, Inc.

Jim Holgerson
Community

9 NON-PROFITS

Cindy Duenas
Center for Human Services

Karen Williams
Learning Quest

10 PHILANTHROPY

Marian Kaanon
Stanislaus Community Foundation

Francine DiCiano
United Way of Stanislaus County

* EX OFFICIO MEMBER

Jody Hayes
Stanislaus County CEO

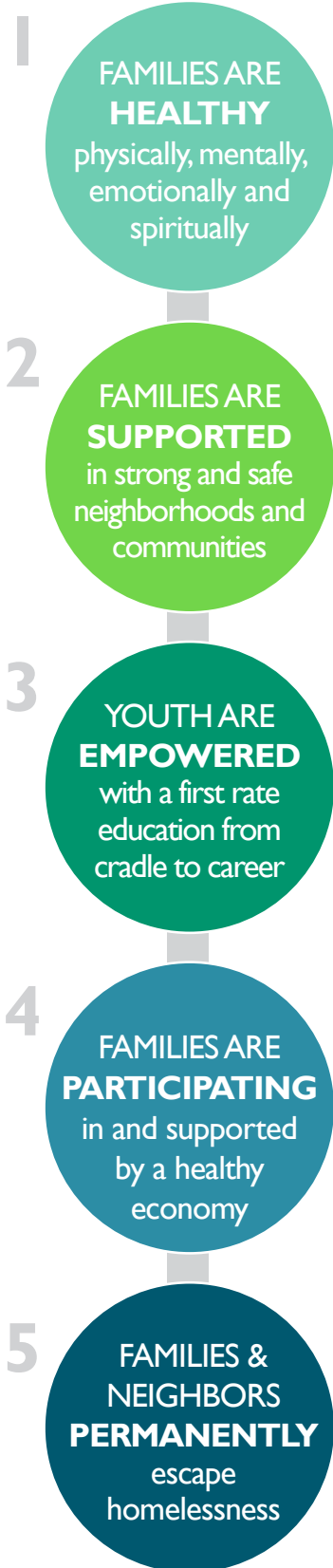
Terry Withrow
Stanislaus County Board of Supervisors

Stan Risen
Retired Stanislaus County CEO

Michelle Tetreault
United Way Chair, Health Plan of San Joaquin

FoP 5 RESULT AREAS

The Focus on Prevention movement is driven to achieve and sustain five strategic results to improve the lives of families and communities in Stanislaus County



UPDATES

HOMELESSNESS (CSOC)

SUMMARY

In March 2017, Stanislaus Community System of Care (CSOC) Leadership Structure was formed. The new 25-member CSOC provides overall guidance for the Homelessness Community System of Care, working across multiple sectors to sustain the vision, energy, and commitment to innovate new ways to reduce and prevent homelessness.

At the February 15th Community System of Care meeting three priorities areas were identified and approved. CSOC will focus all efforts toward achieving progress in the following areas.

1. NOTICE OF FUNDING AVAILABILITY (NOFA)

HomeBase provided a complete synopsis on the areas and services that need improvement. CSOC agreed to focus efforts to strengthen those areas in order to maintain current funding and secure additional funding. Aaron Farnon will send out the synopsis to the CSOC Council for review.

2. COORDINATED ENTRY

The City of Modesto and Stanislaus County are meeting with grantees to address potential impacts with the implementation of the Coordinated Entry System. Once these items are addressed the CSOC Coordinated Access Committee will meet to provide a final Implementation Action Plan proposal to the CSOC Advisory Council.

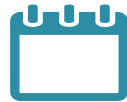
3. HOUSING

An overview of the January Housing Committee meeting was provided by Jim Kruse. The committee is establishing a structure that incorporates forming, planning, financing, marketing, and outreach components. Currently, the committee is engaging and inviting landlords to offer section housing as an affordable housing solution.

ACCESS CENTER UPDATE

The Access Center Visioning Proposal was submitted and approved by Stanislaus County Board of Supervisors on February 27, 2018. The proposal included initiating the planning process for a permanent Access Center, while opening a Temporary Emergency Shelter and Day Center as an immediate action. The Temporary Emergency Shelter and Day Center will be unique as the only "low barrier" shelter in Stanislaus County. It will house 60 individuals with accommodations for their partners, pets and possessions. The details of the project are still under development, but the goal is to open the shelter by summer of 2018.

STRENGTHENING FAMILIES



STRENGTHENING FAMILIES LEADERSHIP MEETING

Decision points will include

Approval of target population
• Individuals in the Day Reporting Center (DRC) and their families

OR

• Begin with the population identified through the DRC and include a population of individuals from the REACT Center.

200↑

INCREASE IN IDENTIFIED SERVICES

Since the beginning of the process the asset map has grown from 154 services to over 200 with Employment and other programs still left to map. That is over 50 additional services that can be offered to individuals in need.



ASSET MAPPING

Asset Mapping for the following areas has been completed.

- Assessment/Individual Plans
- Case Management
- Basic Needs and Support
- Health Support
- Behavioral Health
- Education
- Employment Support

LOOKING FORWARD

Strengthening Families Leadership Group is currently in the process of developing a strategic plan to determine how to focus our efforts for each of the populations identified in the asset map over the next year.

CRADLE TO CAREER COLLABORATION

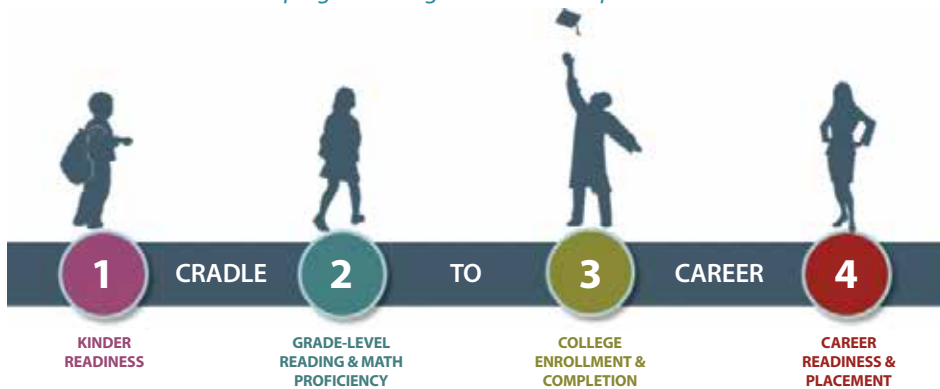
After several years of working to increase grade-level reading proficiency with Stanislaus READS! and high school to college matriculation through Stanislaus Futures, Stanislaus Community Foundation is working with multiple education and private industry partners to build a larger Cradle to Career partnership.



The new Cradle to Career partnership scales early wins through Stanislaus Futures beyond initial pilot schools. Working with the Stanislaus County Office of Education, the Children & Families Commission, Stanislaus County Libraries, Opportunity Stanislaus, private industry, local school districts and nonprofits, the goal of the Cradle to Career Partnership is to align systems and resources to impact population-level change in Stanislaus County in the following areas:

- Kinder readiness
- Grade-level reading & math proficiency
- College enrollment & completion
- Career readiness & placement

Guided by a cross-sector group of leaders, the Cradle to Career partnership will meet on **April 30th** to begin visioning its work and developing shared agreement on the path ahead.

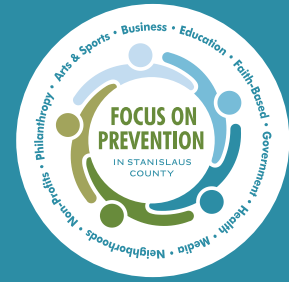


MAKING OUTREACH MOBILE: SUCCESS IN GRACEADA PARK

The Outreach and Engagement Mobile Access Center event at Graceada Park was a success! This event was an opportunity to create an environment to seek and accept services and where outreach staff could connect and build relationships with neighbors experiencing homelessness.

Through dignity and respect, empowering people at risk or experiencing homelessness, toward a hopeful and independent life.

On February 7, 2018 the Stanislaus Community System of Care Outreach and Engagement Team, a group of multi-sector community partners and agencies set up in the park to provide services for individuals experiencing homelessness. Twenty one agencies passed out care packages and most importantly support services including shelter, access to healthcare and benefits establishment.



CONNECT WITH US



www.focusprevention.net
www.stancsoc.com



CSOC Agendas & Updates
csocstan.com/subscribe

FoP updates

preventionfocus.net and click about/contact us



Stanislaus Community System of Care
[@stancsoc](https://www.facebook.com/stancsoc)



Focus on Prevention
[@stanislausfocus](https://twitter.com/stanislausfocus)

Thank You!

Thank you to these partners who made the mobile outreach event a success!

- Turning Point
- Telecare
- Behavioral Health and Recovery Services
- Center for Human Services
- Community Services Agency
- Genesis
- Josie's Place
- Stanislaus Recovery Center
- Western Dental
- Community Impact Central Valley
- West Care
- Stanislaus County Aging & Veteran's Services
- Disability Resource Agency for Independent Living
- Community Housing and Shelter Services
- Golden Valley Health Center
- Modesto Police Department
- Modesto Gospel Mission
- Stanislaus County Probation
- Stanislaus County Chief Executive Office
- Americana Barbershop & Grooming Parlor
- United Way of Stanislaus County 211