



There is no other.

Homelessness

Stanislaus Community System of Care (CSOC)

Strengthening Families



[www.focusprevention.net](http://www.focusprevention.net)  
[www.csocstan.com](http://www.csocstan.com)



CSOC Agendas & Updates  
[csocstan.com/subscribe](http://csocstan.com/subscribe)

**FoP updates**  
preventionfocus.net and  
click about/contact us

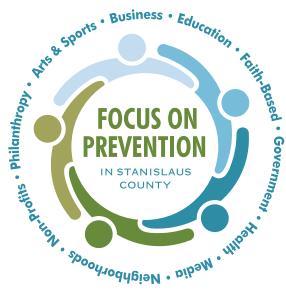


Focus on Prevention  
@stanislausfocus



Stanislaus Community  
System of Care  
@stancsoc





**FOCUS ON PREVENTION** is a 10 year county-wide initiative that aims to improve the quality of life of all Stanislaus County residents and families through coordinated prevention efforts working across multiple sectors.

## STRENGTHENING FAMILIES LEADERSHIP GROUP

*We are building a movement that supports and strengthens every family in our county*

The Focus on Prevention Strengthening Families movement is led by its Leadership Group (listed below). The next meeting of the Strengthening Families Leadership Group will be April 23, 2018.

|   |   |
|---|---|
| <b>Rick Armendariz</b><br>City of Modesto Police Department                     | <b>Judy Kindle</b><br>Sierra Vista Child and Family Services            |
| <b>Baljit Atwal</b><br>Department of Child Support Services                     | <b>David Jones</b><br>Children and Families Commission                  |
| <b>Pedro Beltran</b><br>Stanislaus County Sheriff's Department                  | <b>Kimberly Greer</b><br>California State University, Stanislaus        |
| <b>Bryan Whitemeyer</b><br>City of Oakdale                                      | <b>Frank Martinez</b><br>Stanislaus County Sheriff's Department         |
| <b>Galen Carroll</b><br>City of Modesto Police Department                       | <b>Jacobo Marvin</b><br>City Ministry Network                           |
| <b>Cindy Duenas</b><br>Center for Human Services                                | <b>Becky Meredith</b><br>Chief Executive Office                         |
| <b>Clint Faria</b><br>California Department of Corrections and Rehabilitation   | <b>Michael Holland</b><br>City of Newman                                |
| <b>Carol Shipley</b><br>Stanislaus County Family Justice Center                 | <b>Jennifer Pimentel</b><br>Clerk of the Board of Supervisors           |
| <b>Richard DeGette</b><br>Stanislaus County of Behavioral and Recovery Services | <b>Tina Rocha</b><br>Stanislaus County Chief Executive Office           |
| <b>Jeff Dirkse</b><br>Stanislaus County Sheriff's Department                    | <b>Ruben Villalobos</b><br>Superior Court of Stanislaus County          |
| <b>Birgit Fladager</b><br>Stanislaus County District Attorney                   | <b>Sandip Sandhu</b><br>Stanislaus County Office of the Public Defender |
| <b>Doris Foster</b><br>Department of Workforce Development                      | <b>Scott Kuykendall</b><br>Stanislaus County Office of Education        |
| <b>Mike Hamasaki</b><br>Probation   | <b>James Todd</b><br>Yosemite Community College District                |
| <b>Kathryn Harwell</b><br>Community Services Agency                             | <b>Terry Withrow</b><br>Stanislaus County Board of Supervisors          |
| <b>Jody Hayes</b><br>Stanislaus County Chief Executive Office                   |   |



## OUTREACH AND PARTNERSHIPS LEAD TO TREATMENT

A downtown merchant recently contacted the Outreach & Engagement Team to ask for assistance for a person who was staying in the parking lot behind their building. Calls like these are ideal for Outreach staff to make location visits, connect with the people they encounter and offer services that can improve their lives.

On this visit they encountered an individual and through talking with him found that he was an alcoholic and wanted treatment. He was a productive member of society with a stable job, but he began drinking after a traumatic life event and lost his job, house and family.

Outreach staff facilitated a connection to the New Life Program at the Modesto Gospel Mission, a 16 month residential substance abuse treatment program and he has accepted moving forward with the program. He will be housed for the duration of his treatment plan.

**The Outreach and Engagement Center is located at 825 12th Street, Modesto Call 209-272-8800**



## HOST HOUSE IS HELPING OTHERS SLEEP TONIGHT

In alignment with Focus on Prevention, HOST House is providing assistance to and helping individuals in Patterson escape homelessness. Every night they offer rest, food, and opportunities to homeless and working-poor citizens by assisting with or providing.

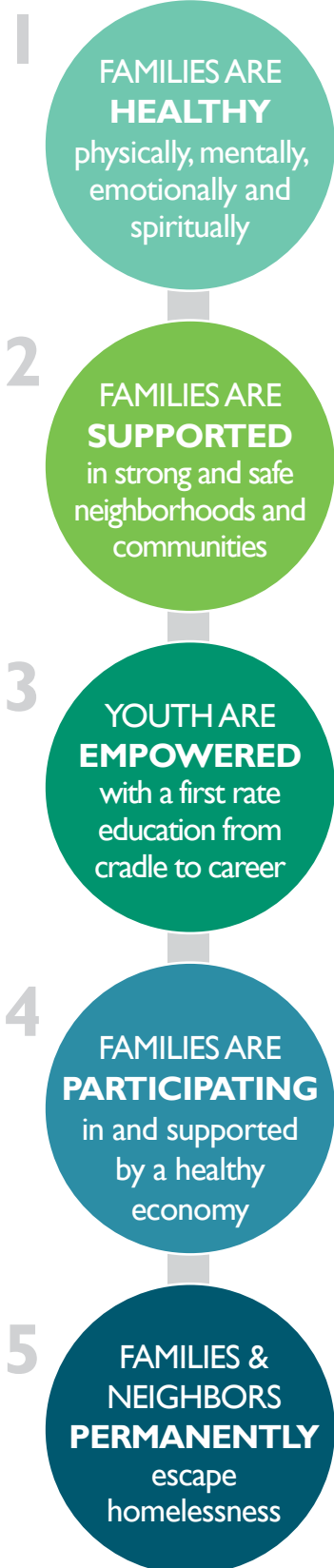


**Shelter** - temporary housing during the winter season  
**Food** - covering all basic food groups  
**Clothing** - shoes, jackets, sweaters, pants  
**Toiletries** - toothpaste/brush, soap, towels  
**Labor Pool** - assist in paying for themselves

Host House • 405 S 4th St. • Patterson, California • 209.894.2652

## FoP 5 RESULT AREAS

The Focus on Prevention movement is driven to achieve and sustain five strategic results to improve the lives of families and communities in Stanislaus County



# FOCUS ON PREVENTION INITIATIVE UPDATES

## HOMELESSNESS (CSOC)

### SUMMARY

In March 2017, Stanislaus Community System of Care (CSOC) Leadership Structure was formed. The new 25-member CSOC provides overall guidance for the Homelessness Community System of Care, working across multiple sectors to sustain the vision, energy, and commitment to innovate new ways to reduce and prevent homelessness.

At the February 15th Community System of Care meeting three priorities areas were identified and approved. CSOC will focus all efforts toward achieving progress in the following areas.

- 1. NOTICE OF FUNDING AVAILABILITY (NOFA)**
- 2. COORDINATED ENTRY**
- 3. HOUSING**

In the last 30 days CSOC Leadership has met with Home Base, a non-profit, public policy law firm dedicated to building community capacity to end homelessness and reduce poverty. Home Base will submit a proposal to assist with completion of the Notice of Funding Availability (NOFA), ensure the successful implementation of Coordinated Entry, assist in successful alignment of funding streams to increase the availability of affordable, low income and supportive housing.

CSOC Chair, Francine DiCiano will discuss the Home Base proposal at the Stewardship Council Meeting on March 22, 2018 as an informational item, then present the proposal to CSOC Advisory Board and at the upcoming CSOC meeting.

## STRENGTHENING FAMILIES

*Proposal complete for priority population while momentum builds for families & faith*



REACT Center



Day Reporting Center (DRC)

**A BETTER UNDERSTANDING**  
To better understand, assess and determine the priority population for Strengthening Families, its Leadership Group and key collaborators toured the Stanislaus County Sheriff's Office Day Reporting Center (DRC) and REACT Center.

**PRIORITY POPULATION IDENTIFIED** After a thorough assessment of the services currently provided to clients at both the DRC and REACT Center it was determined that the priority population served by the Strengthening Families initiative will be individuals in the DRC and REACT Center who are, or have been engaged in the juvenile or criminal justice system, their families and families that have been directly affected by their actions.

**ASSET MAPPING COMPLETE** The asset mapping process has been completed. There has been a slight increase in total services included in the mapping as additional services for affected families have been included. Thank you to Sierra Vista and SCOE for helping to expand these service categories. Submit any additional services to Lisa Clifton by email [cliftonl@stancounty.org](mailto:cliftonl@stancounty.org)

**FAITH SECTOR PROGRAM MAPPING** Stewardship Council Leadership for the faith sector, Marvin Jacobo, Ross Lee and Jim Applegate have appointed Jeff Norman, a longtime pastor with Modesto Covenant Church, to begin the process of mapping faith sector programs serving the priority population. A preliminary survey has already been sent out and updates will be provided to Strengthening Families Leadership Group.



**NEXT STEPS** After careful review of all information gathered for the Strengthening Families initiative a Proposal of Action has been completed. It will be presented to the Strengthening Families Leadership Group at their meeting on April 23, 2018 where they will review the presentation and make recommendations on the following topics

- Review Priority Population & Findings from DRC walk through and life cycle meeting
- Strengthening Families Common Agenda
  - Indicators of success & Strategies for providing service
- Review Action Schedule
- Planning Time line Recommendations & Acceptance





# STEWARDSHIP COUNCIL LEADERSHIP

10 COMMUNITY SECTORS WORKING IN COLLABORATION FOR CHANGE

## 1 ARTS, ENTERTAINMENT, SPORTS

- Lynn Dickerson  
Gallo Center for the Arts
- Darrell Long  
Stanislaus County Fair Commission

## 2 BUSINESS

- Tim Byrd  
E.J. Gallo

## 3 EDUCATION

- Tom Changnon  
Stanislaus County Office of Education
- Dr. Kim Greer  
Stanislaus State

## 4 FAITH

- Marvin Jacobo  
City Ministry Network
- Ross Lee  
Community
- Jim Applegate  
Redeemer Church

## 5 HEALTH

- Daryn Kumar  
Sutter Health
- Warren Kirk  
Doctors Medical Center

## 6 GOVERNMENT

- Jeff Dirkse  
Stanislaus Sheriff
- Mike Hamasaki  
Stanislaus County Probation

## 7 MEDIA

- Christine Schweininger  
Vision Magazine

## 8 NEIGHBORHOODS

- Brad Hawn  
Modesto Neighborhoods, Inc.
- Jim Holgerson  
Community

## 9 NON-PROFITS

- Cindy Duenas  
Center for Human Services
- Karen Williams  
Learning Quest

## 10 PHILANTHROPY

- Marian Kaanon  
Stanislaus Community Foundation
- Francine DiCiano  
United Way Stanislaus County

## \* EX OFFICIO MEMBER

- Jody Hayes  
Stanislaus County CEO
- Terry Withrow  
County Board of Supervisors
- Stan Risen  
Retired Stanislaus County CEO
- Michelle Tetreault  
United Way Chair, Health Plan of San Joaquin

## A VISION NO LONGER: REALITY OF NEW SHELTER IS NEAR

*Temporary low-barrier shelter checks off important steps on its way to becoming a reality.* The Temporary Low Barrier Emergency Shelter/Day Center will be unique as the only "low barrier" shelter in Stanislaus County. It will house 60 individuals with accommodations for their partners, pets and possessions. The details of the project are still under development, but the goal is to open the shelter by June 2018.



**Stanislaus County Board of Supervisors Approval** The Access Center Visioning Proposal was submitted and approved by Stanislaus County Board of Supervisors on February 27, 2018. During the meeting the Board of Supervisors heard presentations of support by representatives from United Way of Stanislaus County, Stanislaus Food Products and Stanislaus County. They were asked to consider supporting the vision of an Immediate Action Plan proposal for a Temporary Low Barrier Emergency Shelter/Day Center with minimal supportive services to serve the county's homeless population.



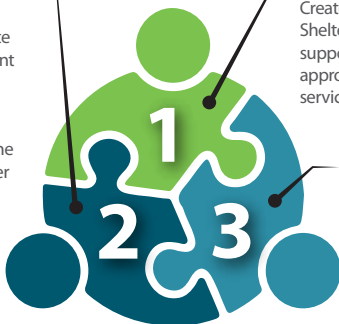
**Modesto City Council Endorsement** The Modesto City Council on Tuesday, February 27, 2018 resoundingly supported a proposal to open a temporary shelter and day center near downtown, which would offer new services for the homeless and could be operating as soon as June. Council members did not take a vote but weighed in with questions and comments after hearing a presentation. "We're very encouraged by what we heard from the council tonight," county CEO Jody Hayes said. "It appears we have a very willing partner in the City of Modesto."

### Low Barrier Shelter is just a piece of the puzzle- Taking a Strategic Implementation Approach

Stanislaus Community System of Care has taken a strategic implementation approach to helping families and neighbors in Stanislaus County permanently escape homelessness. This cohesive three-pronged strategy is key to achieving the desired results.

#### 2. LONG TERM SOLUTION

Simultaneously initiate a plan for development of the permanent Access Center. Open within the 3 year operation period of the Temporary Low Barrier Shelter/Day Center.



#### 1. ACT NOW!

Create Temporary Low Barrier Shelter/Day Center with minimal supportive services and a tiered approach for other adjacent services. Open in June 2018

#### 3. ADDITIONAL PERMANENT HOUSING

Focus on increasing the availability of affordable, low income and supportive housing in Stanislaus County.

*The proposal for the Low Barrier/Emergency Shelter/Day Center has been made possible through a public/private collaboration emerging from the county-wide Focus on Prevention initiative.*

