



Stanislaus Homeless Alliance

A collaborative entity formed to align homelessness services, planning, and funding among stakeholders in Stanislaus County.

Wednesday, June 12, 2024

Agenda

- I. Roll Call – Stanislaus Homeless Alliance Representatives
- II. Public Comment Period
- III. Action Items
- IV. Informational Items
- V. Committee Reporting
- VI. General Membership Announcements
- VII. Adjournment

Agenda Item I – Roll Call

Agency	Primary Voting Member	Alternate Voting Member
City of Ceres	James Casey	Rosalinda Vierra
City of Modesto	David Wright	Joe Lopez
City of Riverbank	Darlene Barber-Martinez	Marisela Garcia
City of Patterson	Shivaugn Alves	Ken Irwin
City of Turlock	Pam Franco	Reagan Wilson
City of Oakdale	Christopher Smith	Brian Whitemyer
City of Waterford	Elizabeth Talbott	Mike Pitcock
Community System of Care	Fred Berry	Maryn Pitt
Focus on Prevention	Brad Hawn (Chair)	Tim Byrd
Stanislaus County	Terry Withrow	Jody Hayes
Stanislaus Regional Housing Authority	Carlos Estacio III	Jim Kruse

Agenda Item II – Public Comment Period

*PUBLIC COMMENT: Matters under the jurisdiction of the SHA and not on this posted agenda may be addressed by the general public at this time. However, California law prohibits the SHA from taking any action on a matter that is not on the posted agenda unless it is determined to be an emergency by the SHA. Any member of the public wishing to address the SHA during the “Public Comment” period shall be permitted to be heard once for up to **5** minutes.*

To make a comment please complete a Request to Comment form (available at the entrance to Chambers) and provide it to staff. Speakers will be recognized by the SHA Chairperson and called to the podium to speak in the order of receipt.

Agenda Item III – Action Items

- a. Minutes for April 2024 Meeting

Agenda Item IV – Informational Items

- a. Enhanced Care Management Updates/CalAIM Initiatives
- b. Turning Point Enhanced Care Management
- c. Health Net Enhanced Care Management
- d. Health Plan of San Joaquin Enhanced Care Management

Agenda Item IV (a) – Informational Items

Enhanced Care Management (EMC) Update/CalAIM Initiatives

Guest presenter: La Tosha Walden, Deputy Director, Housing and Homeless Division, Community Services Agency

Agenda Item IV (b) – Informational Items

Turning Point Enhanced Care Management

Guest presenter: Casey Ogelvie-Armstrong, Director of Enhanced Care Management and Community Services





ENHANCED CARE MANAGEMENT (ECM) & COMMUNITY SUPPORTS (CS)

INTRODUCTION

CalAIM is an initiative of the Department of Health Care Services (DHCS) to improve the quality of life and health outcomes of Medi-Cal Members by implementing delivery system, program and payment reforms across the Medi-Cal program.

A key feature of CalAIM is the statewide introduction of an **ECM** benefit and a menu of **Community Supports (CS)**, which, at the option of an MCP and a Member, can substitute for covered Medi-Cal services as cost-effective alternative services.

Managed Care Providers (MCPs) are responsible for administering both ECM and Community Supports in close collaboration with their network of community-based Providers.



INTRODUCTION *(continued)*

ECM and CS have been developed from lessons learned, as well as MCP and Provider experience, in the Whole Person Care (WPC) Pilots and Health Homes Program (HHP).

Both WPC and HHP led the way in providing a set of intensive care coordination services that spanned multiple delivery systems to provide a person-centered approach to care.

These initiatives also pushed the boundaries of a traditional health care delivery approach to begin formally considering the impact of social drivers of health (SDOH) on health outcomes and experience of care in Medi-Cal.



WHAT IS ENHANCED CARE MANAGEMENT (ECM)?

ECM is a whole-person, interdisciplinary approach to care that addresses the clinical and non-clinical needs of Members with the most complex medical and social needs.

ECM provides systematic coordination of services and comprehensive care management that is community based, interdisciplinary, high touch and person centered.

OVERARCHING GOALS

- Improving Care Coordination
- Integrating Services
- Facilitating Community Resources
- Addressing SDOH
- Improving Health Outcomes
- Decreasing Inappropriate Utilization and Duplication of Services



ECM POPULATIONS OF FOCUS

To be eligible for ECM, Members must be enrolled in a Medi-Cal Managed Care Plan and meet at least one of the ECM Populations of Focus definitions described below:

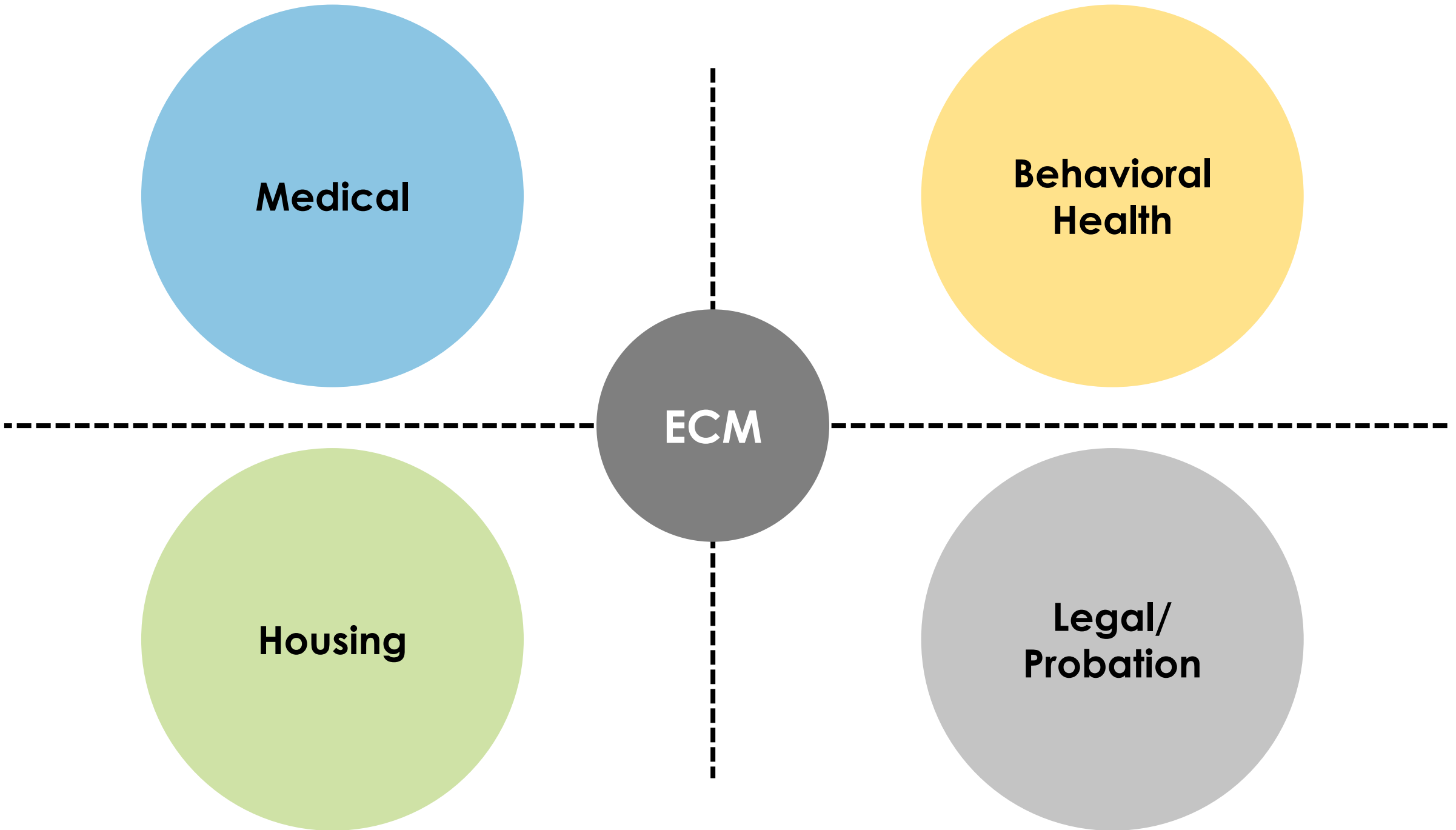
	Adults	Children & Youth
Individuals Experiencing Homelessness: <i>Adults without dependent children/youth living with them experiencing homelessness</i>	✓	
Individuals Experiencing Homelessness: <i>Homeless families or unaccompanied children/youth experiencing homelessness</i>	✓	✓
Individuals at Risk for Avoidable Hospital or ED Utilization <i>Formerly "High Utilizers"</i>	✓	✓
Individuals with Serious Mental Health and/or SUD Needs	✓	✓
Individuals Transitioning from Incarceration	✓	✓
Adults Living in the Community and At Risk for LTC Institutionalization	✓	
Adult Nursing Facility Residents Transitioning to the Community	✓	
Children and Youth Enrolled in CCS or CCS WCM with Additional Needs Beyond the CCS Condition		✓
Children and Youth Involved in Child Welfare		✓
Individuals with I/DD	✓	✓
Pregnant and Postpartum Individuals; Birth Equity Population of Focus	✓	✓

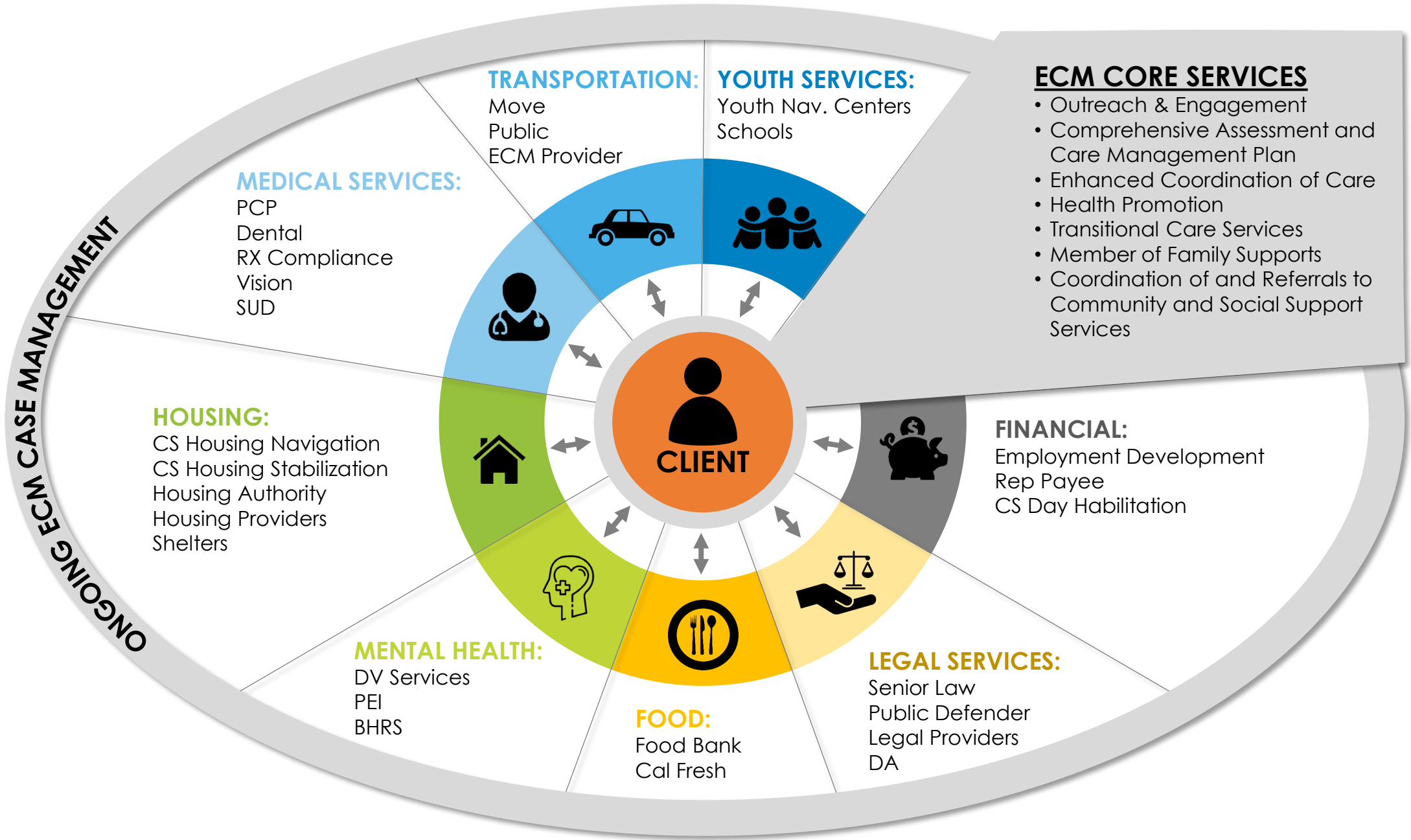
COMMUNITY SUPPORTS (CS) SERVICES

SERVICES PROVIDED

- Housing Transition Navigation Services
- Housing Deposits
- Housing Tenancy and Sustaining Services
- Short-Term Post-Hospitalization Housing
- Recuperative Care (Medical Respite)
- Respite Services
- Day Habilitation Programs
- Nursing Facility Transition/Diversion to Assisted Living Facilities
- Community Transition Services/Nursing Facility Transition to Home
- Personal Care and Homemaker Services
- Environmental Accessibility Adaptations (Home Modification)
- Medically Tailored Meals/Medically-Supportive Food
- Sobering Centers
- Asthma Remediation



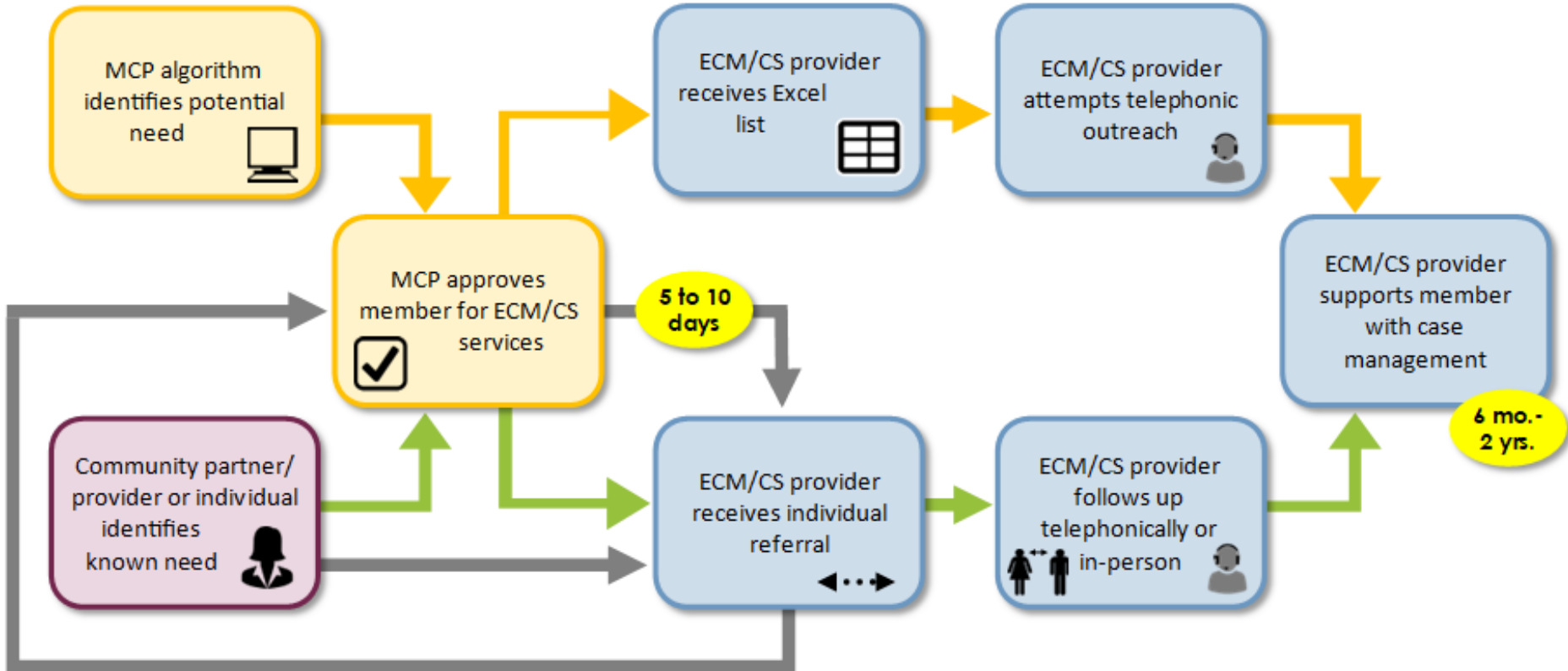






WORKFLOW PROCESS

ECM/CS REFERRAL WORKFLOW SUMMARY



- MCP-led
- Community/MCP-led
- Community/Provider-led





CASEY OGELVIE-ARMSTRONG

Director of Enhanced Care Management & Community Services

✉ caseyogelvie-armstrong@tpcp.org

☎ (916) 956-2803

Agenda Item IV (c) – Informational Items

Health Net Enhanced Care Management

Guest presenter: Vernell Shaw III, Director, Medi-Cal Regional Lead



Health Net Updates

SCAIC

June 2024

Network Updates

California Health Collaborative

Population of Focus:

- Adults -At Risk for Avoidable Hospital or Emergency Department Utilization
- Adult -Birth Equity
- Adults -living in the community at-risk for long Term Institutionalization
- Adults –Nursing Facility residents transitioning to the community
- Children & Youth -Birth Equity

John Bodtker jbodtker@healthcollaborative.org

(916) 618-7899

La Familia Central Valley

Population of Focus:

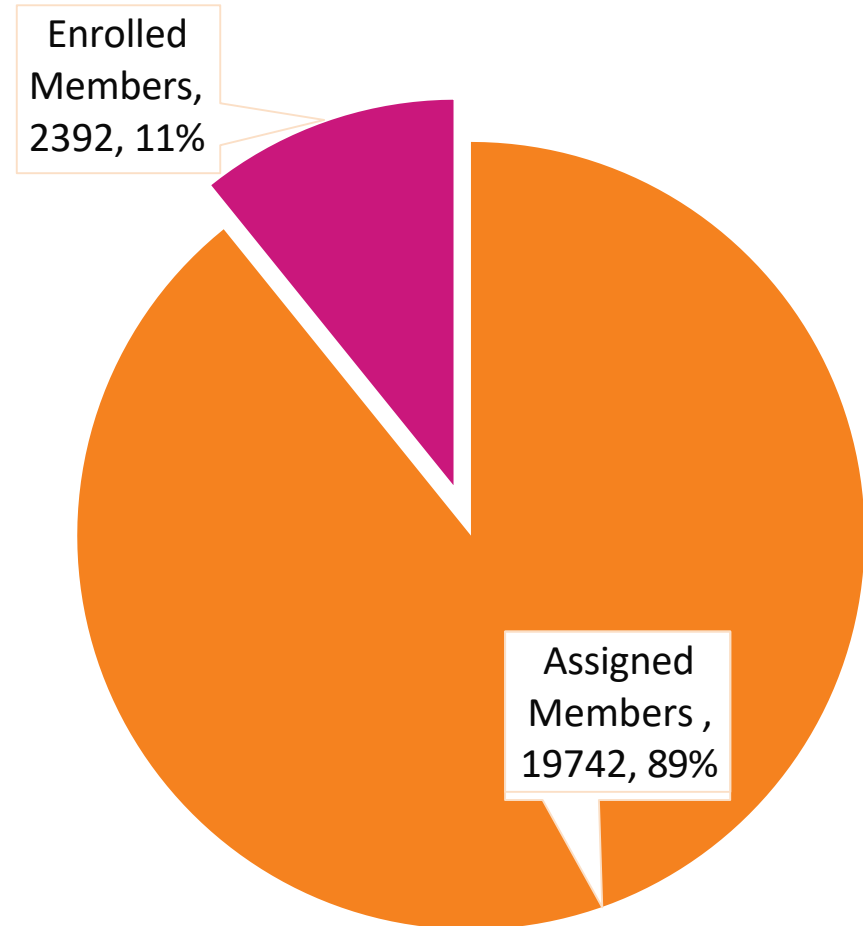
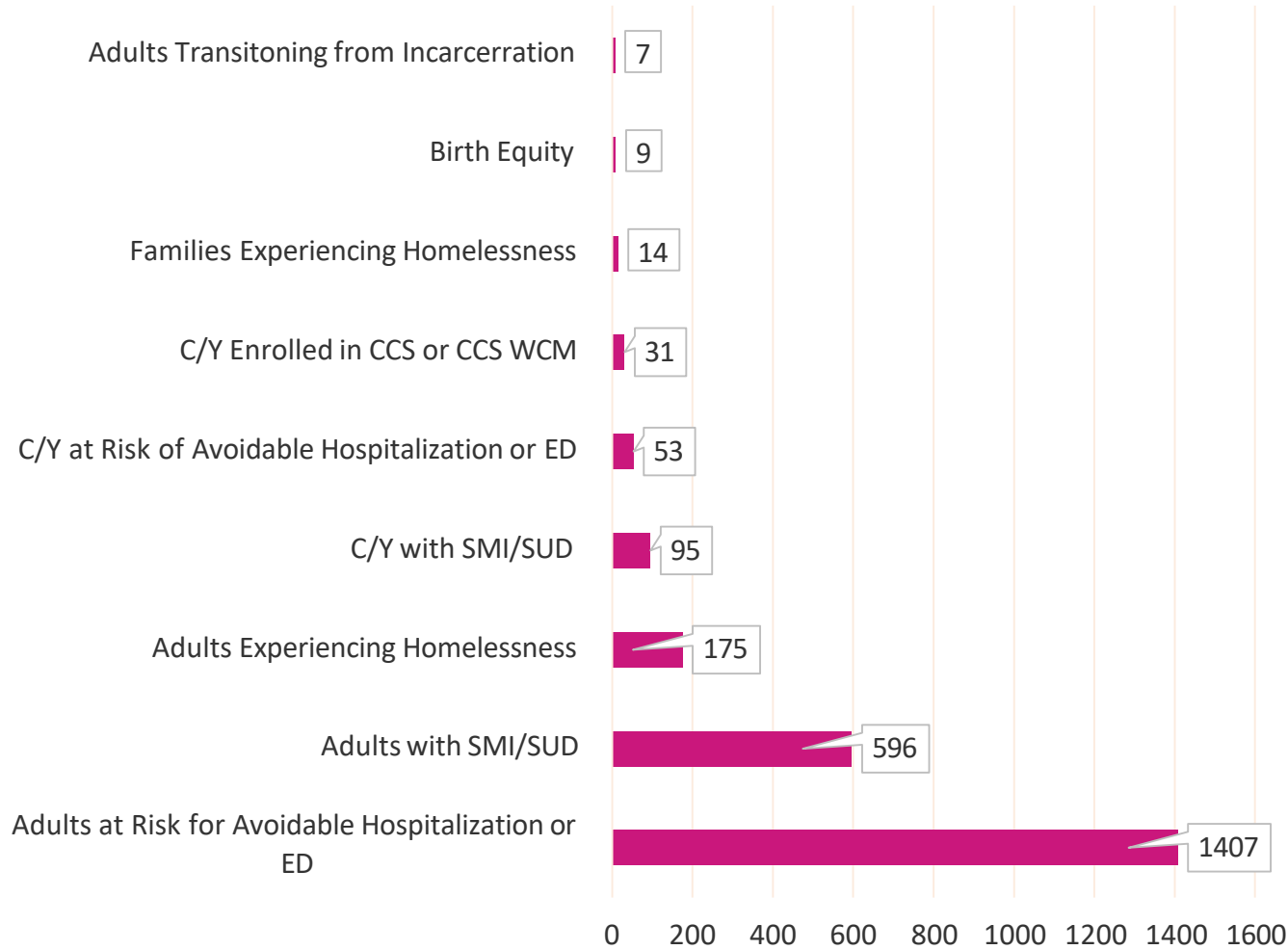
- Adults -Experiencing Homelessness
- Adults -At Risk for Avoidable Hospital or Emergency Department Utilization
- Adults -Serious Mental Health and/or SUD Needs
- Adults -NF residents transitioning to the community
- Adults-Transitioning from Incarceration
- Adults –Birth Equity
- Children & Youth -Experiencing Homelessness
- Children & Youth -At Risk for Avoidable Hospital or Emergency Department Utilization
- Children & Youth -Serious Mental Health and/or SUD Needs
- Children & Youth -Birth Equity
- Children & Youth -Transitioning from Incarceration

Juan Perez Jperez@livelafamilia.org

(209) 633-3057

Stanislaus - Enhanced Care Management

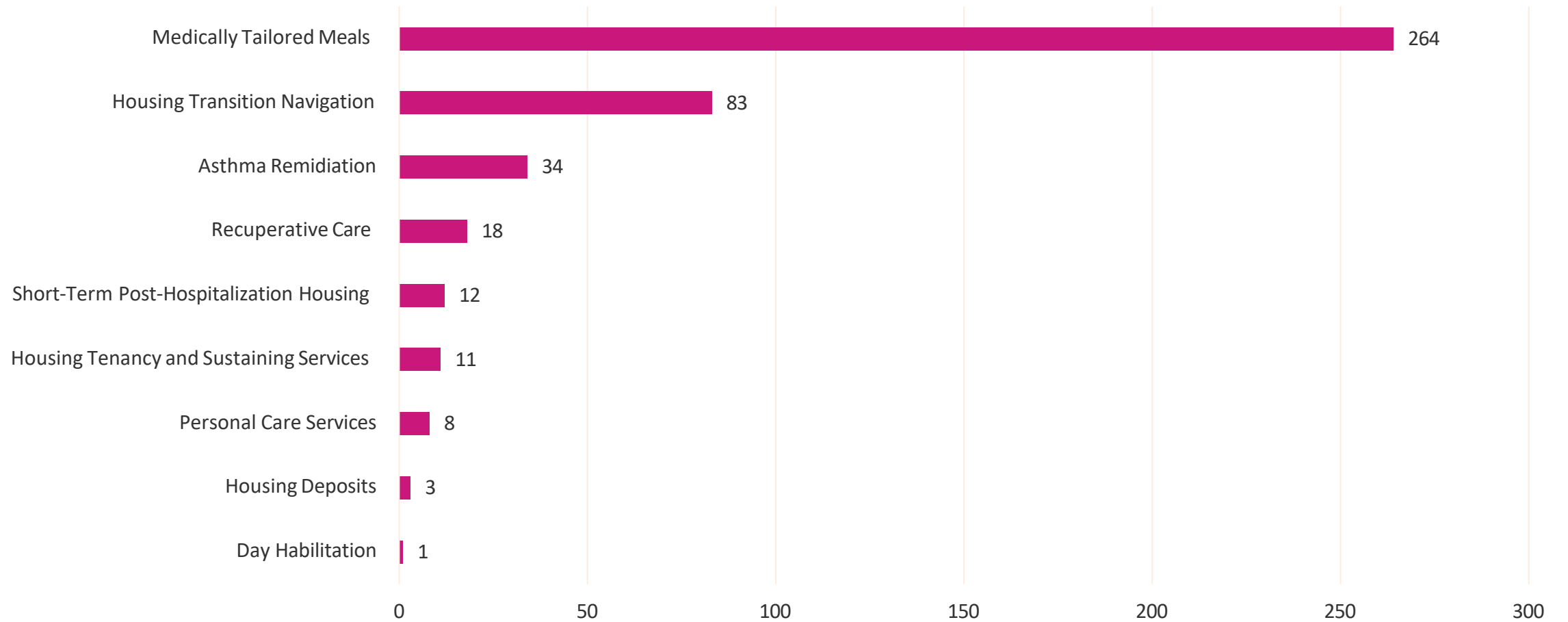
Enrolled



Data as of Q1

Stanislaus - Community Supports

Referrals



Data as of Q1

Health Net ECM Incentive

**EARN INCENTIVES IN 2024 WHEN YOU IMPROVE ENHANCED CARE MANAGEMENT (ECM)
OUTREACH AND REPORTING.**

- For 2024, Health Net of California, Inc., through the ECM Provider Incentive, will continue to recognize and reward ECM providers who demonstrate effective and timely outreach, and report regularly on members enrolled in the program and on the completion of member assessments. All payouts will be paid as a per member per month (PMPM) for all ECM-enrolled member months.
- Incentive Measures
 1. Outreach reporting within the first 90 days
 2. Enrollment Effectiveness
 3. Completion of the Capacity Report
 4. Referral to Community Supports
 5. HEDIS Performance of ECM enrolled members
 - HbA1c Control (≤ 9)
 6. HEDIS Performance of ECM enrolled members
 - High Blood Pressure
 7. Reduction in avoidable ER Visits
 8. Scheduling follow up visits 7 days post hospital discharge
 9. Community referrals for ECM or CS

Health Net ECM Enrollment Bonus Incentive

EARN BONUS INCENTIVES WHEN YOU IMPROVE ECM ENROLLMENT FOR UNHOUSED MEMBERS DISPROPORTIONATELY EXPERIENCING HOMELESSNESS

- **Health Net** is offering a bonus incentive of **\$150 per enrollment** for every new ECM enrollment of unhoused members disproportionately experiencing homelessness
- This bonus incentive is in addition to existing plan incentives
- To be eligible for the incentive you must:
 1. Be in good standing with Health Net
 2. Be contracted directly with Health Net as an ECM provider
 3. Have the capacity to serve new Health Net members eligible for ECM services

Bonus Incentive Period: March 1, 2024 – June 30, 2024

CalAIM Provider Training & Webinars

2024 Behavioral Health / ACEs Training Series

Available courses:

- [California ACEs](#)
- [Motivational Interviewing](#)
- [Social Determinants Of Health](#)
- [TIC: Trauma Across the Lifespan](#)
- [Cultural Humility](#)
- [Screening, Brief Intervention, and Referral to Treatment \(SBIRT\)](#)
- [An Introduction to the ASAM Criteria](#)
- [DeEscalation Techniques](#)

Connecting the Dots – CalAIM Provider Learning Series

Available courses:

- ECM/CS Eligibility for Children and Youth: Child Welfare
- New Services to Support Children with Complex Behavioral Health Needs
- How to Refer your Client to ECM and CS
- Sobering Centers Role in SUD Continuum of Care
- How to Co-Manage an Individual with Complex Health Needs
- Ensuring Housing Stability for Medi-Cal Members
- Cross-System Coordination to Maximize Services for the Medi-Cal Member
- Cross-System Coordination to Maximize Services for the Medi-Cal Member

Community Advisory Committee

We have local Member Advisory Committees that gives Members and community leaders like you a chance to share your thoughts and ideas with Health Net.

If you would like to join, [register here](#).

- Committee meetings are in-person or virtual. We can provide interpreters with advanced notice.
- **Current Health Net Medi-Cal members are eligible for a \$100 gift card for each meeting they attend.**

Who should attend:

- Health Net Medi-Cal members or parents and/or caregivers of a Health Net Medi-Cal member.
- Seniors and people with disabilities who want to promote better health in their communities.
- Health care providers.
- Community Advocates and leaders.
- Community Organizations and groups.
- Social service groups who provide critical resources to the community.

ADDITIONAL RESOURCES

Enhanced Care Management



Enhanced Care Management offers extra services at no cost to Medi-Cal members who have complex needs and challenges that make it hard to improve their health.

[ENHANCED CARE MANAGEMENT DETAILS FOR ADULTS](#) ➔

[ENHANCED CARE MANAGEMENT DETAILS FOR CHILDREN & YOUTH](#)

Community Supports



Community Supports are new services provided by local organizations to help Medi-Cal members reach their full health potential. There are 14 types of services that can help you.

[COMMUNITY SUPPORTS DETAILS](#) ➔

Community Health Workers



Community Health Workers (CHW) are community members that can provide expert guidance through the healthcare system. They know how to reach other groups that can help you get the care that's right for you. Download a flyer for additional information.

- [Get Help and Support for Your Healthcare Needs – English \(PDF\)](#)
- [Get Help and Support for Your Healthcare Needs – En Español \(Spanish\) \(PDF\)](#)

Doula Services



Announcing a new Health Net Member Benefit: **Doula Services.**

[Doula Services flyers](#) ➔

[LINK TO MEMBER BROCHURES](#)

CaAIM Resources for Providers

Findhelp

Use findhelp at communitysupportsecm.findhelp.com/ or scan this QR code to identify local resources, supports staff and community partners when searching for local services.



Provider directory

Find a CS provider for your patients via the Health Net* directory at www.healthnet.com/content/healthnet/en_us/members/medi-cal/provider-directory.html or scan this QR code.



Additional information

To learn more about CS or to access these services, contact **Health Net at 800-675-6110** or call the **State's Medi-Cal Health Care Options at 800-430-4263 (TTY: 800-430-7077).**

¹Housing deposits are available for members in housing navigation and housing tenancy if there is a need and all county resources have been expended.

²Only refer to providers on findhelp if their program card has been claimed with a checkmark on the right-hand corner, or else refer through provider directory.

*Health Net of California, Inc., Health Net Community Solutions, Inc. and Health Net Life Insurance Company are subsidiaries of Health Net, LLC and Centene Corporation. Health Net is a registered service mark of Health Net, LLC. All other identified trademarks/service marks remain the property of their respective companies. All rights reserved.

23-160/FLY952601EH02w (2/23)

Agenda Item IV (d) – Informational Items

Health Plan of San Joaquin Enhanced Care Management

Guest presenter: Pamela Lee, Health Plan of San Joaquin

HEALTH PLAN
OF
SAN JOAQUIN
(HPSJ)

UPDATE

HPSJ UPDATES

- DHCS Incentive Programs
 - HHIP Program Year concluded as of 12/31/23
 - Just in Stanislaus County, HHIP funding supported various housing entities to house ~180 occupants
 - Next steps: as part of the importance of HMIS, HPSJ is working with CSA to obtain user licenses for all ECM and CS Housing partners
 - CalAIM Program Year 3 (and final year) has initiated and concludes 6/30/24
 - Through IPP funding, HPSJ funded the following Stanislaus County ECM-CS Providers:
 - Turning Point
 - Modesto Gospel Mission
 - California Health Collaborative
 - Center for Human Services
 - Sierra Vista Child and Family Services

HEALTH PLAN
OF
SAN JOAQUIN
(HPSJ)

UPDATE

HPSJ UPDATES

- Justice-Involved Collaboration
 - Stanislaus County – planning to go-live 10/2026
 - MCPs have created a re-occurring monthly meeting with County correctional facilities, CSA and HMA to discuss readiness
 - MCPs collaborating on 100% provider overlap of JI-Provider
 - Sierra Vista Child & Family Services
 - Turning Point
 - EA Family Services
 - Serene Health
 - La Familia (open)
 - Received some initial release data from Correctional Facilities to gage potential population
 - Next Meeting: September 2024

HEALTH PLAN
OF
SAN JOAQUIN
(HPSJ)

UPDATE

HPSJ UPDATES

- MOU Status Update

MOU	MOU Language Status*	DHCS Review Required	Data Elements Finalized**
Child Welfare	Pending Items/Questions	No	No
IHSS	Pending Items/Questions	No	Yes
LHD	Pending Items/Questions	Yes	No
MHP/DMC-ODS	Pending Items/Questions	Yes	Yes
Regional Center (SJ-Regional Center)	Pending Items/Questions	Yes	No
WIC	Pending Completion of Reviews	Maybe	No
TCM	Pending Completion of Reviews	Maybe	No

ECM METRICS AND UTILIZATION

MAY 2024
UPDATE

# Of Members	Status			
PDF	Approved	Cancelled	Denied	Grand Total
#N/A		8	2	10
Adult Pregnancy & Postpartum	1			1
Adults Living in the Community and At Risk for LTC Institutionalization	3			3
Adults Serious Mental Illness (SMI)/SUD	5			5
Children and Youth enrolled in CCS or CCS WCM with additional needs beyond the CCS Condition		1		1
Children and Youth with Serious Mental Health and/or SUD Needs	3			3
Experiencing Homelessness	48			48
High Resource Utilization	1			1
Grand Total	61	9	2	72

# Of Auths	Status			
PDF	Approved	Cancelled	Denied	Grand Total
#N/A		8	2	10
Adult Pregnancy & Postpartum	1			1
Adults Living in the Community and At Risk for LTC Institutionalization	3			3
Adults Serious Mental Illness (SMI)/SUD	5			5
Children and Youth enrolled in CCS or CCS WCM with additional needs beyond the CCS Condition		1		1
Children and Youth with Serious Mental Health and/or SUD Needs	3			3
Experiencing Homelessness	48			48
High Resource Utilization	1			1
Grand Total	61	9	2	72

CS METRICS AND UTILIZATION

MAY 2024
UPDATE

# Of Auths	Status
CSS PDF	Approved
Asthma Remediation (AR)	34
Day Habilitation Programs (DHP)	4
Housing Deposits (HD)	12
Housing Tenancy and Sustaining Services (HTSS)	1
Housing Transition Navigation Services (HTNS)	30
Meals/Medically Tailored Meals (MTM)	27
Personal Care and Homemaker Services (PCHS)	3
Recuperative Care-Medical Respite (RC)	6
Short-term Post-Hospitalization Housing (SPHH)	1
Grand Total	118

\$ Of Members	Status
CSS PDF	Approved
Asthma Remediation (AR)	34
Day Habilitation Programs (DHP)	4
Housing Deposits (HD)	12
Housing Tenancy and Sustaining Services (HTSS)	1
Housing Transition Navigation Services (HTNS)	29
Meals/Medically Tailored Meals (MTM)	27
Personal Care and Homemaker Services (PCHS)	3
Recuperative Care-Medical Respite (RC)	6
Short-term Post-Hospitalization Housing (SPHH)	1
Grand Total	109

ECM-CS
PROVIDER
NETWORK

AND
UTILIZATION

UPDATE

PROVIDER NETWORK UPDATE:

New Provider Spotlight:

- Pacific Health Group (ECM and CS)
 - St. Vincent Preventative Family Care (ECM and CS)
 - Roots Food Group Management (CS – MTM)
 - Lifewise Renovation (Wineteer) (CS- Home Modification)
 - MasterCare (CS – Nursing Facility and Community Transition)
-
- Please continue to educate County departments on all the ECM-CS services under CalAIM to increase utilization:
 - Sobering Center – Modesto Gospel Mission
 - Home Modification
 - ECM: Children and Youth (C&Y)
 - C&Y Child Welfare – work with County on increasing utilization
 - Community Health Worker (CHW)

Agenda Item V – Committee Reporting

- a. Bridge Housing Sub-committee Update
- b. Bylaws Sub-committee

Guest presenter: Brad Hawn

Agenda Item V (a) – Committee Reporting

Bridge Housing Sub-committee Update

Guest presenter: Brad Hawn

Agenda Item V (b) – Committee Reporting

Bylaws Sub-committee Update

Guest presenter: Brad Hawn

Agenda Item VI – General Membership Announcements





Adjournment

Next Meeting: Wednesday, July 10, 2024

If you have any questions or comments, please contact CSA-SHA_Email@stancounty.com