



Stanislaus Homeless Alliance

A collaborative entity formed to align homelessness services, planning, and funding among stakeholders in Stanislaus County.

Wednesday, August 14, 2024

Agenda

- I. Roll Call – Stanislaus Homeless Alliance Representatives
- II. Public Comment Period
- III. Action Items
- IV. Informational Items
- V. General Membership Announcements
- VI. Adjournment

Agenda Item I – Roll Call

| Agency | Primary Voting Member | Alternate Voting Member |
|---------------------------------------|-------------------------|-------------------------|
| City of Ceres | James Casey | Rosalinda Vierra |
| City of Modesto | David Wright | Joe Lopez |
| City of Riverbank | Darlene Barber-Martinez | Marisela Garcia |
| City of Patterson | Shivaugn Alves | Ken Irwin |
| City of Turlock | Cassandra Abrams | Reagan Wilson |
| City of Oakdale | Christopher Smith | Brian Whitemyer |
| City of Waterford | Elizabeth Talbott | Mike Pitcock |
| Community System of Care | Fred Berry | Maryn Pitt |
| Focus on Prevention | Brad Hawn (Chair) | Tim Byrd |
| Stanislaus County | Terry Withrow | Jody Hayes |
| Stanislaus Regional Housing Authority | Carlos Estacio III | Jim Kruse |

Agenda Item II – Public Comment Period

*PUBLIC COMMENT: Matters under the jurisdiction of the SHA and not on this posted agenda may be addressed by the general public at this time. However, California law prohibits the SHA from taking any action on a matter that is not on the posted agenda unless it is determined to be an emergency by the SHA. Any member of the public wishing to address the SHA during the “Public Comment” period shall be permitted to be heard once for up to **5** minutes.*

To make a comment please complete a Request to Comment form (available at the entrance to Chambers) and provide it to staff. Speakers will be recognized by the SHA Chairperson and called to the podium to speak in the order of receipt.

Agenda Item III – Action Items

- a. Minutes for June 2024 Meeting
- b. Minutes for July 2024 Meeting

Agenda Item IV – Informational Items

- a. County HHAP
- b. CSOC HUD/HHAP
- c. HMIS Point-In-Time Count Update
- d. Kaiser Permanente ECM Update
- e. Salvation Army Update

Agenda Item IV (a) – Informational Items

County HHAP

Guest presenter: Sarah Yarbrough, Accountant III, Community Services Agency



STANISLAUS HHAP FUNDING SUMMARY

Sarah Yarbrough, CSA Finance Accountant

CSA HHAP ROUND 1 \$2,098,642

- ACES Emergency Shelter - \$1,230,750
 - Operational Subsidies
 - Expended - \$1,230,750
- Workforce Development - \$167,892
 - Youth Services Contract
 - Expended – \$95,837
- Turning Point - \$700,000
 - Housing Assessment Team (HAT)
 - Expended - \$700,000

CSA HHAP ROUND 2 \$959,379

- ACES Emergency Shelter - \$737,283
 - Operational Subsidies
 - Expended - \$737,283
- Workforce Development – \$76,750
 - Youth Services Contract
 - Expended - \$0
- Turning Point - \$19,279
 - Housing Assessment Team (HAT)
 - Expended - \$19,279
- United Way CAPk – \$126,067
 - 211 Services
 - Expended - \$126,067

CSA HHAP ROUND 3 \$2,686,262

- ACES Emergency Shelter - \$2,417,636
 - Operational Subsidies
 - Expended - \$2,417,636
- Youth Services (10%) – \$268,626
 - Center for Human Services - \$186,661
 - Expended - \$0
 - Not Awarded - \$81,965

CSA HHAP ROUND 4 \$2,315,967

- ACES Emergency Shelter - \$2,084,370
 - Operational Subsidies
 - Expended - \$1,942,066
- Youth Services (10%) – \$231,597
 - Not Awarded – Fall 2024 RFP
 - Expended - \$0

CSA HHAP ROUND 5 \$2,884,794

- Operational Subsidies Interim Housing - \$2,394,379
- Youth Services (10%) – \$288,479
- County Administration (7%) – \$201,936

Agenda Item IV (b) – Informational Items

CSOC HUD/HHAP

Guest presenter: Maryn Pitt & Kasey Houck



**CSOC HOMELESS, HOUSING,
ASSISTANCE AND PREVENTION (HHAP)**
Funded Project Highlights

CSOC HHAP FUNDED PROJECTS

Permanent Supportive Housing Project

835 California Ave., Modesto

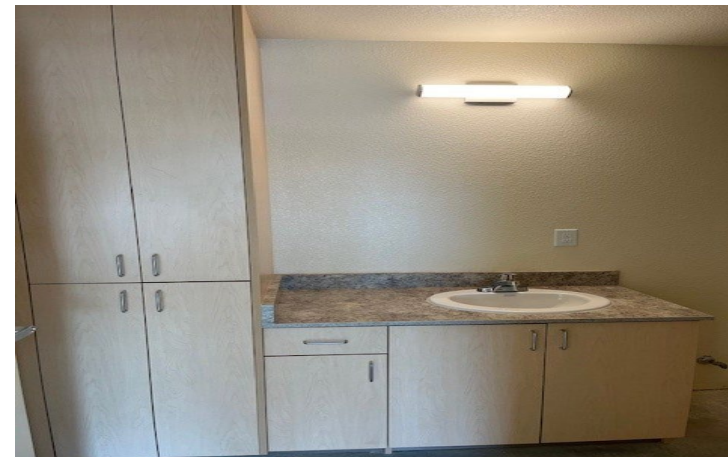
- HHAP AWARD AMOUNT: \$1,638,885
- TOTAL PROJECT COST: \$3,749,917
- AWARDEE:
- Stanislaus County Affordable Housing Corporation

PROJECT DESCRIPTION: Six (6) newly constructed units and one (1) renovated unit (1,752 sq. ft.)

PROJECT PARTNERS: Stanislaus County Behavioral Health & Services (\$1,600,000 No Place Like Home Funding) and City of Modesto (\$450,000 CDBG-CV Funding)

EXPECTED COMPLETION DATE: September 2024

835 CALIFORNIA AVE. PROJECT



CSOC HHAP FUNDED PROJECTS

Permanent Supportive Youth Housing Project

1208 9th Street, Modesto

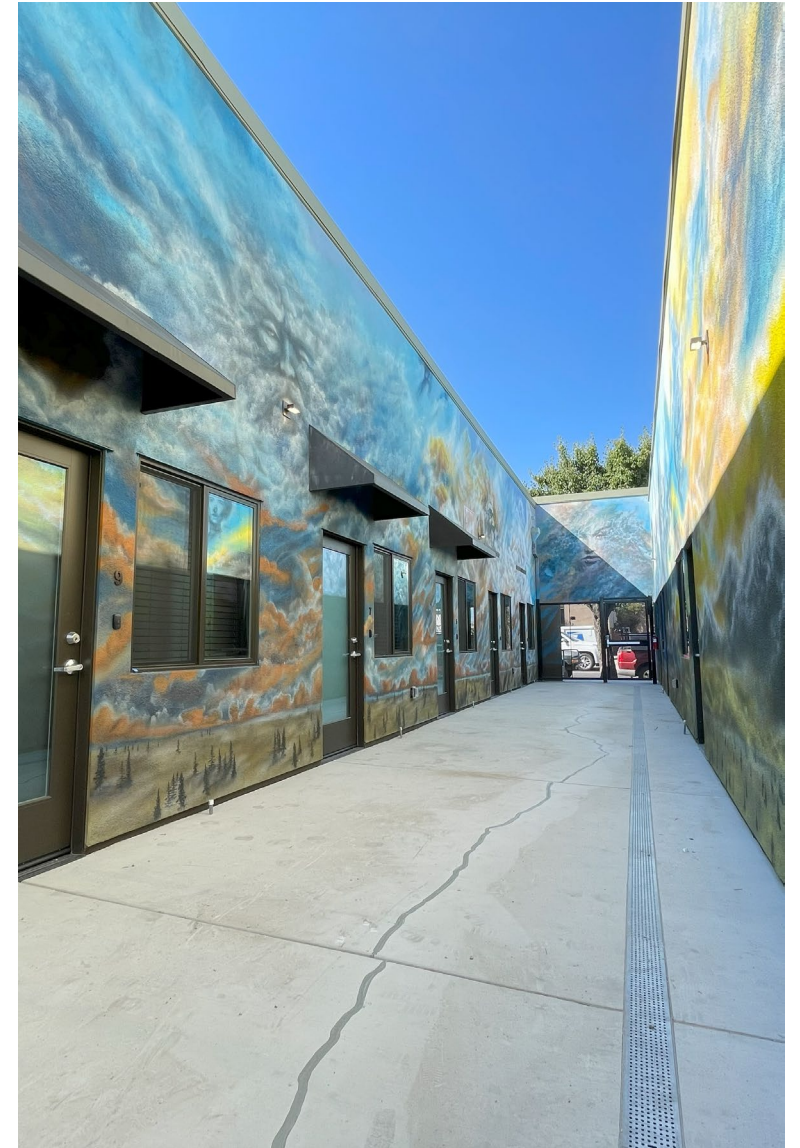
- HHAP AWARD AMOUNT: \$919,264
- TOTAL PROJECT COST: \$5,419,264
- AWARDEE: Center for Human Services

PROJECT DESCRIPTION: Operational funds given to CHS to complete the project and have the 14 unit supportive youth housing project furnished.

PROJECT PARTNERS: California Dept. of Housing and Community Development (\$4,000,000 Project Homekey Funding); City of Modesto (\$500,000 Permanent Local Housing Allocation Match Funding).

OCCUPANCY DATE: Project became fully operational in September 2023

1208 9TH STREET PROJECT



CSOC HHAP FUNDED PROJECTS

Youth Navigation Center
Contract Services

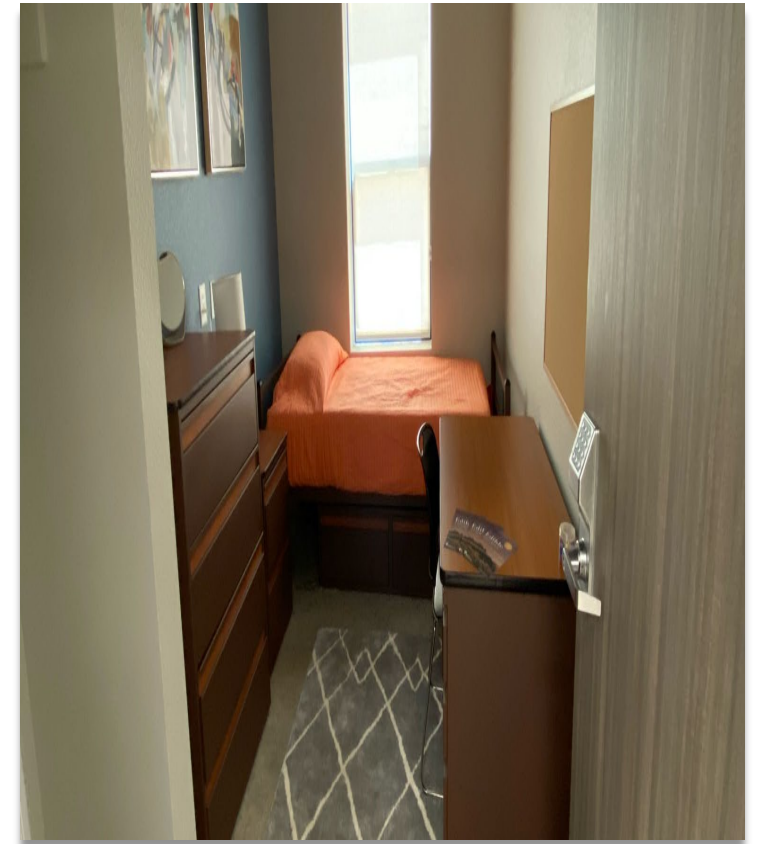
3 Year Award:\$554,546

2008 W. Briggsmore Ave.,
Modesto

- **AWARDEE:** Center for Human Services (CHS)

- **DESCRIPTION OF SERVICES:** Within the Youth Navigation Center, CHS provides 24 low barrier shelter beds for youth 18 to 24 years of age who are experiencing homelessness or are at risk of homelessness

YOUTH NAVIGATION CENTER



CSOC HHAP FUNDED PROJECTS

Turning Point Community
Programs Housing Assessment
Team (HAT)

912 D Street, Modesto

CONTRACT AMOUNT: \$1,033,769

CONTRACT PERIOD: July 1, 2023 to June 30, 2025

DESCRIPTION OF SERVICES: HAT staff work at the Stanislaus Access Center and they are the first contact for the homeless community who enter the Access Center.

HAT OUTREACH AND ENGAGEMENT



ADDITIONAL HAT SERVICES:

- 1) Identification of client needs and community partner resources;
- 2) Case management; and
- 3) Referral and assistance to connect clients to needed services using a whole-person approach.

CSOC HHAP FUNDED PROJECTS

Stanislaus County Workforce

Development Youth Services

CONTRACT AMOUNT: \$330,391

CONTRACT PERIOD: May 1, 2023 to June 30, 2026

DESCRIPTION OF SERVICES: Workforce Development sub-contracted with Modesto Gospel Mission to serve 17 to 24 year olds experiencing homelessness or at risk of homelessness.

WORKFORCE DEVELOPMENT/MGM YOUTH SERVICES



William Whitehouse
attending the New
Life Graduation.



Gabriel Maldonado
attending class at
Modesto Gospel
Mission.



Anissa Marquez
attending a Christmas
party.

CSOC HHAP FUNDED PROJECTS

Permanent Supportive Housing Project

HHAP AWARD
AMOUNT:\$1,775,077

ESTIMATED TOTAL COST:
\$23,183,351

Traveler's Motel

710 N. 9th Street, Modesto

PROJECT DESCRIPTION: Design, permit and rehabilitate 55 units at the Travelers Motel. 54 units will serve as permanent supportive housing and 1 unit will serve as the on-site manager unit.

PROJECT PARTNERS: California HCD Homekey Program Funding Round 3 (\$15,784,562); CA Advancing and Innovating Medi-Cal Health Plans (Housing and Homelessness Incentive Program \$2,150,000); HOME ARP (\$2,800,000) and HOME (\$673,712).

Estimated Completion Date: January 2025

TRAVELER'S MOTEL PROJECT

In-Progress
Construction



In – Progress
Construction



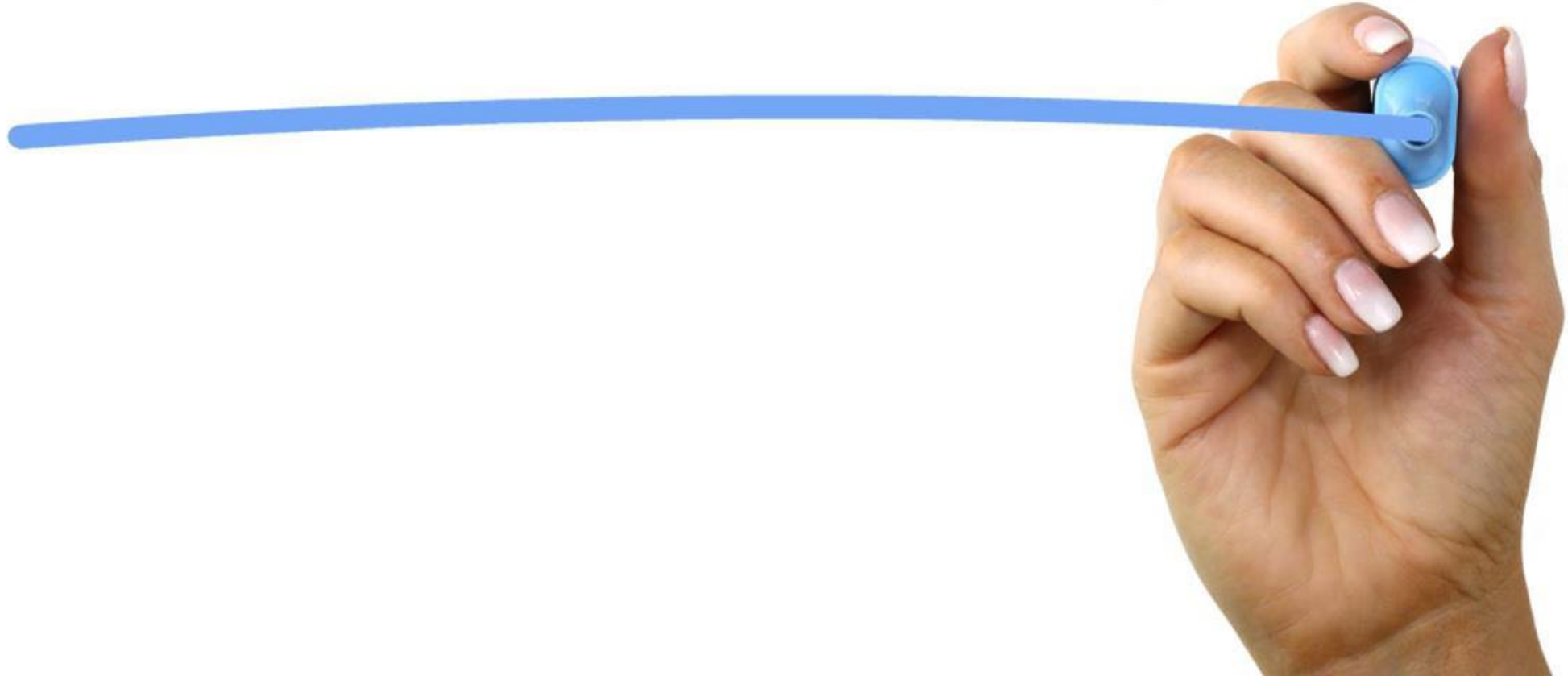
Rendering of
Completed Project



OTHER CSOC HHAP FUNDED ACTIVITIES

| Dedicated Use | Dedicated Amount | Awardee | Project | Contract Period |
|---------------------------|------------------|--------------------------------|--------------------------------------|--------------------------------------|
| Youth Services | \$101,153 | HAVEN | Youth Housing Program Services | 7/1/24-6/30/26 |
| System Support Activities | \$25,000 | Flight Design Co | Homeless Services Mapping Project | 5/1/24-12/31/24 |
| System Support Activities | \$10,000 | Housing and Homeless Workgroup | Housing and Homeless Summit | N/A |
| System Support Activities | \$23,885 | Lived Experience Participants | Stipends | N/A |
| County Administration | \$818,335 | Community Services Agency | CSOC Administrative Staffing Support | 6/01/20 to 6/30/29 (HHAP Rounds 1-5) |

QUESTIONS



Agenda Item IV (c) – Informational Items

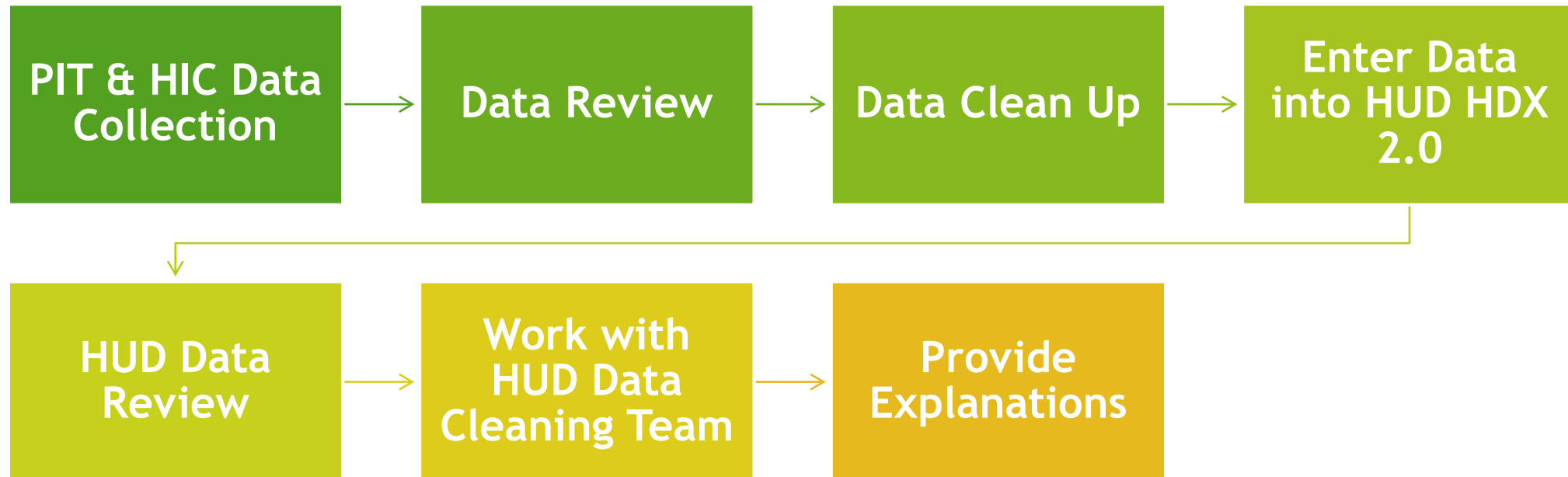
HMIS Point-In-Time (PIT) Count Update

Guest presenter: Lynnell Fuller, Community Services Agency, HMIS Administrator

2024 Point-In-Time Results

Lynnell Fuller, HMIS Administrator
Melissa Lehman, HMIS Data Analyst

The PIT Process



Results Overview

Total Reported: 2052

Total Households: 1828

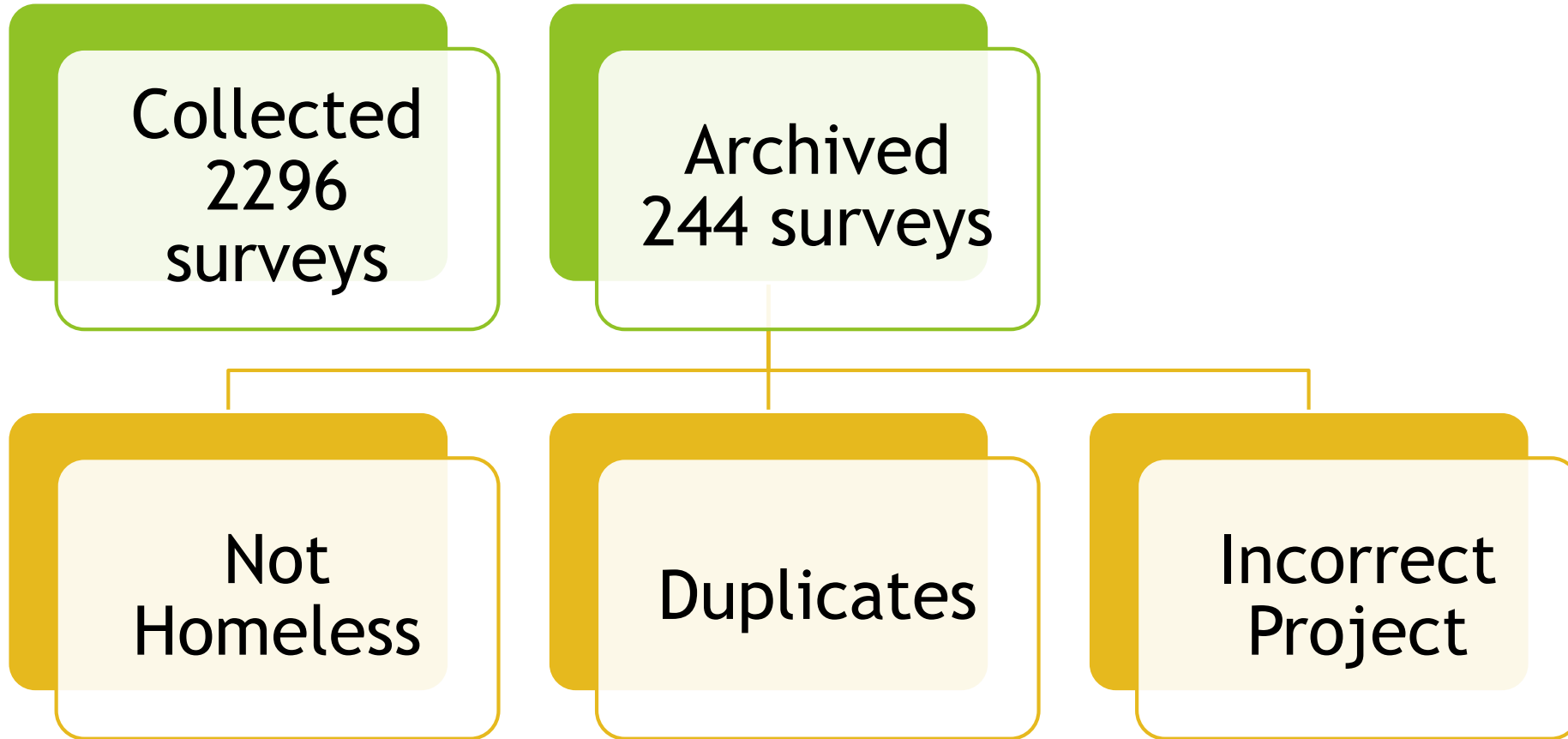
Interviewed: 1668

Observation: 384

Sheltered: 1072

Unsheltered: 980

Total Data Collected



Volunteers

Trained 361 Volunteers

55% Participated
(199 completed surveys)

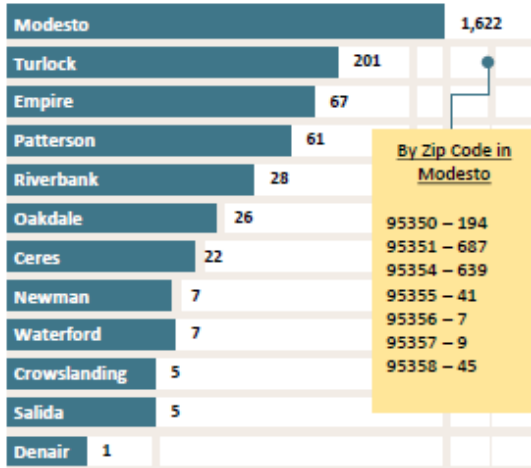
2024 Stanislaus County

Homeless Point-in-Time Count/Executive Summary

Every two years, during the last 10 days of January, the U.S. Department of Housing & Community Development asks communities across the country to conduct a comprehensive count of people experiencing homelessness in order to measure the prevalence of homelessness in each local community. Stanislaus County conducts the count every year.

The 2024 Stanislaus County Point-in-Time (PIT) Count was a community-wide effort conducted on January 24, 2024. Questionnaires were administered to unsheltered and sheltered individuals experiencing homelessness to profile their experience and characteristics. A total of 2,052 people, including children, experienced homelessness in Stanislaus County.

Sheltered/Unsheltered Population by City



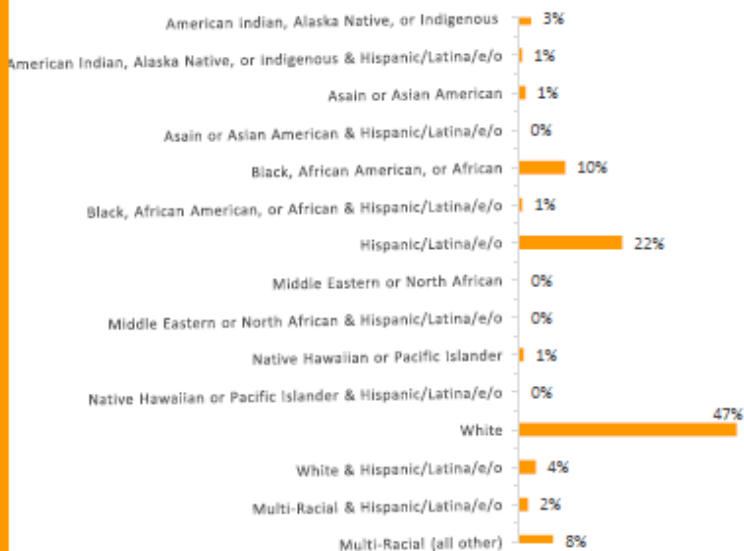
PIT Count Longitudinal Trend



Sheltered/Unsheltered Population



Race/Ethnicity



Age

| | |
|----------|-----|
| Under 18 | 153 |
| 18-24 | 115 |
| 25-34 | 340 |
| 35-44 | 503 |
| 45-54 | 411 |
| 55-64 | 409 |
| Over 64 | 121 |

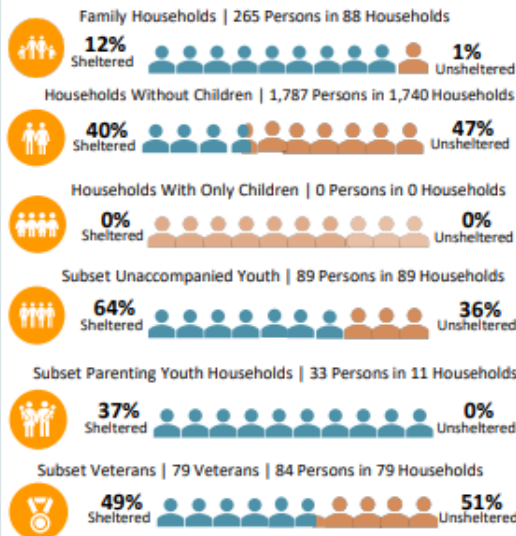
Gender

| | |
|--|-------|
| Woman (Girl) | 721 |
| Man (Boy) | 1,308 |
| Culturally Specific (e.g., Two Spirit) | 0 |
| Transgender | 1 |
| Non-Binary | 10 |
| Questioning | 1 |
| Different Identity | 2 |
| Multiple Genders | 9 |

n=1,516 = Total Number of Adults Interviewed

n=1,476 = Clients Unsheltered and in Emergency Shelter, does not include those in Transitional Housing

Household Breakdown



Reasons for Becoming Homeless

Top 3 Responses



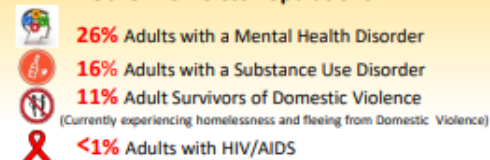
Chronically Homeless Population

n=1,476

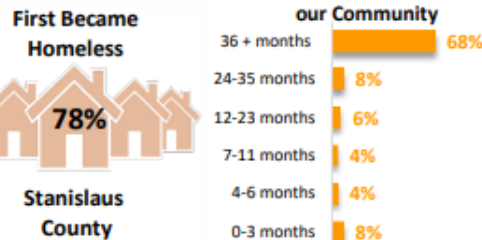
37%
554 Emergency Shelter/Unsheltered



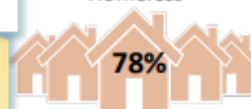
Other Homeless Populations



How Long Homeless in our Community



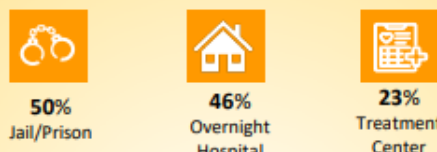
First Became Homeless



Stanislaus County

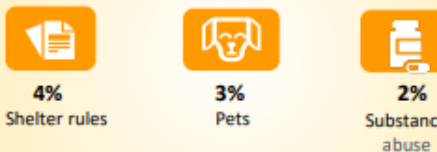
Have Ever Been In....

Top 3 Responses



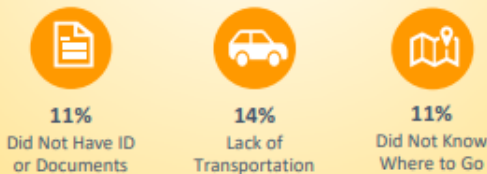
Reasons Declined Shelter Services

Top 3 Responses

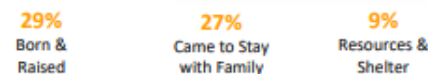


Obstacles Accessing Services

Top 3 Responses

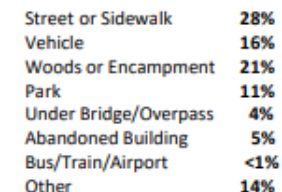


Reasons Came to Community

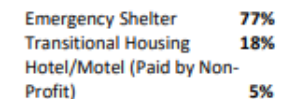


Count of Sleeping Location

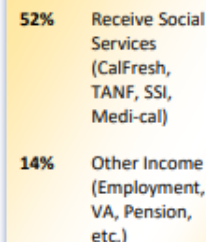
596 Unsheltered



1,072 Sheltered



Income & Benefits



Comparisons

**Veterans
decreased
22%**

**Under 18
decreased
34%**



Agenda Item IV (d) – Informational Items

Kaiser Permanente ECM Update

Guest presenter: Vanessa Davis, Kaiser Permanente

Kaiser Permanente

Kaiser Permanente Medi-Cal: Stanislaus

By Vanessa Davis

Aug 14, 2024

Agenda

- Overview of Kaiser Permanente
- KP Medi-Cal Member Demographics
- ECM/CS and Referral Process
- Kaiser Permanente Helpful Links and Contacts

The Kaiser Permanente Mission



Kaiser Permanente exists to provide high-quality, affordable health care services and to improve the health of our members and the communities we serve.

About Kaiser Permanente

A unique, **integrated** nonprofit provider of health care and coverage

Founded in 1945, Kaiser Permanente is headquartered in Oakland, California, and comprises:

Kaiser Foundation Health Plan, Inc.

A health insurance provider

Kaiser Foundation Hospitals and its subsidiaries

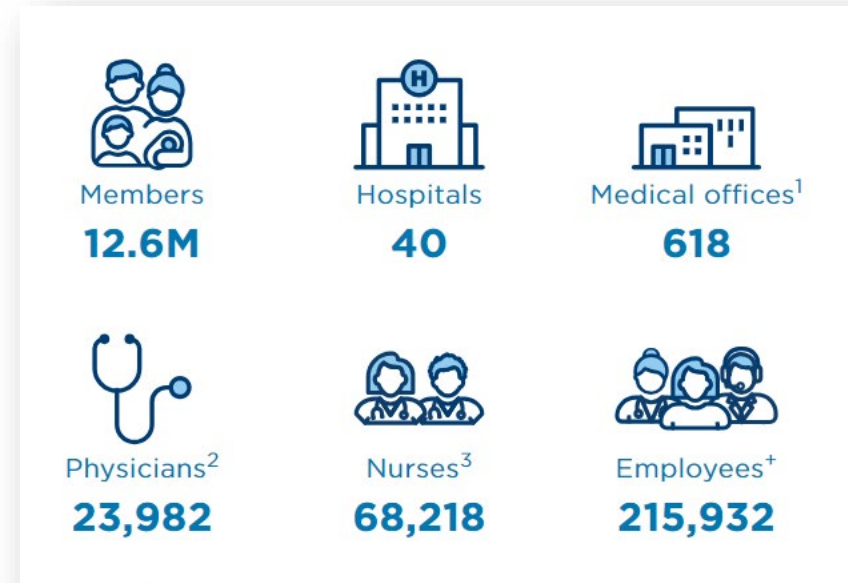
Our hospitals and medical offices

The Permanente Medical Groups

Our physicians

Kaiser Permanente operates in 8 U.S. states and the District of Columbia.

For more information, go to
<https://about.kaiserpermanente.org/who-we-are/fast-facts>



KP National Medicaid and Chip Enrollment **1,364,260**
September 2023

¹ Medical offices and other outpatient facilities as of September 30, 2023.

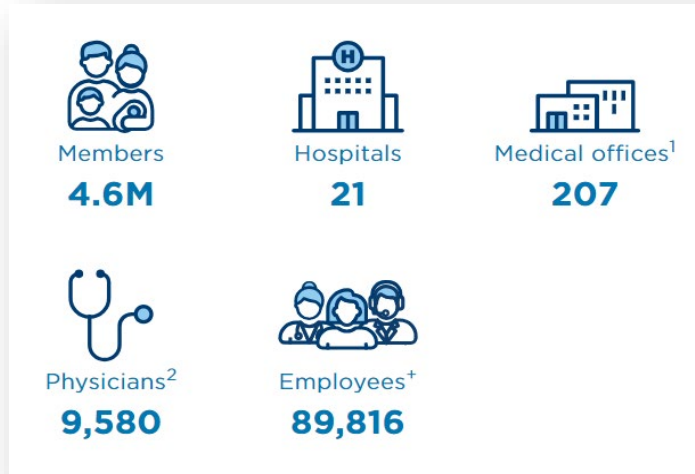
² Approximate as of December 31, 2022, representing all specialties; excluding pool, network, and referral physicians as well as locum tenens.

³ Approximate as of January 31, 2023, representing all specialties.

⁺ Approximate as of September 30, 2023, representing technical, administrative, and clerical employees, nurses, and non-physician caregivers.

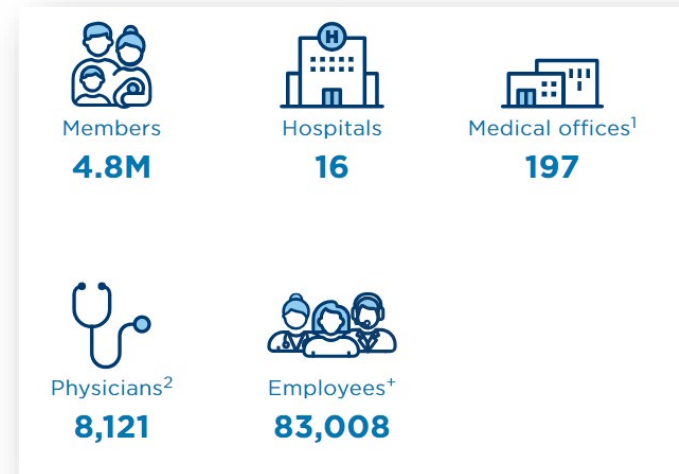
About Kaiser Permanente in California

Northern California Market



Total NCAL Medi-Cal Enrollment: **466,665**
April 2024

Southern California Market



Total SCAL Medi-Cal Enrollment: **635,236**
April 2024

¹ Medical offices and other outpatient facilities as of September 30, 2023.

² Approximate as of December 31, 2022, representing all specialties; excluding pool, network, and referral physicians as well as locum tenens.

³ Approximate as of January 31, 2023, representing all specialties.

⁺ Approximate as of September 30, 2023, representing technical, administrative, and clerical employees, nurses, and non-physician caregivers.

Medi-Cal Direct Contract, effective 1/1/24


- Creates a single, direct contract between the California Department of Health Care Services (DHCS) and Kaiser Foundation Health Plan, Inc. (KFHP),* to provide coverage and care for Medi-Cal enrollees in 32 California counties
 - ✓ Expands KP's Medi-Cal services from 22 to 32 counties
 - ✓ Allows KP to offer Medi-Cal coverage in all areas of the state where it offers commercial health care coverage
 - ✓ Extends access to Kaiser Permanente care, including Specialty care, to non-members in selected areas via community partners and pilot programs

* The direct contract is between DHCS and KFHP. The terms "Kaiser Permanente" and "KP" are used in this presentation to refer to KFHP and affiliated entities, such as The Permanente Medical Groups.

January 17, 2023

Our excellent care extends to everyone

California's Department of Health Care Services rates our Medi-Cal plans highest in the state for quality and equitable care.



Kaiser Permanente has the only Medi-Cal plans in California to surpass the threshold for quality care in more than 90% of the care-delivery measures analyzed.

Kaiser Permanente's Medi-Cal health plans in California are the highest rated in the state for quality care, according to a December 2022 report from the state's Department of Health Care Services. Medi-Cal is California's Medicaid health care program, which covers a variety of medical services for children and adults who have limited income and resources.

To promote better health outcomes and preventive services, the DHCS requires Medi-Cal plans to report annually on a set of quality measures associated with children's preventive services, women's health preventive services, chronic medical conditions, and behavioral health conditions. Kaiser Permanente's Northern and Southern California Medi-Cal health plans were the only plans among more than 2 dozen in the state that achieved established quality levels for more than 90% of the measures.

Kaiser Permanente's Medi-Cal plans are rated highest for quality and equitable care.

<https://about.kaiserpermanente.org/news/our-excellent-care-extends-to-everyone>

Kaiser Permanente Medi-Cal Direct Contract Footprint

Effective 1/1/24, Kaiser Permanente entered a direct Medi-Cal contract in 32 counties in California.

| NORTHERN CALIFORNIA | | SOUTHERN CALIFORNIA |
|--|--|--|
| Existing Direct Contract (no change after 1/1/24) | | |
| Amador El Dorado | Placer Sacramento | San Diego |
| Plan Partner (Medi-Cal enrollees in these counties transitioned to direct coverage with KP, effective 1/1/24) | | |
| Alameda Contra Costa Marin Napa San Francisco San Joaquin | San Mateo Santa Clara Solano Sonoma Yolo | Kern Los Angeles Orange Riverside San Bernadino Ventura |
| New to KP Medi-Cal* (KP will accept new enrollees in these counties after 1/1/24) | | |
| Fresno Kings Madera Mariposa | Santa Cruz Sutter Stanislaus Tulare** Yuba | Imperial Tulare** |



*New Medi-Cal County under Direct Contract – expansion counties meet current KP Commercial footprint.

**Tulare Northern CA: 93618, 93631, 93646, 93654, 93666, 93673; Tulare Southern CA: 93238, 93261.

Eligibility for Medi-Cal Enrollment into Kaiser Permanente

The following populations are eligible to join KP's Medi-Cal managed care plan effective 1/1/2024:

- Those who have had KP coverage within the past 12 months
- Those who are qualified family linkages of existing KP members
- Those who are foster youth and former foster youth
- Those who are duals, covered by both Medicare and Medi-Cal

Additional growth may occur through auto assignment for beneficiaries who do not select a health plan. KP will participate in auto assignment through default enrollment, depending on capacity in each county.

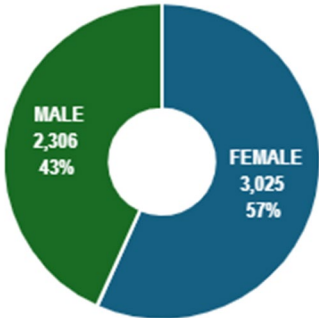
Qualified Family Linkages include:

- A beneficiary's spouse or domestic partner
- A beneficiary's dependent child, foster child, or stepchild under 26 years of age
- A beneficiary's dependent who is disabled and over 21 years of age
- A parent or stepparent of a beneficiary under 26 years of age
- A beneficiary's grandparent, guardian, foster parent, or other relative of a beneficiary under 26 years of age with appropriate documentation of familial relationship.

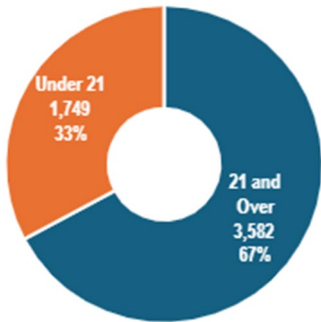
KP Medi-Cal Member Demographics

| Stanislaus County | Membership | County Market Share |
|-------------------|------------|---------------------------|
| | 244,301 | 2.18% of Medi-Cal Members |

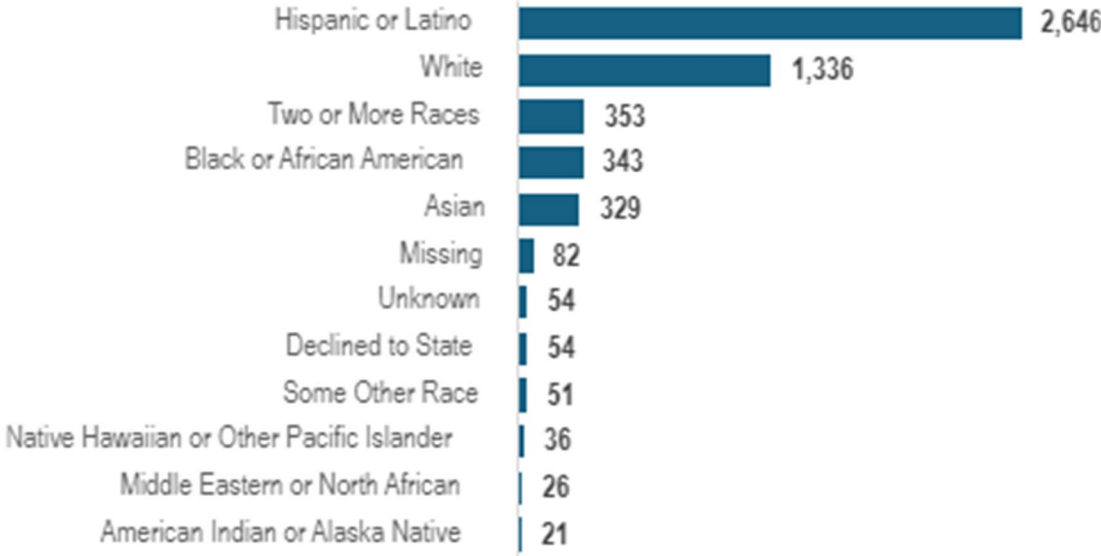
By Gender



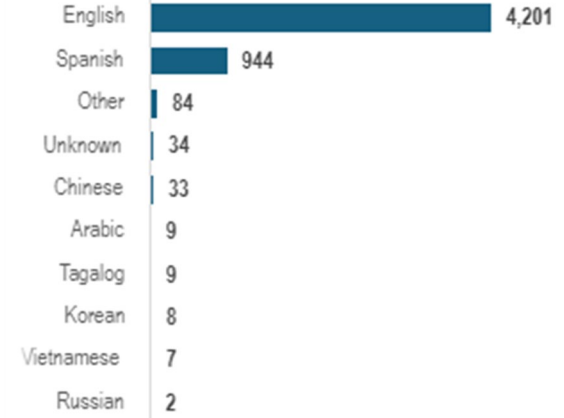
By Age Group



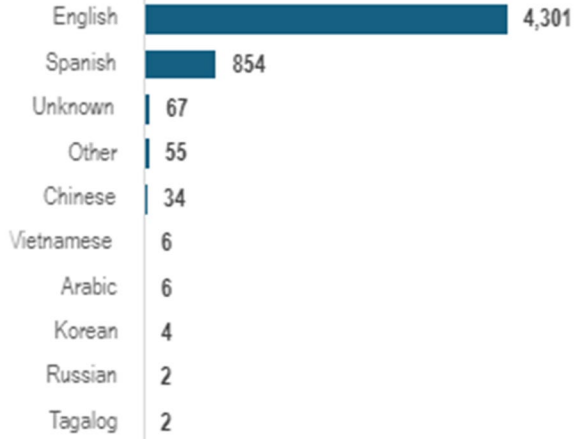
By Race and Ethnicity



By Spoken Language



By Written Language



Data as of June 2024 based on county enrollment unit

Enhanced Care Management and Community Supports

What is CalAIM (Medi-Cal Transformation)



CalAIM (California Advancing and Innovating Medi-Cal) is a multi-year initiative by the California Department of Health Care Services (DHCS) aimed at transforming the Medi-Cal program in California to improve health outcomes and address health disparities among Medi-Cal beneficiaries.

CalAIM has three primary goals:

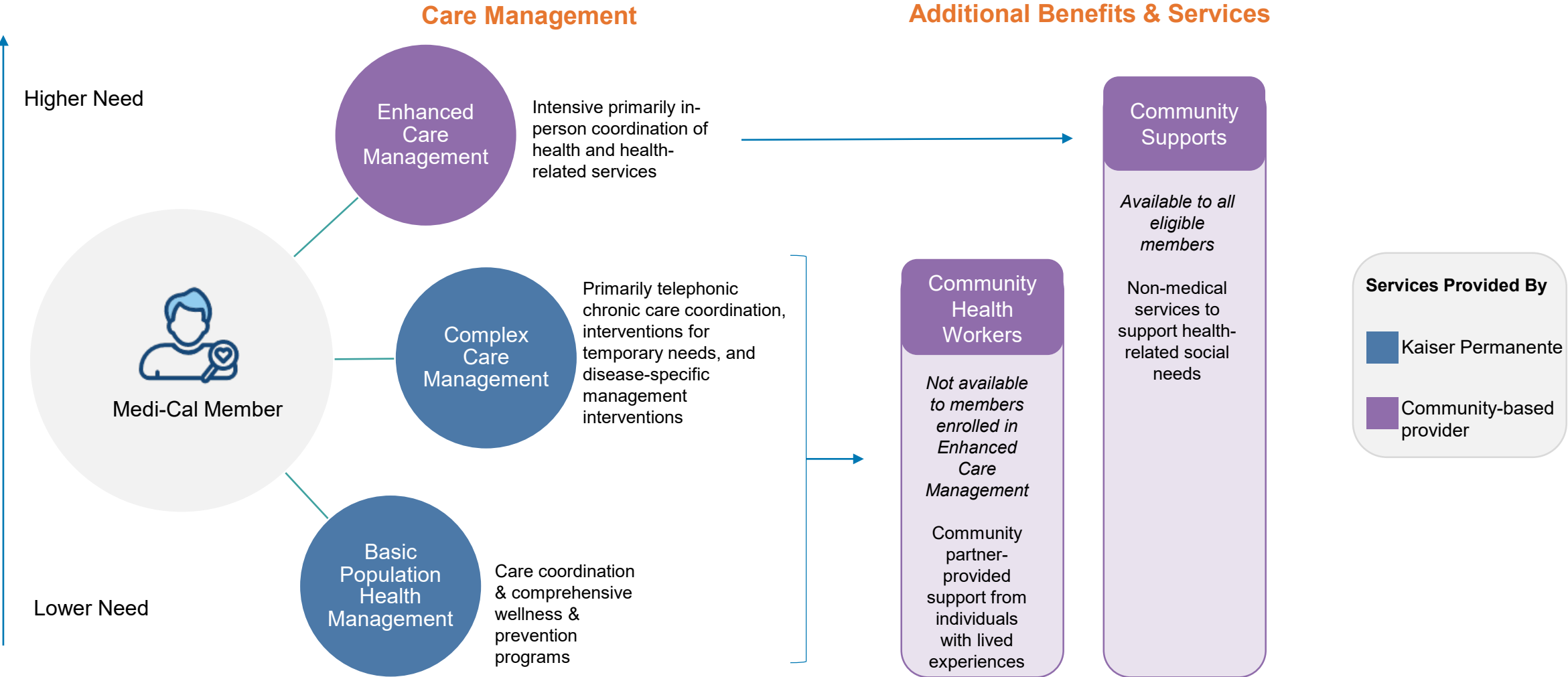
1.1. Identify and manage member risk and need through whole person care approaches and addressing Social Determinants of Health

2. Move Medi-Cal to a more consistent and seamless system by reducing complexity and increasing flexibility

3. Improve quality outcomes and drive delivery system transformation through value-based initiatives, modernization of systems and payment reform

What can members receive?

Based on needs and eligibility, Medi-Cal members receive a variety of services and support including care management and additional services.



What services and benefits are available?



Enhanced Care Management

- Comprehensive Care management that is community-based, interdisciplinary, high-touch, and person-centered



Community Supports

- Non-medical services to support health-related social needs

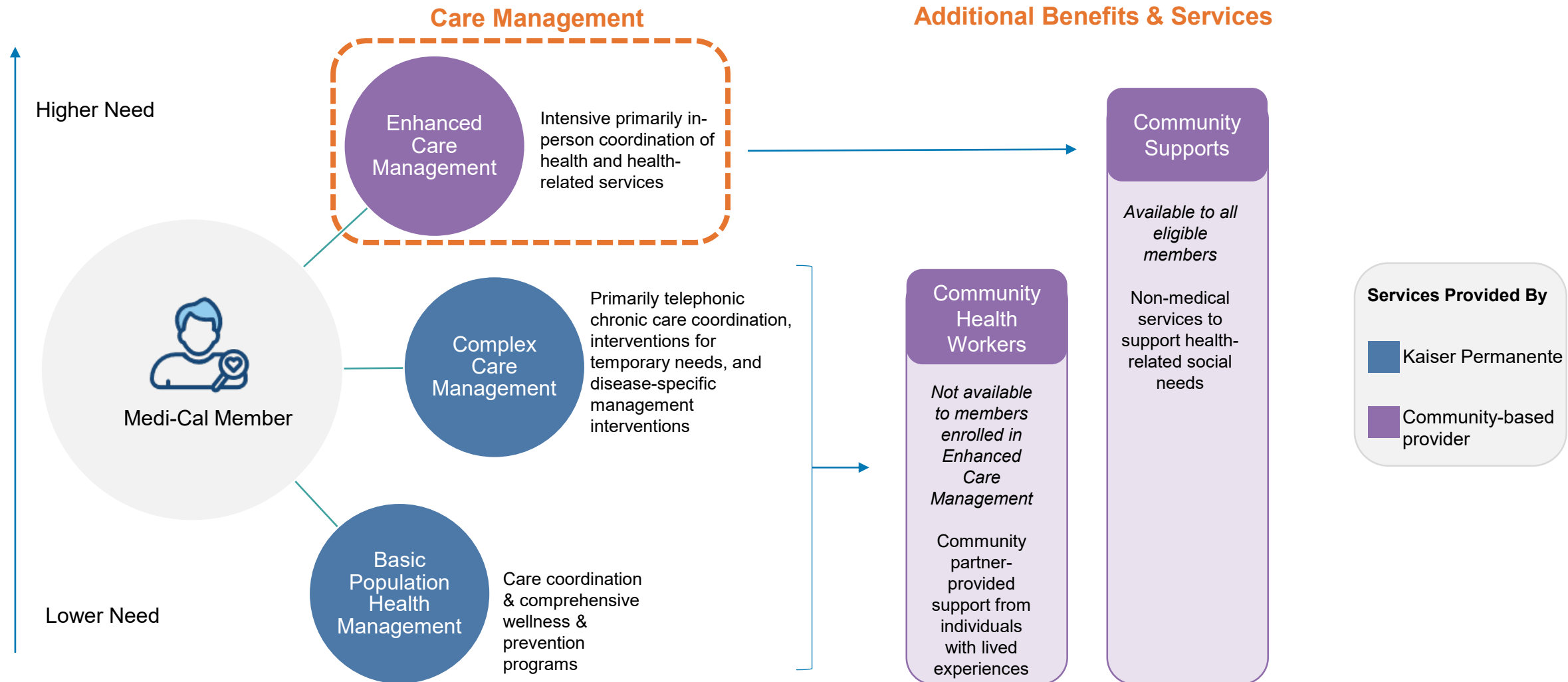


Community Health Workers

- Community partner-provided support from individuals with lived experiences for health promotion, navigation and advocacy

What can members receive?

Based on needs and eligibility, Medi-Cal members receive a variety of services and support including care management and additional services.



What is Enhanced Care Management?

ECM is a Medi-Cal benefit and is a whole-person, interdisciplinary approach to care for members with complex medical and social needs.

ECM addresses both **clinical and non-clinical** needs through systematic coordination of services & **comprehensive care management** that is community based, interdisciplinary, high touch and person centered.



Assigned to a Care Manager



Comprehensive assessment & care management plan



Implement care plan and coordinate with multidisciplinary team



Health promotion/ support to adopt healthy behaviors



Emphasis on face-to-face coordination, including appointment accompaniment



Care transitions/ medication reconciliation




Ensure member and family are informed and engaged



Referring members to resources, including following up to ensure services were rendered

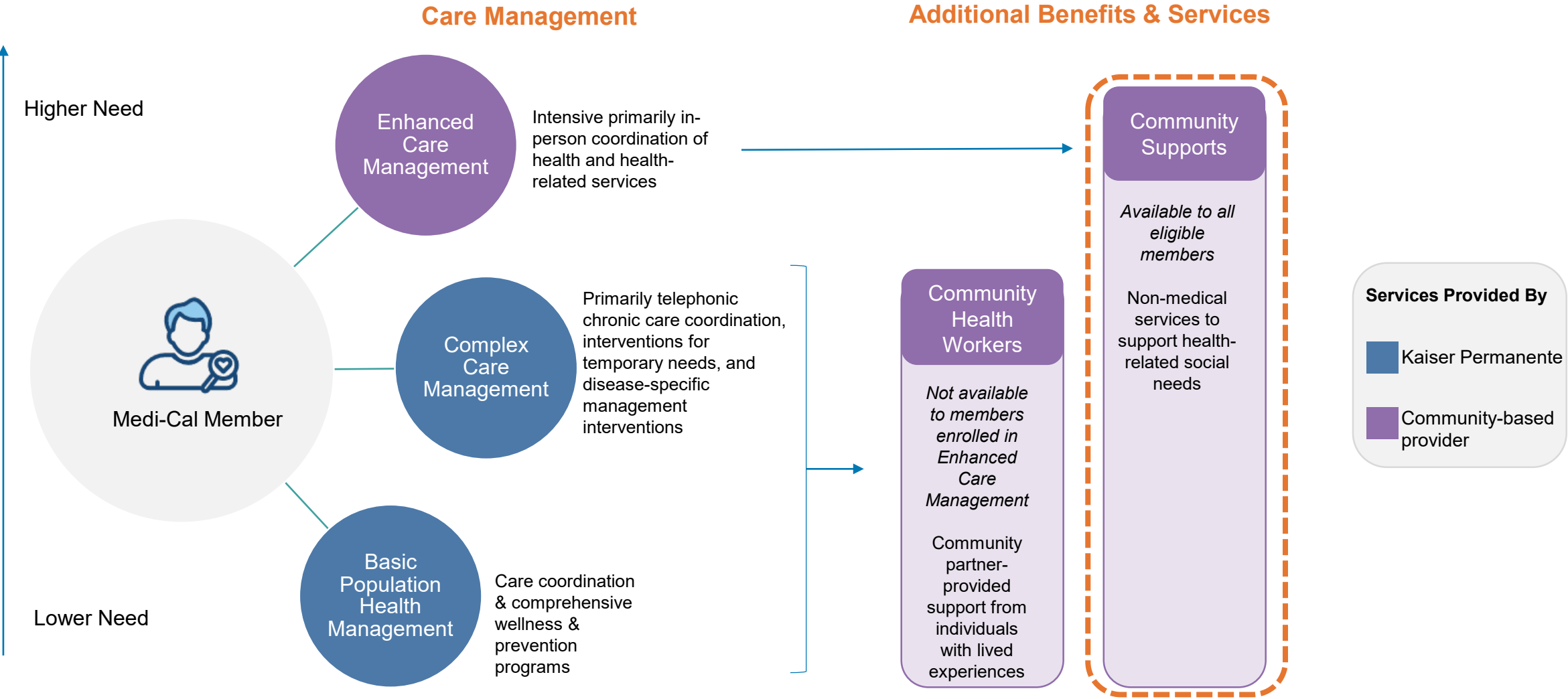
Who is Eligible for Enhanced Care Management?

| “Population of Focus” Categories | | | ADULTS | CHILDREN & YOUTH |
|---|---|---|--------|------------------|
|  | 1 | Individuals or Families Experiencing Homelessness | ✓ | ✓ |
|  | 2 | Individuals At Risk for Avoidable Hospital or ED Utilization (formerly called “High Utilizers”) | ✓ | ✓ |
|  | 3 | Individuals with Serious Mental Health and/or Substance Use Disorder Needs | ✓ | ✓ |
|  | 4 | Individuals Transitioning from Incarceration | ✓ | ✓ |
|  | 5 | Adults Living in the Community and At Risk for LTC Institutionalization | ✓ | n/a |
|  | 6 | Adult Nursing Facility Residents Transitioning to the Community | ✓ | n/a |
|  | 7 | Children and Youth Enrolled in California Children’s Services (CCS) or CCS Whole Child Model (WCM) with Additional Needs Beyond the CCS Condition | n/a | ✓ |
|  | 8 | Children and Youth Involved in Child Welfare | n/a | ✓ |
|  | 9 | Birth Equity | ✓ | ✓ |

Adults are ages ≥21; children & youth are ages <21 except foster youth is up to age 26

What can members receive?

Based on needs and eligibility, Medi-Cal members receive a variety of services and support including care management and additional services.




What are Community Supports?

Community Supports (CS) are non-medical, wrap-around services provided as a substitute or support to avoid other Medi-Cal covered services such as emergency room visits, an avoidable hospital or skilled nursing facility admission, or a discharge delay. As of 1/1/24, most of the counties KP serves offer all 14 of the Community Supports.*

Supports for Housing Insecurity 


Primary Audience: Individuals experiencing homelessness

1. Housing Transition Navigation Services
2. Housing Deposits
3. Housing Tenancy & Sustaining Services
4. Short-Term Post Hospitalization Housing
5. Recuperative Care (Medical Respite)
6. Day Habilitation

Supports to Keep People at Home 


Primary Audience: Individuals at risk for institutionalization in a nursing home

7. (Caregiver) Respite Services
8. Nursing Facility Transition/ Diversion to Assisted Living Facilities
9. Community Transition Services/ Nursing Facility Transition to a Home
10. Personal Care & Homemaker Services
11. Environmental Accessibility Adaptations (Home Modifications)

Supports to Improve a Chronic Condition 

Primary Audience: Individuals who have certain chronic conditions and require support

12. Meals/Medically Tailored Meals
13. Asthma Remediation

Support to Recover from Acute Intoxication 

Primary Audience: Individuals found publicly intoxicated to divert from jail or the Emergency Department

14. Sobering Centers

Note: majority of the referrals for this service are from law enforcement and stays must be less than 24 hours.

*Exceptions include the following CS which are **not** offered in these counties:

- Recuperative Care (San Mateo),
- Sobering Centers (Contra Costa, Marin, Mariposa, Napa, Placer, San Mateo, Santa Cruz, Solano, Sonoma, Sutter, Ventura, Yolo)

Network Lead Entity

Network Lead Entity (NLE) Overview

Kaiser Permanente's Network Lead Entities (NLE) support the development of a community partner network for Enhanced Care Management (ECM), Community Supports (CS), and Community Health Worker (CHW) services in all 32 counties.

Centralized Service Coordination

KP is centralizing the coordination of services through the NLEs. KP retains oversight of eligibility, member notifications, quality, and grievances.



Comprehensive Network Coverage

The expertise and services of three statewide NLEs provide comprehensive coverage and enable timely access to ECM, CS, and CHW services.

Collaboration with Local Community Based Partners

NLEs provide ECM, CS, CHW services in close collaboration with community-based organizations with geographic and population of focus expertise.

Who are the NLEs, and what is their expertise?



| | | | |
|--------------------------|---|--|--|
| Geographic Footprint | <ul style="list-style-type: none"> All 32 counties | <ul style="list-style-type: none"> All 32 counties | <ul style="list-style-type: none"> SCAL Region |
| Areas of Expertise | <ul style="list-style-type: none"> Children Youth Young adults Families | <ul style="list-style-type: none"> Adults Home and Community-Based Services Care Coordination | <ul style="list-style-type: none"> High needs members |
| Services Provided for KP | <ul style="list-style-type: none"> ECM PoFs CHW services | <ul style="list-style-type: none"> ECM PoFs All 14 CS services CHW Services | <ul style="list-style-type: none"> ECM PoFs CS Services: Personal Care and Homemaker Services and Respite Services |

How a community-based organization can serve KP members

KP is working with three Network Lead Entities (NLEs) to develop a network of community-based ECM, CS, and CHW providers.

If your organization wishes to become part of an NLE's network, you may send an email message to:



network@fullcirclehn.org

Phone number: 888-749-8877

Full Circle Health Network meets with prospective providers each week on Thursdays from 12-1pm PST
<https://us06web.zoom.us/j/86507421534>



ILSCAProviderRelations@ilshealth.com

Phone number: 305-262-1292



*

Hubinfo@picf.org

Phone number: 818-837-3775

In your email, please specify the services your organization provides, geography serviced, and population expertise.

*Partners in Care only serves the Southern California region at this time.

How to Submit a Referral for ECM or Community Supports

KP has a no-wrong-door approach for referrals

- Referrals are accepted from any source (members, providers, family, community organizations, etc.)
- Referrals may be placed via email or via phone.



Area

All Northern California Counties
(including Stanislaus)

All Southern California Counties



Phone

1-833-721-6012 (TTY 711)
Monday-Friday (closed major holidays)
8:30 a.m. to 5:00 p.m.

1-866-551-9619 (TTY 711)
Monday-Friday (closed major holidays)
8:30 a.m. to 5:00 p.m.



Email

Send completed [referral form](#) to
REGMCDURNS-KPNC@kp.org with the
subject line “ECM Referral” or “CS Referral” or
“CHW services request”

Send completed [referral form](#) to
RegCareCoordCaseMgmt@kp.org with the
subject line “ECM Referral” or “CS Referral” or
“CHW services request”

* Note: Four counties have a shared referral process: Los Angeles, Sacramento, Stanislaus, San Diego

Transportation Services for KP Medi-Cal Members

Medi-Cal members can get help with non-medical transportation to and from medical appointments.



Transportation services are available for ...

- ✓ KP Medi-Cal members, who have no other way to get to their medical appointment or service
- ✓ Those who are able to get in and out of a vehicle without assistance from the driver



Transportation services available to...

- ✓ Go to a doctor appointment
- ✓ Get medical services such as lab work or X-rays
- ✓ Pick up medicine that can't be sent by mail
- ✓ Pick up medical supplies or equipment



To request non-medical transportation services in San Bernadino County ...

- ✓ Members should call at least three days before an appointment
- ✓ Rides are available Monday through Friday, 5 a.m. to 7 p.m.
- ✓ For urgent needs, such as a hospital discharge, call for a ride 24 hours a day, 7 days a week.

To schedule a ride, Medi-Cal members may call KP Transportation Services at **1-844-299-6230**.

Additional Transportation Services for KP Medi-Cal Members

For members needing wheelchair van services, gurney van services, or other special transportation (Non-Emergency Medical Transportation)



- For Medi-Cal members with medical, mental, and/or physical conditions that make transport by ordinary means impossible, or when the member requires specialized safety equipment that is not normally available in passenger cars, taxicabs, or other forms of public transportation.
- A physician must indicate medical necessity.
- Once clinical criteria are met, the provider submits the request to the KP Ambulance HUB. Within 48 hours, the HUB updates the database with member information.
- Once authorization has been added to the HUB database, members can independently schedule subsequent trips by calling (833) 226-6760.



Important Contact Information



DHCS/Health Care Options : **1-800-430-4263** (TTY **1-800-430-7077**)
Monday - Friday, 8 a.m. to 6 p.m.



For more information or assistance in enrolling in KP Medi-Cal, please call:

Kaiser Permanente Medicaid Assistance Center
1-800-557-4515 1-800-557-4515 (TTY 711)
Monday - Friday, 8 a.m. to 5 p.m.

Helpful Links and Contacts

| KP Medi-Cal Resources | |
|---|---|
| KP Medi-Cal Resource Center: | Resource Center Link |
| KP 2024 Medi-Cal Direct Contract: | KP.org/Medi-Cal2024 |
| KP Designated Medi-Cal Call Center: | 1-855-839-7613 Call to speak to a live Medi-Cal trained agent |
| KP Medi-Cal Programs (ECM, CS, CHW): | For current information, go to our website: Link |
| KP Medi-Cal Continuity of Care: | For current information, go to our website: Link |
| KP Self-Service Community Resource Directory: | KP.org/communityresources 1-800-443-6328 Toll-free number to speak with a resource specialist (M-F, 8a-5p local time) |
| KP Community Health Care Program: | Available to California residents without access to other health coverage. For current information, go to our website: Link |
| Medi-Cal Redeterminations Toolkit: | For current information, go to DHCS website: Link |
| Medi-Cal Rx: | 1-800-977-2273 |
| Medi-Cal Dental: | 1-800-322-6384 |
| Medi-Cal External Engagement: | For general CalAIM and ECM/CS inquiries, medi-cal-externalengagement@kp.org |

Helpful Links and Contacts

| Kaiser Permanente- Additional Contacts | |
|--|--|
| County Memorandum of Understanding (MOUs) | Third-Party Entity MOUs: Tiffany.N.Weisberg@kp.org & Emily.M.Daniels@kp.org MOU Implementation Team kpmou_coordinators@kp.org |
| Population Needs Assessment (PNA) | Erica Mahgerefteh, Erica.X.Mahgerefteh@kp.org |
| Housing and Homelessness Incentive Program (HHIP) | Kristin Kane, Kristin.A.Kane@kp.org |
| Justice Involved Strategy | Amy Stevenson, Amy.E.Stevenson@kp.org |
| Community Advisory Committee (CAC) | Inquiries to MediCalCommunity@kp.org |
| Continuity of Care (COC) | Celina Sullivan, Celina.M.Sullivan@kp.org |
| Incentive Payment Program (IPP) | Inquiries to CalAIM-IPP@kp.org |
| School Behavioral Health Incentive Program (SBHIP) | Alexandra Mays, Alexandra.S.Mays@kp.org |

Medi-Cal Contracting & Network Lead Entity (NLE) inquiries

| | |
|---|---|
| NLE Coordinators | inquiries to KP-NLE@kp.org |
| NLE inquiries | Michelle Matlock, Michelle.N.Matlock@kp.org |
| <p>KP is contracting with three NLEs to provide a network of ECM, CS and CHW services across our Medi-Cal footprint. If an organization wishes to become part of a NLE's network, please email and specify the services that your organization provides, geography and population expertise.</p> | <p>Full Circle Health Network (Youth ECM; statewide): network@fullcirclehn.org</p> |
| | <p>Independent Living Systems (ECM, CS, CHW; statewide): ILSCAProviderRelations@ilshealth.com</p> |
| | <p>Partners in Care Foundation (ECM & CS; SCAL only): Hubinfo@picf.org</p> |

APPENDIX

Enhanced Care Management (ECM) Providers in San Joaquin & Stanislaus County

Organizations listed have executed contracts with KP as of **June 30, 2024**.

Other providers are welcomed to apply to join our provider network via the NLEs.

| Provider | Services/Populations of Focus | Phone Number | Counties Served |
|--|--|--------------|-------------------------|
| AAT Home Placement Agency | Adults - living in the community at-risk for LTC Adults - NF residents transitioning to the community | 209-594-5980 | San Joaquin, Stanislaus |
| Agape Village | Children & Youth - Individuals Experiencing Homelessness Children & Youth - Individuals at-risk for IP and ED Children & Youth - Individuals with SMI/SUD Children & Youth - Individuals transitioning from incarceration Children & Youth - Enrolled in California Children's Services (CCS) or WCM w/needs Children & Youth - Involved in Child Welfare Children & Youth - Pregnant and Postpartum Individuals at-risk for Adverse Perinatal | 209-824-5365 | San Joaquin |
| Alternative Family Services | TBA | 510-835-2641 | San Joaquin |
| CityServ | TBA | 661-558-4441 | San Joaquin, Stanislaus |
| EA Family Services <i>[Birth Equity Specialty Provider Type]</i> | Adults - Individuals Experiencing Homelessness Adults - Individuals at-risk for IP and ED Adults - Individuals transitioning from incarceration (Adult) Adults -Pregnant and Postpartum Individuals at-risk for Adverse Perinatal Children & Youth - Individuals Experiencing Homelessness Children & Youth - Individuals at-risk for IP and ED Children & Youth - Individuals transitioning from incarceration Children & Youth - Involved in Child Welfare | 530-283-3330 | San Joaquin, Stanislaus |
| Independent Living Systems | Adults - Individuals Experiencing Homelessness Adults - Individuals at-risk for IP and ED Adults - Individuals with SMI/SUD Adults - living in the community at-risk for LTC Adults - NF residents transitioning to the community Adults - Individuals with Intellectual or Developmental Disabilities Adults -Pregnant and Postpartum Individuals at-risk for Adverse Perinatal Children & Youth - Individuals Experiencing Homelessness Children & Youth - Individuals at-risk for IP and ED Children & Youth - Individuals with SMI/SUD Children & Youth - Enrolled in California Children's Services (CCS) or WCM w/needs Children & Youth - Involved in Child Welfare Children & Youth - Individuals with Intellectual or Developmental Disabilities (I/DD) Children & Youth - Pregnant and Postpartum Individuals at-risk for Adverse Perinatal | 844-320-5182 | San Joaquin, Stanislaus |



Enhanced Care Management (ECM) Providers in San Joaquin & Stanislaus County

Organizations listed have executed contracts with KP as of **June 30, 2024**.

Other providers are welcomed to apply to join our provider network via the NLEs.



Providers with blue text are newly added

| Provider | Services/Populations of Focus | Phone Number | Counties Served |
|--|---|--------------|-------------------------|
| J&M Homecare Services, LLC | Adults - Individuals at-risk for IP and ED Adults - living in the community at-risk for LTC Adults - NF residents transitioning to the community | 925-552-6500 | San Joaquin, Stanislaus |
| Koinonia Foster Homes, Inc. | Children & Youth - Individuals Experiencing Homelessness Children & Youth - Individuals at-risk for IP and ED Children & Youth - Individuals with SMI/SUD Children & Youth - Individuals transitioning from incarceration | 209-577-3737 | San Joaquin, Stanislaus |
| Lutheran Social Services of No California | Adults - Individuals Experiencing Homelessness | 916-393-1627 | San Joaquin, Stanislaus |
| New Dimensions Foster Family Agency | TBA | 209-526-1837 | San Joaquin, Stanislaus |
| Parents by Choice | Children & Youth - Individuals Experiencing Homelessness Children & Youth - Individuals at-risk for IP and ED Children & Youth - Individuals with SMI/SUD Children & Youth - Individuals transitioning from incarceration Children & Youth - Enrolled in California Children's Services (CCS) or WCM w/needs Children & Youth - Involved in Child Welfare Children & Youth - Individuals with Intellectual or Developmental Disabilities (I/DD) Children & Youth - Pregnant and Postpartum Individuals at-risk for Adverse Perinatal | 209-478-4554 | San Joaquin |
| Resolution Care (dba Vynca Care) | Adults - Individuals Experiencing Homelessness Adults - Individuals at-risk for IP and ED Adults - Individuals with SMI/SUD | 888-227-8884 | San Joaquin, Stanislaus |
| [Birth Equity Specialty Provider Type] | Adults - living in the community at-risk for LTC Adults - NF residents transitioning to the community Adults - Individuals with Intellectual or Developmental Disabilities Adults -Pregnant and Postpartum Individuals at-risk for Adverse Perinatal Children & Youth - Individuals Experiencing Homelessness Children & Youth - Individuals at-risk for IP and ED Children & Youth - Individuals with SMI/SUD Children & Youth - Enrolled in California Children's Services (CCS) or WCM w/needs Children & Youth - Involved in Child Welfare Children & Youth - Individuals with Intellectual or Developmental Disabilities (I/DD) Children & Youth - Pregnant and Postpartum Individuals at-risk for Adverse Perinatal | | |

Enhanced Care Management (ECM) Providers in San Joaquin & Stanislaus County

Organizations listed have executed contracts with KP as of **June 30, 2024**.

Other providers are welcomed to apply to join our provider network via the NLEs.



Providers with blue text are newly added

| Provider | Services/Populations of Focus | Phone Number | Counties Served |
|--|--|--------------|-------------------------|
| Serene Health IPA <i>[Birth Equity Specialty Provider Type]</i> | Adults - Individuals Experiencing Homelessness Adults - Individuals at-risk for IP and ED Adults - Individuals with SMI/SUD Adults - Individuals transitioning from incarceration (Adult) Adults - living in the community at-risk for LTC Adults - NF residents transitioning to the community Adults -Pregnant and Postpartum Individuals at-risk for Adverse Perinatal Children & Youth - Enrolled in California Children's Services (CCS) or WCM w/needs Children & Youth - Involved in Child Welfare Children & Youth - Individuals with Intellectual or Developmental Disabilities (I/DD) Children & Youth - Pregnant and Postpartum Individuals at-risk for Adverse Perinatal | 844-737-3638 | San Joaquin, Stanislaus |
| St. Vincent Preventative Family Care <i>[Birth Equity Specialty Provider Type]</i> | Adults - Individuals Experiencing Homelessness Adults - Individuals at-risk for IP and ED Adults - Individuals with SMI/SUD Adults - Individuals transitioning from incarceration Adults - living in the community at-risk for LTC Adults - NF residents transitioning to the community Adults - Individuals with Intellectual or Developmental Disabilities Adults -Pregnant and Postpartum Individuals at-risk for Adverse Perinatal Children & Youth - Individuals Experiencing Homelessness Children & Youth - Individuals at-risk for IP and ED Children & Youth - Individuals with SMI/SUD Children & Youth - Individuals transitioning from incarceration Children & Youth - Enrolled in California Children's Services (CCS) or WCM w/needs Children & Youth - Involved in Child Welfare Children & Youth - Individuals with Intellectual or Developmental Disabilities (I/DD) Children & Youth - Pregnant and Postpartum Individuals at-risk for Adverse Perinatal | 901-337-3003 | San Joaquin, Stanislaus |

Enhanced Care Management (ECM) Providers in San Joaquin & Stanislaus County

Organizations listed have executed contracts with KP as of **June 30, 2024**.

Other providers are welcomed to apply to join our provider network via the NLEs.

| Provider | Services/Populations of Focus | Phone Number | Counties Served |
|--|--|--------------|-------------------------|
| Star Nursing Inc | Adults - Individuals Experiencing Homelessness Adults - Individuals at-risk for IP and ED Adults - Individuals with SMI/SUD Adults - living in the community at-risk for LTC Adults - NF residents transitioning to the community Children & Youth - Individuals Experiencing Homelessness Children & Youth - Individuals at-risk for IP and ED Children & Youth - Individuals with SMI/SUD | 877-687-7399 | San Joaquin, Stanislaus |
| Victor Community Support Services Inc | Children & Youth - Individuals Experiencing Homelessness Children & Youth - Individuals at-risk for IP and ED Children & Youth - Individuals with SMI/SUD Children & Youth - Individuals transitioning from incarceration Children & Youth - Enrolled in California Children's Services (CCS) or WCM w/needs Children & Youth - Involved in Child Welfare | 844-547-1442 | San Joaquin |



Community Supports (CS) Providers in San Joaquin & Stanislaus County

Organizations listed have executed contracts with KP as of **June 30, 2024**.

Other providers are welcomed to apply to join our provider network via the NLEs.



| Provider | Services/Populations of Focus | Phone Number | County/Counties |
|--|---|----------------|-------------------------|
| 24 Hour Home Care | Personal Care and Homemaker Services | 866-311-6265 | San Joaquin, Stanislaus |
| AAT Home Placement Agency | Housing Transition/Navigation Services Housing Deposits Housing Tenancy & Sustaining Services Nursing Facility Transition/Diversion to Assisted Living Facilities Community Transition Services/Nursing Facility Transition to a Home | 209-594-5980 | San Joaquin, Stanislaus |
| AccentCare of California | Respite Services Personal Care and Homemaker Services | 818-837-3775 | San Joaquin, Stanislaus |
| Aging Assistant LLC | Respite Services Personal Care and Homemaker Services | 916-753-7622 | San Joaquin, Stanislaus |
| Alegrecare, Inc | Personal Care and Homemaker Services | 800-598-4777 | San Joaquin, Stanislaus |
| ASSURED INDEPENDENCE | Home Modifications | 425-516-7400 | San Joaquin, Stanislaus |
| City Serv | TBA | 916-737-5555 | San Joaquin, Stanislaus |
| Comfort Keepers | Respite Services Personal Care and Homemaker Services | (209) 208-4592 | San Joaquin, Stanislaus |
| Community Service Now (formerly Sacramento Covered) | Housing Transition Navigation Services Housing Tenancy and Sustaining Services | (916) 414-8333 | San Joaquin |
| Connect America West | Home Modifications | 707-200-2138 | San Joaquin, Stanislaus |
| EA Family Services | Housing Transition/Navigation Services Housing Deposits Housing Tenancy & Sustaining Services | 530-283-3330 | San Joaquin, Stanislaus |
| Evolve Emod, LLC | Home Modifications Asthma Remediation | 844-438-7577 | San Joaquin, Stanislaus |
| Full Circle Health | Housing Transition/Navigation Services | 208.954.8727 | San Joaquin, Stanislaus |
| Home Safety Services, Inc | Home Modifications | 888-388-3811 | San Joaquin, Stanislaus |
| Independent Living Systems | Housing Transition/Navigation Services Housing Deposits Housing Tenancy & Sustaining Services Nursing Facility Transition/Diversion to Assisted Living Facilities Community Transition Services/Nursing Facility Transition to a Home | 844-320-5182 | San Joaquin, Stanislaus |
| J&M Homecare Services, LLC | Respite Services Personal Care and Homemaker Services | 925-552-6500 | San Joaquin, Stanislaus |

Community Supports (CS) Providers in San Joaquin & Stanislaus County

Organizations listed have executed contracts with KP as of **June 30, 2024**.

Other providers are welcomed to apply to join our provider network via the NLEs.



Providers with blue text are newly added

| Provider | Services/Populations of Focus | Phone Number | County/Counties |
|--|--|--------------|-------------------------|
| Lifeline Systems Company | Home Modifications | 800-451-0525 | San Joaquin, Stanislaus |
| Lutheran Social Services of No California | Housing Transition/Navigation Services Housing Deposits Housing Tenancy & Sustaining Services | 916-543-2900 | San Joaquin, Stanislaus |
| Modesto Gospel Mission, Inc | Recuperative Care Sobering Centers | 209-529-8259 | San Joaquin, Stanislaus |
| Mom's Meals | Meals/Medically Tailored Meals | 877-508-6667 | San Joaquin, Stanislaus |
| Pear Suite, Inc | Housing Transition/Navigation Services Housing Deposits Housing Tenancy & Sustaining Services Asthma Remediation | 628-204-4124 | San Joaquin, Stanislaus |
| Serene Health IPA | Housing Transition/Navigation Services Housing Deposits Housing Tenancy & Sustaining Services Short-Term Post-Hospital Housing Community Transition Services/Nursing Facility Transition to a Home Day Habilitation | 844-737-3638 | San Joaquin, Stanislaus |
| Solano Women in Medicine | Housing Transition/Navigation Services Housing Deposits Housing Tenancy & Sustaining Services Respite Services | 707-277-1677 | San Joaquin, Stanislaus |
| Sonder Community Services | Home Modifications Respite Services Personal Care and Homemaker Services | 916-475-8092 | San Joaquin |
| St. Vincent Preventative Family Care | Housing Transition/Navigation Services Housing Deposits Housing Tenancy & Sustaining Services | 901-337-3003 | San Joaquin, Stanislaus |
| Star Nursing Inc | Housing Transition/Navigation Services Nursing Facility Transition/Diversion to Assisted Living Facilities Community Transition Services/Nursing Facility Transition to a Home Respite Services Personal Care and Homemaker Services | 877-687-7399 | San Joaquin, Stanislaus |
| SUPPORT FOR FAMILY LLC DBA APEX | Respite Services Personal Care and Homemaker Services | 916-924-9111 | San Joaquin, Stanislaus |

Community Supports (CS) Providers in San Joaquin & Stanislaus County

Organizations listed have executed contracts with KP as of **June 30, 2024**.

Other providers are welcomed to apply to join our provider network via the NLEs.

| Provider | Services/Populations of Focus | Phone Number | County/Counties |
|--|--|--------------|-------------------------|
| Uncuffed Project Inc | Recuperative Care | 415-320-8798 | San Joaquin |
| Victor Community Support Services Inc | Housing Transition/Navigation Services | 844-547-1442 | San Joaquin |
| WINETEER INC DBA LIFEWISECHM | Home Modifications | 913-653-0766 | San Joaquin, Stanislaus |



Agenda Item IV (e) – Informational Items

Salvation Army Update

Guest presenter: Major Darren Stratton, Salvation Army City Coordinator, Modesto CA

The Salvation
Army Modesto
Area Command

Berberian
Shelter &
Day Center
Programs

Major Darren S. Stratton
CITY COORDINATOR



The Salvation Army Mission & Ministry



- We are a faith-based organization focused on sharing the gospel of Jesus Christ and meeting human need in Jesus name without discrimination.
- Founded in 1865 in London, England and opened in Modesto, California in 1886.
- The Berberian Shelter opened its doors in 2006 providing material assistance, spiritual care, & emotional support through case management, educational opportunities, housing and employment services.

PROGRAMS OFFERED AT THE BERBERIAN SHELTER

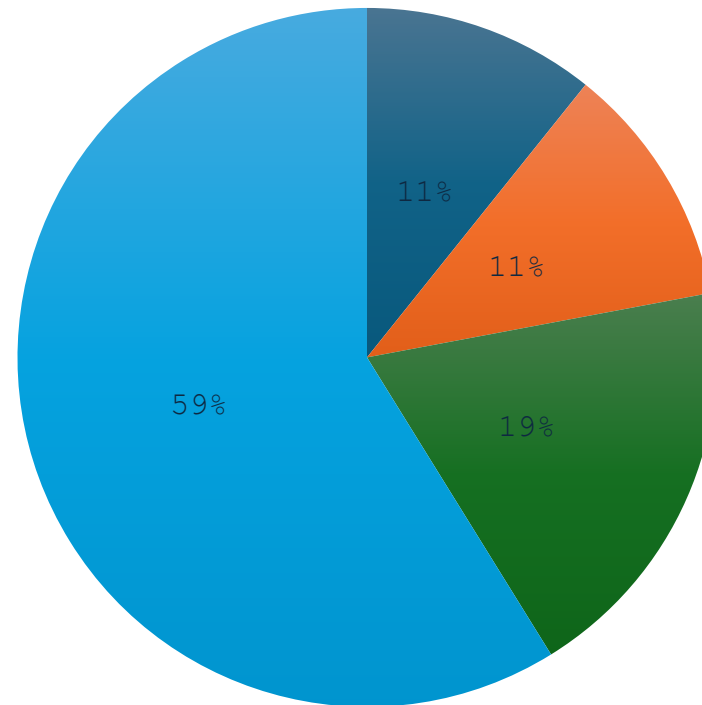


- Emergency Shelter for men and women up to 211 individuals.
- Sheriff's Alternative Program
- Beds for Modesto Police Department
- Case Management & Spiritual Care
- Connectivity with Community Services
- Non-Urgent Medical Transportation
- Day Center including meals, laundry, showers, and case management
- Cooling & Warming Center
- Short Term Post Hospitalization Program

Programmatic Funding



Funding Sources

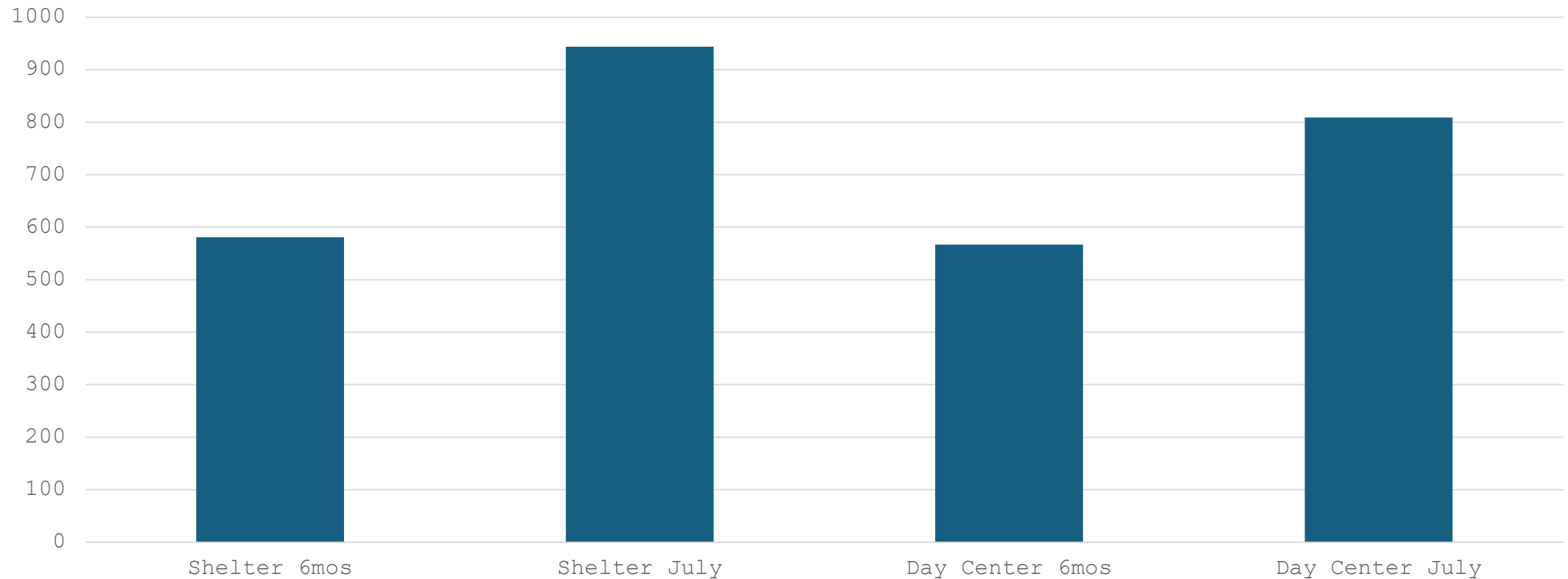


■ Restricted Contributions ■ Gifts In Kind ■ Internal Support ■ Grants (Private & Public)

Berberian Shelter by the Numbers



Persons Served



BERBERIAN CURRENT STRUCTURE



- Our restructuring process was completed June 30th
- Shelter New Admissions from 4-6pm daily
- Shelter Hours 6:00pm – 7:00am nightly
- Day Center Hours 7:00am – 7:00pm daily
- This will permit us to adjust our model based on funding

BERBERIAN INTO THE FUTURE



- Increase admissions into STPHH
- Layer on Additional Community Supports
 - Housing Bundle
 - Day Habitation
 - Enhanced Care Management
- Solidify our Cal-Aims Programs
 - Health Net & Health Plan San Joaquin

CONTACT

Mr. Jim Stokes
Shelter Director

jim.stokes@usw.salvatio
narmy.org
209-522-3209



Agenda Item V – General Membership Announcements





Adjournment

Next Meeting: Wednesday, September 11, 2024

If you have any questions or comments, please contact CSA-SHA_Email@stancounty.com