



Stanislaus Homeless Alliance

A collaborative entity formed to align homelessness services, planning, and funding among stakeholders in Stanislaus County.

Wednesday, January 8, 2025

Agenda

- I. Roll Call – Stanislaus Homeless Alliance Representatives
- II. Public Comment Period
- III. Action Items
- IV. Informational Items
- V. General Membership Announcements
- VI. Adjournment

Agenda Item I – Roll Call

Agency	Primary Voting Member	Alternate Voting Member
City of Ceres	James Casey	Rosalinda Vierra
City of Modesto	David Wright	Joe Lopez
City of Riverbank	Vacant	Marisela Garcia
City of Patterson	Vacant	Carlos Roque
City of Turlock	Cassandra Abrams	Reagan Wilson
City of Oakdale	Christopher Smith	Brian Whitemyer
City of Waterford	Elizabeth Talbott	Mike Pitcock
Community System of Care	Fred Berry	Maryn Pitt
Focus on Prevention	Brad Hawn (Chair)	Tim Byrd
Stanislaus County	Terry Withrow	Jody Hayes
Stanislaus Regional Housing Authority	Carlos Estacio III	Jim Kruse

Agenda Item II – Public Comment Period

*PUBLIC COMMENT: Matters under the jurisdiction of the SHA and not on this posted agenda may be addressed by the general public at this time. However, California law prohibits the SHA from taking any action on a matter that is not on the posted agenda unless it is determined to be an emergency by the SHA. Any member of the public wishing to address the SHA during the “Public Comment” period shall be permitted to be heard once for up to **5** minutes.*

To make a comment please complete a Request to Comment form (available at the entrance to Chambers) and provide it to staff. Speakers will be recognized by the SHA Chairperson and called to the podium to speak in the order of receipt.

Agenda Item III – Action Items

- a. Minutes for December 2024 Meeting
- b. Alternate Member Appointment (Bylaw Recommendation)
- c. Nomination and Approval of SHA Co-Chair for Calendar Year 2025

Agenda Item III(a) – Action Items

Approval of Minutes for December 2024 Meeting

Agenda Item III(b.) – Action Items

Alternate Member Appointment (Bylaw Recommendation)

4.2 Alternate Member Appointments

For each government entity listed in Section 4, alternate members of the Stanislaus Homeless Alliance will ~~be the highest ranking an executive-level~~ administrative official in each government entity.

For each non-government entity listed in Section 4, alternate members will be nominated by the governing bodies of these entities and approved by a majority of that body. Subject to the bylaws of those organizations, non-governmental entities shall prioritize the election of representatives not currently employed by a governmental entity.

Agenda Item III(c.) – Action Items

Nomination and Approval of SHA Co-Chair for Calendar Year 2025

Agenda Item IV – Informational Items

- a. Health Plan of San Joaquin CalAIM Homelessness Initiatives Update
 - i. Enhanced Care Management & Community Supports
 - ii. Housing Projects
 - 1. Stanislaus Regional Housing Authority
 - 2. Stanislaus Equity Partners (STEP)

Agenda Item IV (a) – Informational Items

Health Plan of San Joaquin CalAIM Homelessness Initiatives
Update

Agenda Item IV (a.i.) – Informational Items

Enhanced Care Management & Community Supports

Guest presenter: Lizeth Granados, CEO, Health Plan of San Joaquin/Mountain Valley Health Plan

Health Plan 
of San Joaquin

 Mountain Valley
Health Plan

Health Plan of San Joaquin



Community • Partnership • Wellness

Agenda

- CalAIM Brief Overview – Enhanced Care Management (ECM) and Community Supports (CS)
- Referral Process
- Presumptive Eligibility
- Utilization Data
- Transitional Rent
- Housing Status and HHIP Funding
- Community Re-Investment Opportunities



California Advancing & Innovating Medi-Cal (CalAIM)

- CalAIM is an initiative launched by DHCS to improve the quality of life and health outcomes of Medi-Cal members by implementing broad delivery system, program, and payment reforms across the Medi-Cal program
- As initial benefits and services of CalAIM, Enhanced Care Management offers intensive care coordination services for high need members. Community supports offer supportive services which address social determinants of health which often impact health outcomes



Enhanced Care Management

County	Implementation
San Joaquin	January 2022
Stanislaus	July 2022

ECM Core Services

- Provides care and resources for the highest-need members through intensive coordination of health and health-related services
- Coordination of care for the member through outreach, engagement, assessments and care management planning
- Members will have a dedicated team to coordinate all care

Current State

- ECM network with significant growth
- Provider staffing much improved
- Operational processes improved
- ECM child and youth population effective as of 7/1/2023



Referrals for ECM

May come from multiple sources, such as:

- ECM Providers or Community Support Providers
- Primary Care Providers or Community Based Organizations
- Member Self or Family Referrals
- Hospitals and Facilities

How to Refer Members to ECM :

- **Primary Care Providers or Community Based Organizations-** Please complete the ECM Referral Form and fax it to HPSJ Case Management Department at **209.762.4720**
 - **Member, Family, or Caregiver-** May call HPSJ Customer Service at **888.936.7526**
 - **Hospitals and Facilities:** Request an ECM referral from the assigned HPSJ Concurrent Review nurse or Transition of Care staff.
- **Members must meet specific criteria to be eligible for these services. The ECM Referral Form includes a summary of criteria.**



ECM Referral Process



Link to Adult ECM Referral Form: <https://www.hpsj.com/wp-content/uploads/2024/01/ECM-Adult-Referral-Form.pdf>



Link to Child/Youth ECM Referral Form: <https://www.hpsj.com/wp-content/uploads/2024/01/ECM-Child-Youth-Refferal-Form.pdf>



HPSJ Community Supports

Housing Transition Navigation Services	Nursing Facility Transition/Diversion to Assisted Living Facilities
Housing Deposits	Community Transition Services/Nursing Facility Transition to a Home
Housing Tenancy and Sustaining Services	Personal Care and Homemaker Services
Short-Term Post-Hospitalization Housing	Environmental Accessibility Adaptations(Home Modifications)
Recuperative Care (Medical Respite)	Medically-Supportive Food/Meals/Medically Tailored Meals
Respite Services	Sobering Centers
Day Habilitation Programs	Asthma Remediation



Referrals for Community Supports

May come from multiple sources, such as:

- ECM Providers or Community Support Providers
- Primary Care Providers or Community Based Organizations
- Member Self or Family Referrals
- Hospitals and Facilities
- Concurrent Review nurse, or Transition of Care staff

For Community Support (CSS) Referrals:

- **Community Support Providers:** Information about CSS can be found at: <https://www.hpsj.com/providers/calaim/> For any questions, please call HPSJ Customer Service at **888.936.7526**
- **Primary Care Providers or Community Based Organizations:** Please complete the CSS Referral Form and submit to the CSS provider. Refer to the Health Plans Provider Directory, select "other Provider" and select the Community Support Services check box for a listing of CSS providers. The CSS provider will submit to Health Plan for authorization using the Provider Portal, or fax (Provider Portal preferred)
- **Member, Family, or Caregiver:** May call HPSJ Customer Service at **888.936.7526**
- **Hospitals and Facilities:** May request a Community Support Service through the standard communications with their Health Plan Concurrent Review nurse or Transition of Care staff.

*** Members must meet specific criteria to be eligible for these services.**

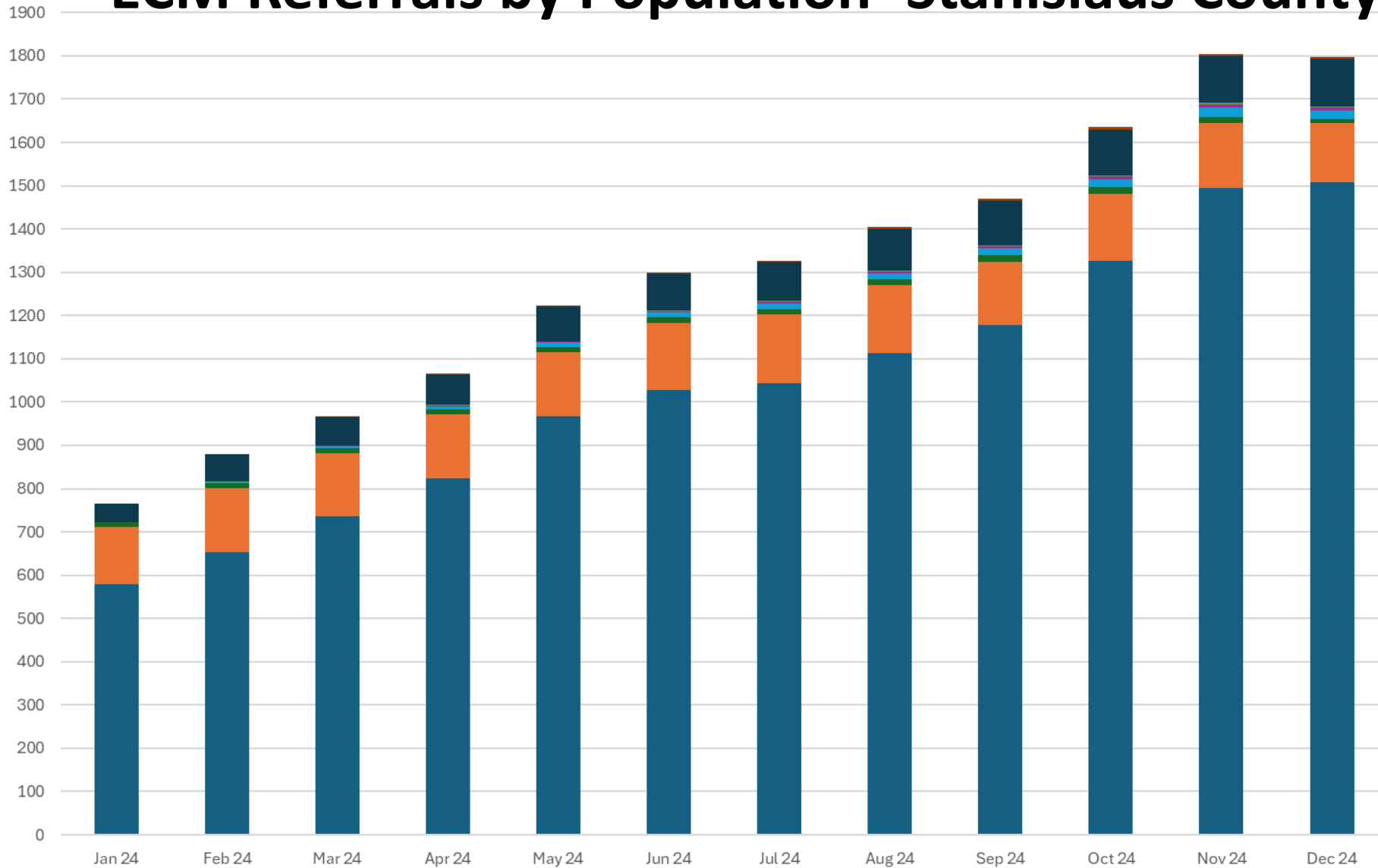


ECM Enhancements / Presumptive Eligibility

- Effective January 1, 2025
 - Health Plan will implement updated ECM Referral Standards as required by DHCS:
 - ECM Authorization information for members approved for ECM will be available to network ECM providers on their Health Plan's portal or similar online system
 - No supplemental documentation for ECM authorization will be required by Health Plan.
- Presumptive Eligibility
 - Health Plan contracted ECM providers can initiate ECM services and will be reimbursed for these services for up to 30 days without an authorization in place
 - ECM services provided from day 31 and beyond will require prior authorization to ensure claims payment



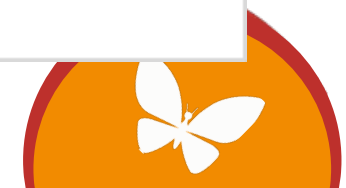
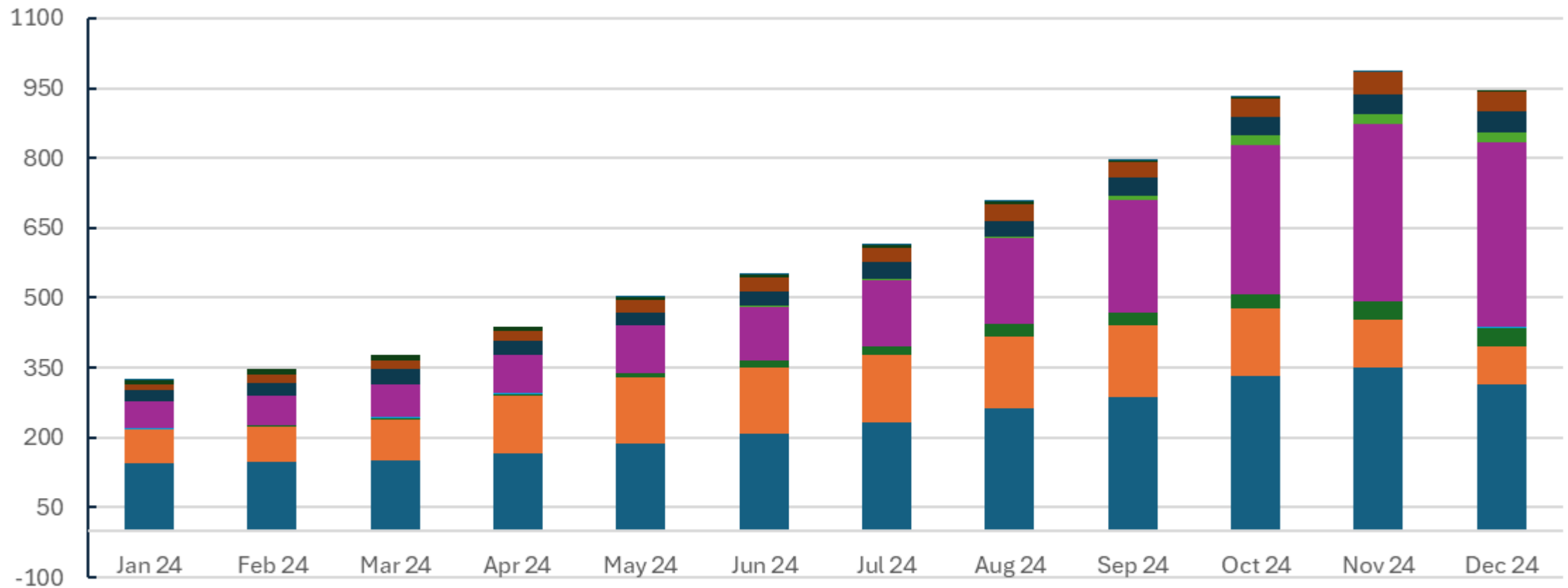
ECM Referrals by Population- Stanislaus County



- Homeless
- LTC
- SMI/SED/Risk of Hospitalization
- High Utilizing
- Birth Equity
- Intellectual or Developmental Disabilities
- CCS with additional needs
- Child Welfare Involved



Community Supports- Stanislaus County



Transitional Rent

- New 15th Community Support mandatory for MCPs to implement
- Members authorized for Transitional Rent will automatically be eligible for ECM
- MCPs will cover up to six months rent for members who are experiencing or at risk of homelessness and meet certain additional eligibility criteria:
 - Meet clinical risk factors such as having one or more serious chronic physical health conditions
 - Meet the access criteria for SMHS, DMC, or DMC-ODS services
 - Other specified transitioning populations (transitioning out of institutional levels of care, correctional facilities, child welfare system)
- Designed to establish a bridge to permanent housing and improve overall health outcomes that have been shown to result from stable housing
- Requires coordination between MCPs, county behavioral health delivery systems and existing housing systems



Housing Status and HHIP Funding

- Health Plan of San Joaquin (HPSJ) successfully participated in the 2-year HHIP Program from January 1, 2022 through December 31, 2023 for both San Joaquin and Stanislaus counties.
- The program officially ended as of 12/31/23, with no further discussion from DHCS to continue efforts.
- The HHIP program was a voluntary incentive program for Managed Care Plans (MCP) to earn incentive funding to address housing insecurity and instability based on specific HHIP measures required by DHCS.
- Funds were pre-released by HPSJ to housing partners through an application and Memorandum of Understanding (MOU) process



Stanislaus County Housing Partners Funded Through HHIP

- Community Services Agency – Point in Time
- Community Services Agency – HMIS Lead Agency
- San Joaquin Health – Street Medicine
- Stanislaus Regional Housing Authority
- Stanislaus Equity Partners (STEP)
- Downtown Streets Inc
- RHCBC Development



Housing Successes – Street Medicine Efforts in Modesto by SJ Health

- Served close to 546 Stanislaus County members between March 2024 – December 2024
- Visited 102 locations in Stanislaus County
- Most encounters were services via the Mobile Clinic



Stanislaus County: Success Story by Street Medicine Team

Patient was referred to Mobile Team by Community Health and Assistance Team (CHAT), who brought patient to Patient Access Center regularly for care.

Patient was seen at least weekly for 4 weeks.

The patient's wound healed but Mobile Health Team continues to follow up with patient and to encourage follow through with the treatment regimen for uncontrolled hypertension.



Community Re-Investment Opportunities

As part of Health Plan's 2023-2026 strategic roadmap to improve health for residents in San Joaquin, Stanislaus, El Dorado and Alpine counties, we announce the launch of our Community Reinvestment Program!

Health Plan aims to transform care delivery, expand provider access, and improve the quality of health care in our communities. Some of our initial programs include:

- HIE (Health Information Exchange) Grants Incentive Program
- Community Health Worker Training and Certification Program
- Community Health Worker Recruitment Workforce

Health Plan looks forward to partnering with providers, clinics, hospitals, community -based organizations, and Medi-Cal members to improve community health while furthering Health Plan's mission and vision. Long-time and new partners are invited to learn more and apply for a grant at [Community Reinvestment - Health Plan of San Joaquin \(hpsj.com\)](https://www.hpsj.com).



Health Plan CalAIM Resources

CALAIM WEBPAGE

Referral forms and more information is available on our website under the CalAIM section.

REFERRALS

Download Adult ECM Referral Form

Download Child ECM Referral Form

CS-Referral-Form.pdf
(hpsj.com)

AUTHORIZATIONS

To submit an authorization request, visit our [online portal](#). Authorization form also available at Forms & Documents for HPSJ Providers

QUESTIONS

Questions?
Contact
HPSJ/MVHP
Case
Management
Dept.
@ 209-942-
6352



HPSJ Resources

Link: [ECM Provider Toolkit](#)

Link: [Community Supports Explainer](#)

Link: [ECM Policy Guide](#) (ECM Population of Focus Criteria)

Link: [Community Supports Policy Guide](#) (Community Supports Criteria)

Link: [Health Plan of San Joaquin Website \(hpsj.com\)](#) (HPSJ Website)



Agenda Item IV (a.ii.) – Informational Items

Housing Projects

Agenda Item IV (a.ii.1.) – Informational Items

Stanislaus Regional Housing Authority

Guest Presenter: Jim Kruse, Executive Director, Stanislaus Regional Housing Authority



Stanislaus Regional Housing Authority

ALPINE | AMADOR | CALAVERAS | INYO | MARIPOSA
MONO | STANISLAUS | TUOLUMNE COUNTIES

“PEOPLE HOUSING PEOPLE”

Housing and Homeless Incentive Program (HHIP) Funding provided to Stanislaus Regional Housing Authority Development Projects



Housing and Homeless Incentive Program - HHIP

HEALTH PLAN OF SAN JOAQUIN

- \$1,680,000 – CENTRAL VALLEY HOMES
- \$175,000 - KESTREL RIDGE
- \$2,300,000 – WALKER

HEALTH NET

- \$720,000 – CENTRAL VALLEY HOMES
- \$75,000 – KESTREL RIDGE

Central Valley Homes

Modesto and Turlock

38 UNITS COMPLETED AUGUST 2024

18 BHRS UNITS, 7 VETERANS UNITS, 11 SENIOR UNITS, 1 MANAGERS UNIT, 1 AFFORDABLE UNIT

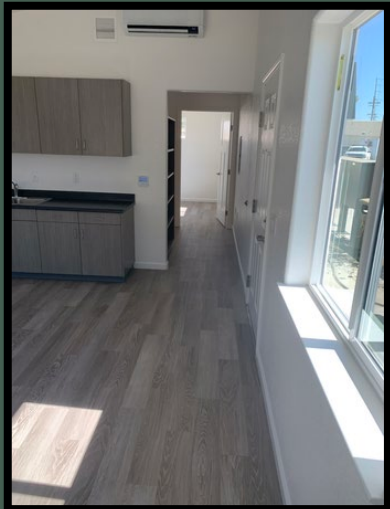


Central Valley Homes

Modesto and Turlock

38 UNITS COMPLETED AUGUST 2024

18 BHRS UNITS, 7 VETERANS UNITS, 11 SENIOR UNITS, 1 MANAGERS UNIT, 1 AFFORDABLE UNIT



Kestrel Ridge

Modesto

COMPLETED 2024

8 BHRS UNITS

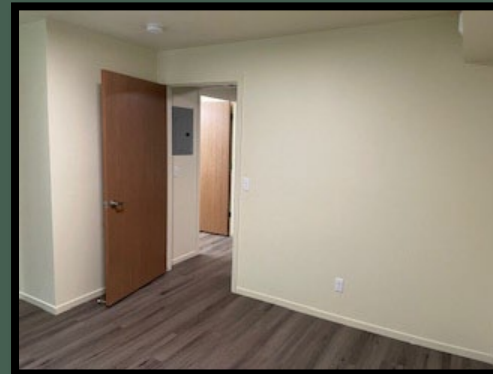


Walker Point

Hughson

COMPLETED 2024

20 BHRS UNITS



Agenda Item IV (a.ii.2.) – Informational Items

Stanislaus Equity Partners STEP

Guest Presenter: Jessica Fibrun, President/Chief Executive Officer, Stanislaus Equity Partners, Inc.

STANISLAUS EQUITY PARTNERS



ABOUT STEP

VISION

Develop Thriving Communities

MISSION

We Mobilize Communities, Partnerships and Investments through Housing, Small Business Services and Affordable Lending to Promote the Well Being of All Residents.



CONVENOR
PARTNER
ADVOCATE

ATTAINABLE HOUSING

Community Value

Creative Housing Starts & Solutions

Mission

Develop partnerships and capital to increase attainable housing inventory and resources in Stanislaus County.



HEALTH PLAN OF SAN JOAQUIN

MISSION

Provide high quality healthcare for members through community partnerships.

VISION

Healthy communities through equitable access to quality care.

VALUES

- Accountability
- Diversity. Equity. Inclusion
- Partnerships
- Stewardship
- Excellence
- Teamwork



● **The Village @ Free Will Baptist**

225 E. Orangeburg Ave. Modesto, CA

- Permanent Supportive Housing
- ELI Families At Risk of Homelessness
- 9 Units
 - 6 - 400sf - 2 bed/1 bath
 - 2 - 600sf - 4 bed/1 bath
 - 1 - 800sf - 4 bed/2 bath
- Funding:
 - Health Plan of San Joaquin
 - Health Net
 - STEP
- Property Manager: StanCo
- Service Providers:
 - Center For Human Services
 - Modesto Family Promise
- Owner: Free Will Baptist Church

● **Hope Village - The Bridge Covenant**

2201 Morrill Ave. Riverbank, CA

- Permanent Supportive Housing
- ELI Single Mothers and Children
- 8 Units
 - 6 - 400sf - 2 bed/1 bath
 - 1 - 600sf - 4 bed/1 bath
 - 1 - 800sf - 4 bed/2 bath
- Funding
 - Health Plan of San Joaquin
 - Health Net
 - STEP
 - City of Riverbank
- Property Manager: StanCo
- Service Provider: Center For Human Services
- Owner: STEP

● SITE RETAINED MODEL

The Village @ Free Will Baptist

- **Total Project Cost:** \$1,725,000.00
- **Cost per Unit:** \$179,000.00
- **STEP**
 - \$258,000.00
 - Stanislaus County invested funds
- **Funding:**
 - Health Plan of San Joaquin
 - Health Net
 - Stanislaus County
 - STEP
 - City of Modesto - Fee Waivers
- **Site Owner Partner:** Deferred TA Fees
- **Increase of Equity Value:** \$1,725,000.00 + Revenue

● PROPERTY DONATION MODEL

Hope Village - The Bridge Covenant

- **Total Project Cost:** \$1,825,000.00
- **Approx. Cost per Unit:** \$179,000.00 + Site Costs
- **STEP**
 - \$150,000.00
 - Stanislaus County invested funds
- **Funding**
 - Health Plan of San Joaquin
 - Health Net
 - STEP
 - City of Riverbank - PHLA Funds + Fee Waivers
- **Site Owner (Donated Property):** STEP

● **Revolving Acquisition Fund**

- Access to Capital
- Gap Financing

● **Faith Based Housing Projects**

- Mission Aligned
- Free (or cheap) Land
- Income Generation

● **Manufacturing Facility**

- Inventory Production
- Workforce Training
- Regional Partnerships

● **Land Trust**

- Shovel Ready Projects





THANK YOU!

Agenda Item V – General Membership Announcements





Adjournment

Next Meeting: Wednesday, February 12, 2025

If you have any questions or comments, please contact CSA-SHA_Email@stancounty.com