



# Stanislaus Homeless Alliance

*A collaborative entity formed to align homelessness services, planning, and funding among stakeholders in Stanislaus County.*

Wednesday, March 12, 2025

# Agenda

- I. Roll Call – Stanislaus Homeless Alliance Representatives
- II. Public Comment Period
- III. Action Items
- IV. Informational Items
- V. General Membership Announcements
- VI. Adjournment

# Agenda Item I – Roll Call

Agency	Primary Voting Member	Alternate Voting Member
City of Ceres	Rosalinda Vierra	Mayor Javier Lopez
City of Modesto	David Wright	Nick Bavaro
City of Oakdale	Christopher Smith	Bryan Whitemyer
City of Patterson	Gabriella Hernandez	Kendra Mora
City of Riverbank	Stacy Call	Marisela Garcia
City of Turlock	Cassandra Abram	Kevin Bixel
City of Waterford	Elizabeth Talbott (Co-Chair)	Christine Harris
Community System of Care	Fred Berry	Maryn Pitt
Focus on Prevention	Brad Hawn (Chair)	Tim Byrd
Stanislaus County	Terry Withrow	Jody Hayes
Stanislaus Regional Housing Authority	Carlos Estacio III	Jim Kruse

# Agenda Item II – Public Comment Period

*PUBLIC COMMENT: Matters under the jurisdiction of the SHA and not on this posted agenda may be addressed by the general public at this time. However, California law prohibits the SHA from taking any action on a matter that is not on the posted agenda unless it is determined to be an emergency by the SHA. Any member of the public wishing to address the SHA during the “Public Comment” period shall be permitted to be heard once for up to **5** minutes.*

To make a comment please complete a Request to Comment form (available at the entrance to Chambers) and provide it to staff. Speakers will be recognized by the SHA Chairperson and called to the podium to speak in the order of receipt.

# Agenda Item III – Action Items

- a. February 2025 Minutes

## Agenda Item III(a.) – Action Items

Approval of Minutes for February 2025 Meeting

# Agenda Item IV – Informational Items

- a. Shelter Services Update
  - i. Garden Gate Respite
  - ii. Modesto Gospel Mission
  - iii. Salvation Army
  - iv. Turlock Gospel Mission

# Agenda Item IV (a.) – Informational Items

Shelter Services Update

# Agenda Item IV (a.i.) – Informational Items

## Garden Gate Respite

*Guest presenter:* Chaz Whitsell, Program Director I, Turning Point Community Programs



# Garden Gate Respite

---

Providing trauma-informed peer support and short-term shelter in a homelike setting



# Garden Gate Respite Client Criteria

---

- Short-term Crisis Shelter (Avg length of stay 2-3 days)
- For individuals that are experiencing a known or suspected mental illness
- For residents of Stanislaus County
- For individuals 18 years or older
- For individuals that are experiencing or at risk of experiencing homelessness, victimization, psychiatric hospitalization, and/or arrest.

No medical or clinical staff on site, clients at Garden Gate Respite have a level of self care to remain safe at shelter, including ambulation, dispensing their own medications, and utilizing shower and restroom facilities without staff assistance.





## Referral Criteria

---

Clients can be referred via two means:

- 1. Case Management** (Outreach and Mental Health) - The referring case manager and Respite staff will work together to develop a short-term plan, with regular updates between both parties.
- 2. Stanislaus County Police Departments** - Officer will refer individuals they suspect to have a mental illness for an overnight stay. GGR staff will schedule meeting with outreach to offer and schedule assessment the following day and will provide any other linkages necessary.



## Amenities

---

- Offers a home-like environment
- Currently have 5 bedrooms and 11 beds
- Dinner prepared each evening, with fresh and frozen options for clients to prepare their own breakfast and lunch
- Access to tv and wireless internet
- Staff to provide laundry services.



## Staff

---

All staff at Garden Gate Respite are Peers, who aim to connect with clients on a shared experience level, and a focus on identifying and building client strengths and resilience, using their previous lived experience to validate clients.

All staff will also provide linkages to other community resources to assist client in meeting their own identified needs.



# Questions?



TURNING POINT  
COMMUNITY PROGRAMS  
A Path to Mental Health

# Agenda Item IV (a.ii.) – Informational Items

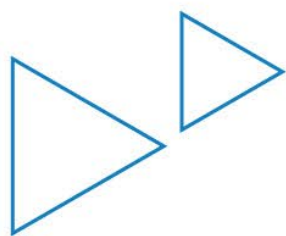
Modesto Gospel Mission

*Guest presenter: Jim Conway, Director, Modesto Gospel Mission*



# TRANSFORM A LIFE TODAY

The Modesto Gospel Mission has been a community staple and resource for over 75 years.





# What It Takes



**KITCHEN**

**500+**  
Daily Served



**SHELTER**

**110+**  
Daily Served



**MEN'S  
PROGRAM**

**60**  
Daily Served



**WOMEN'S  
PROGRAM**

**25**  
Daily Served



**DAY CENTER**

**50**  
Daily Served



**YOUTH  
CENTER**

**50**  
Daily Served



# A New Shelter For Women And Children

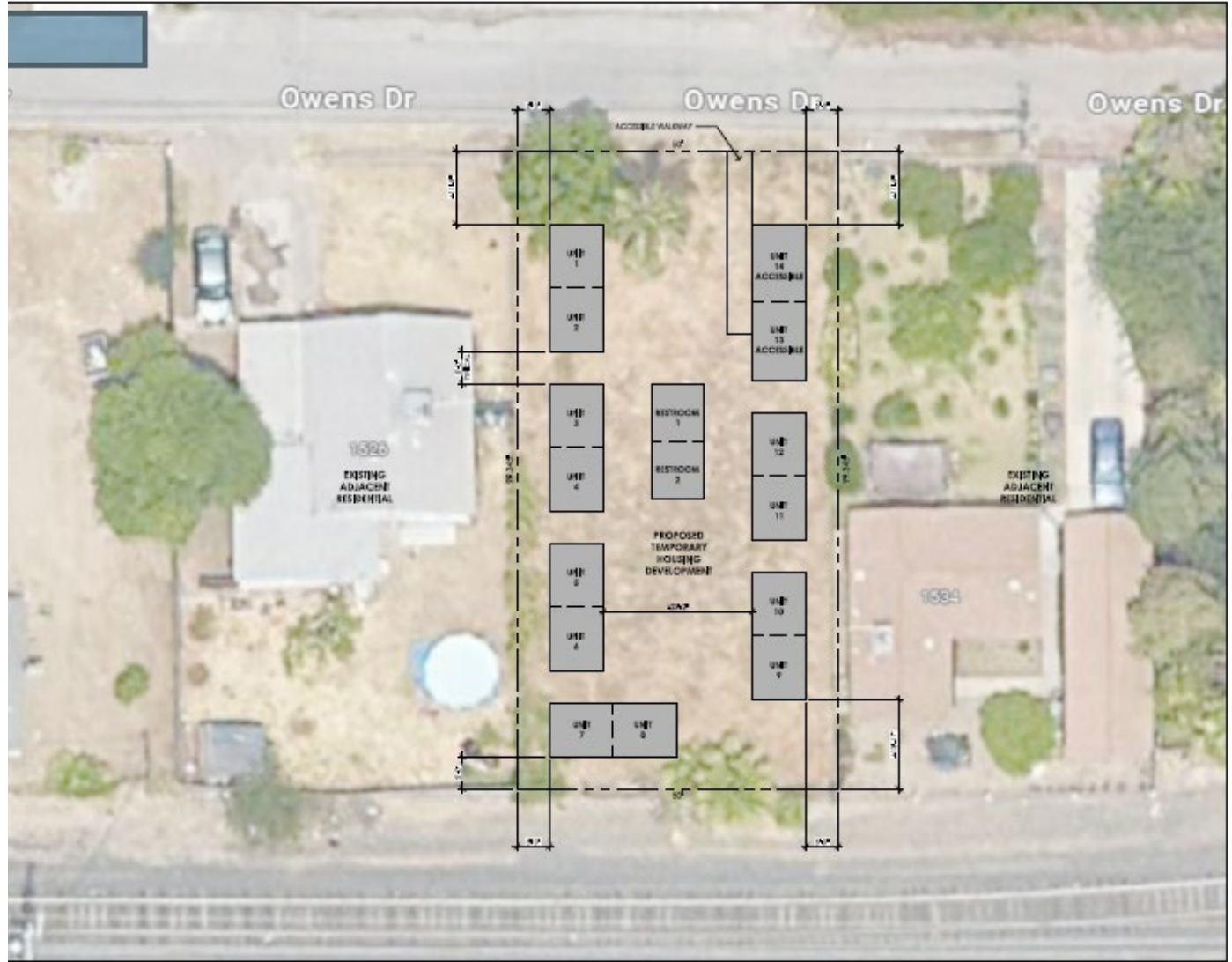


HOPE *For*  
MODESTO



hopeformodesto.org

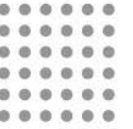




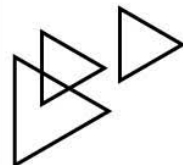
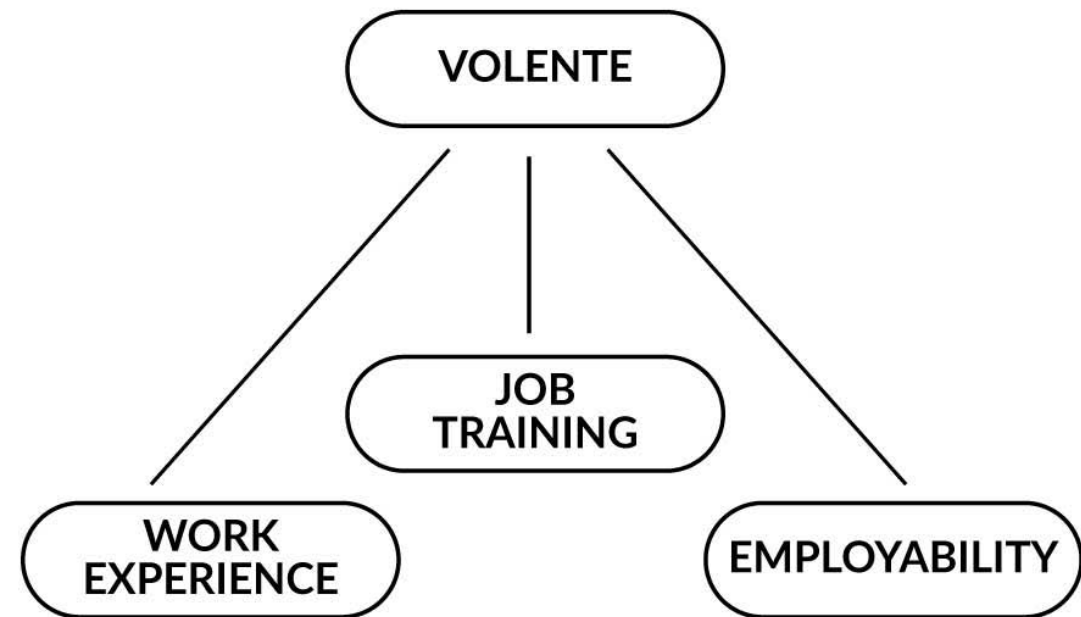


Stanislaus Regional Housing Authority  
ALPINE | AMADOR | CALAVERAS | INYO | MARIPOSA  
| MONO | STANISLAUS | TUOLUMNE COUNTIES  
"People Housing People"

# Coffee with a Mission



Volente Coffee Roasters is a social enterprise of the Modesto Gospel Mission.



**VOLENTE™**  
COFFEE ROASTERS  
[www.volentecoffee.com](http://www.volentecoffee.com)



[www.mymission.org](http://www.mymission.org)  
[www.hopeformodesto.org](http://www.hopeformodesto.org)

# Agenda Item IV (a.iii.) – Informational Items

Salvation Army

*Guest presenter:* Jim Stokes, Shelter Director, Salvation Army Berberian Shelter,  
Access Center Emergency Shelter

# Agenda Item IV (d.iv.) – Informational Items

## Turlock Gospel Mission

*Guest presenter:* Thomas Hall, Director of Emergency Services and Outreach,  
Turlock Gospel Mission



Hope Lives Here



Thomas Hall  
Director of Emergency Services & Outreach



## Services Provided in 2024

Bed Stays

18,281

Meals

95,337

Housed

14

Served 1,536 unduplicated guests



# Programs and Services

1

Emergency Services

2

Job Readiness Program

3

Nourish Restoration Program

4

Food Services



# Emergency Services

Available to anyone experiencing homelessness



Shelter beds (80)



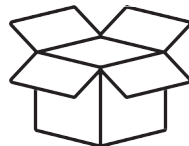
Meals



Community Health Workers



Referrals



Storage Bins



Clothing



Pet Food/Kennels



Hygiene



Extreme Weather Shelter

# Low-Barrier Shelter

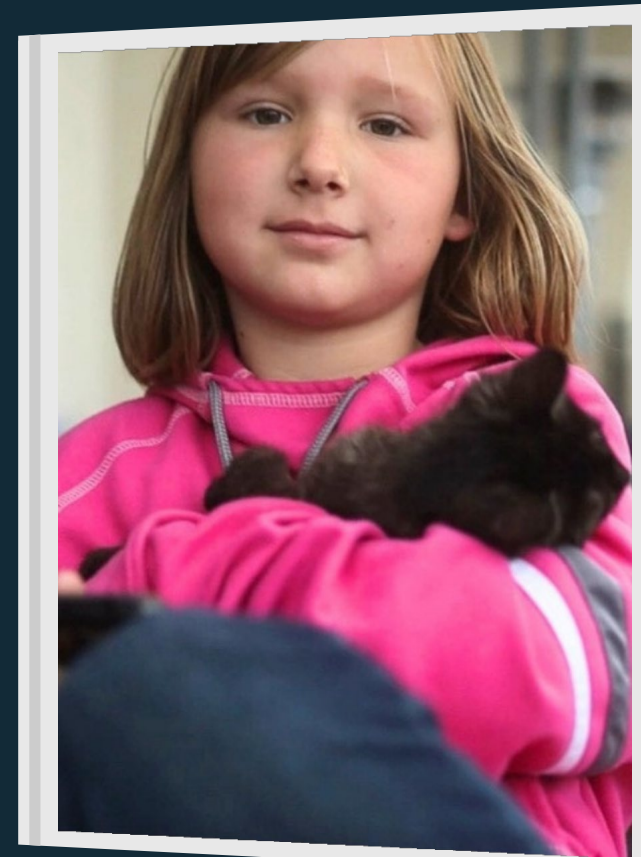
Available to individuals experiencing homelessness  
or fleeing domestic violence

## Women's Shelter

- Safe refuge from domestic violence
- Kennels for Dogs & Cats
- Locker & Bin Storage

## Family Shelter

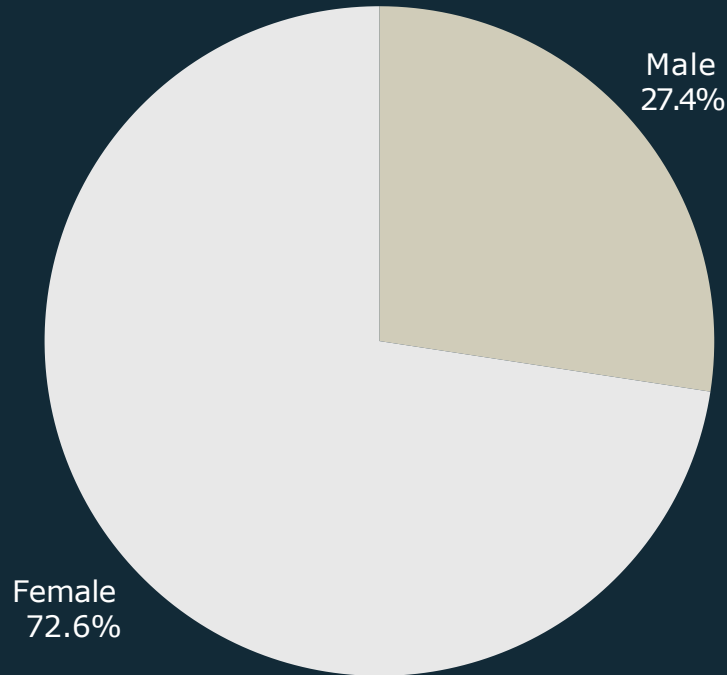
- 2 Family rooms
- Intact Families
- Single fathers with children
- Connection to School District Liasons
- Connection to free tutoring/mentoring



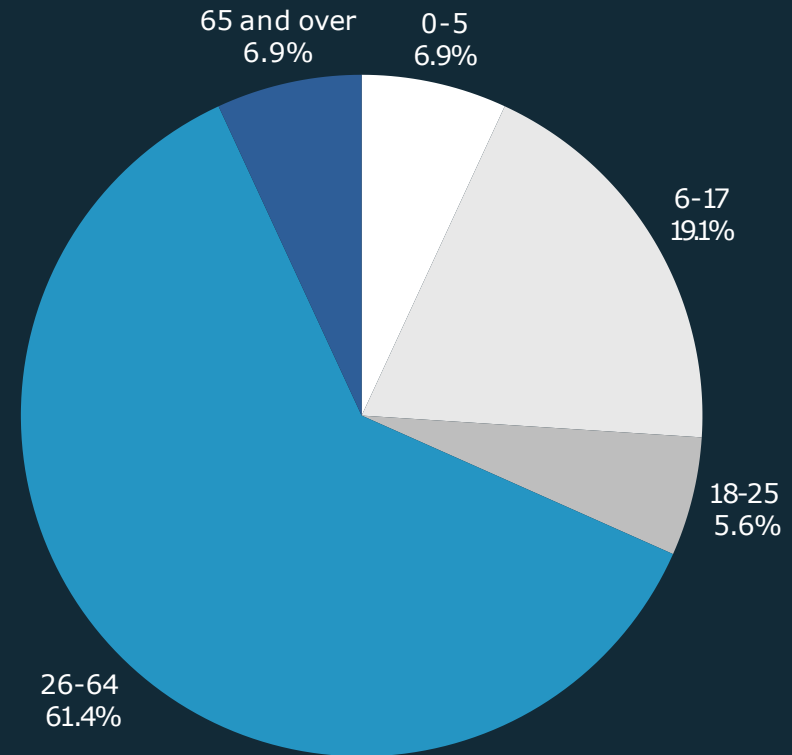


# Shelter Demographics

Of those with a bed night stay



Gender



Age Group



# Nourish Culinary Training Program

Job Readiness Program



- Food Safety
- Food Handler's Card
- Nutrition Education
- Restaurant Training
- Food Truck
- Cafe



- Gain Work Experience
- Develop a work ethic
- Team building
- Community Service
- Catering events

Empowers clients with valuable work skills and hands-on training to be successful in the culinary industry, as well as the soft skills to be successful any industry.

# Nourish Restoration Program

- Ace Overcomers
- Boundaries
- Communication
- Anger Management
- Relapse Prevention
- Alcoholics Anonymous
- Celebrate Recovery
- Bible Study
- Job Readiness Program





# Meal Services

Meals



Food Box



Mobile Food Bank





# Community Health Workers

Resources available to those enrolled in Medi-Cal



Health Education



Health Navigation



Advocacy



Case Management



Tele-Medicine



Wellness Checks



Prescription Delivery



Access to bathroom and showers 24/7



# Community Partners

1

Stanislaus County Office of Education

2

CSU Stanislaus College Corps

3

Second Harvest of the Greater Valley

4

Prodigal Sons & Daughters

5

Haven

6

Local Churches & Donors

7

Boies Pharmacy

8

Pets of the Homeless

Looking for Connections to:

- More comprehensive Behavioral Health Services
- More access to low-income housing



# Success Stories

14 individuals successfully transitioned out of shelter and found housing in the 2024



## Meet Maria

Nourish Culinary Graduate  
Nourish Restoration Graduate  
Employment  
Housing  
Recovery Sponsor



## Meet Edward

Nourish Culinary Graduate  
Nourish Restoration Graduate  
Employment  
Housing  
Class A License



## Meet Damien

Nourish Culinary Graduate  
Nourish Restoration Graduate  
Employment  
Housing  
HS Diploma



# Thank you!

Questions??

For more info, visit [turlockgospelmission.org](http://turlockgospelmission.org)

# Agenda Item V – General Membership Announcements





# Adjournment

Next Meeting: Wednesday, April 9, 2025

If you have any questions or comments, please contact [CSA-SHA\\_Email@stancounty.com](mailto:CSA-SHA_Email@stancounty.com)