



Stanislaus Homeless Alliance

A collaborative entity formed to align homelessness services, planning, and funding among stakeholders in Stanislaus County.

Wednesday, May 14, 2025

Agenda

- I. Roll Call – Stanislaus Homeless Alliance Representatives
- II. Public Comment Period
- III. Action Items
- IV. Informational Items
- V. General Membership Announcements
- VI. Adjournment

Agenda Item I – Roll Call

Agency	Primary Voting Member	Alternate Voting Member
City of Ceres	Rosalinda Vierra	Mayor Javier Lopez
City of Modesto	David Wright	Nick Bavaro
City of Oakdale	Christopher Smith	Jerry Ramar
City of Patterson	Gabriela Hernandez	Kendra Mora
City of Riverbank	Stacy Call	Marisela Garcia
City of Turlock	Cassandra Abram	Kevin Bixel
City of Waterford	Elizabeth Talbott (Co-Chair)	Christine Harris
Community System of Care	Fred Berry	Maryn Pitt
Focus on Prevention	Brad Hawn (Chair)	Tim Byrd
Stanislaus County	Terry Withrow	Ruben Imperial
Stanislaus Regional Housing Authority	Carlos Estacio III	Jim Kruse

Agenda Item II – Public Comment Period

*PUBLIC COMMENT: Matters under the jurisdiction of the SHA and not on this posted agenda may be addressed by the general public at this time. However, California law prohibits the SHA from taking any action on a matter that is not on the posted agenda unless it is determined to be an emergency by the SHA. Any member of the public wishing to address the SHA during the “Public Comment” period shall be permitted to be heard once for up to **5** minutes.*

To make a comment please complete a Request to Comment form (available at the entrance to Chambers) and provide it to staff. Speakers will be recognized by the SHA Chairperson and called to the podium to speak in the order of receipt.

Agenda Item III – Action Items

- a. April 2025 Minutes

Agenda Item III(a.) – Action Items

Approval of Minutes for April 2025 Meeting

Agenda Item IV – Informational Items

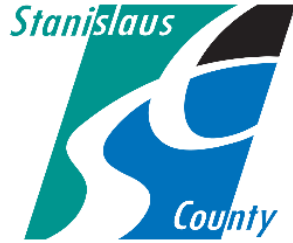
- a. Behavioral Health Outreach and Engagement (BHOE)
- b. Dignity Village

Agenda Item IV (a.) – Informational Items

Behavioral Health Outreach and Engagement (BHOE)

Guest presenter: Susan Gold, Ph.D. Clinical Psychologist and Program Coordinator,
Stanislaus County Behavioral Health & Recovery Services





BEHAVIORAL HEALTH AND RECOVERY SERVICES

Director Ruben Imperial, MBA

BEHAVIORAL HEALTH OUTREACH AND ENGAGEMENT (BHOE)
and ASSISTED OUTPATIENT TREATMENT (AOT)
PROGRAM OVERVIEWS
May 14, 2025

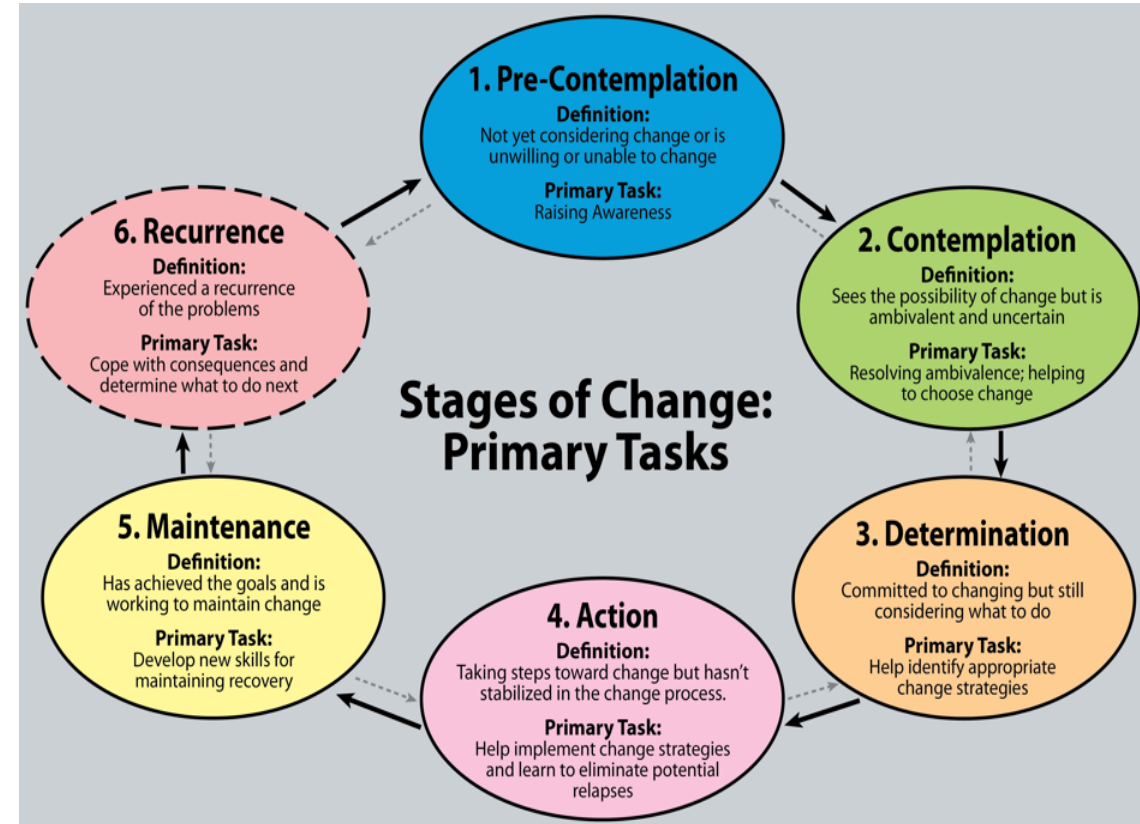
Presentation To: Stanislaus Homeless Alliance (SHA) Monthly Board Meeting
Presenter: Susan L. Gold Ph.D. Clinical Psychologist and Program Coordinator



WHAT IS OUTREACH AND ENGAGEMENT?

HOW DOES BHOE and AOT PROVIDE OUTREACH AND ENGAGEMENT?

- Multi-disciplinary Approach: Clinicians, Behavioral Health Specialists, Peer Support Specialists and Family Advocates
- OUTREACH- “Not now. I’ll think about your services.”
- ENGAGEMENT “Yes, I am willing to try your services.”

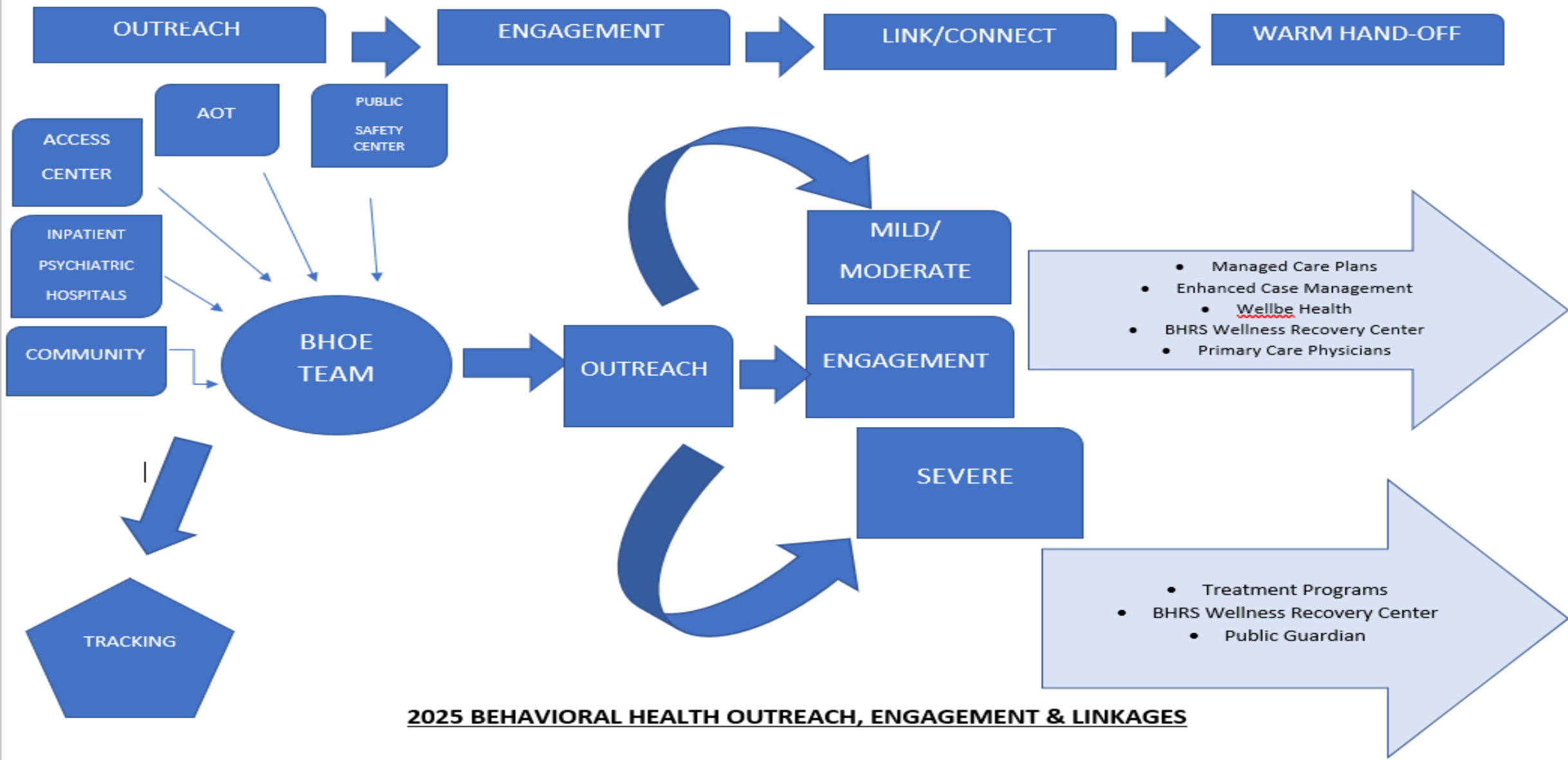




WHAT IS OUTREACH AND ENGAGEMENT?

WHERE DOES BHOE and AOT PROVIDE SERVICES?

- Within Stanislaus County's communities
- On the streets
- In hospitals- Medical and Psychiatric,
- Private homes
- Sheds, garages
- Train tracks
- Behind buildings
- In shelters
- Local jail
- Transitional housing sites
- Primary care physician offices
- Mental health and substance use treatment programs



VISION
Stanislaus County

Becoming a community of choice,
where people live, work, and thrive -
a place worthy of calling home.



MISSION

**WE BUILD
COMMUNITY**

VALUES

We believe **EACH PERSON MATTERS**
We work every day to earn people's **TRUST**
We are **GOOD PARTNERS**
We encourage **INNOVATION**



BHOE and AOT Teams

Behavioral Health Specialists

- Provide Outreach, Engagement and Linkages to Specialty Mental Health services and community resources. - 7 staff

Mental Health Clinicians

- Provide Time Sensitive Mental Health Assessments, to link to Specialty Mental Health Services and community resources. – 3 staff

Support Services

- **Peer Support Specialists** inspire hope in those engaging in services, by living a life of recovery and resiliency. - 1 staff
- **Family Advocates support**, educate and empower the families – 2 staff

Coordinator – Clinical Psychologist

Administrative Clerk III- 1 staff



Priority Sectors of BHOE Services, 2021 to Present

In 2021, BHRS identified Five (5) Priority Sectors of Underserved, Unserved Populations

1. Community
2. Access Center
3. Hospitals
 - Tenet Doctors Behavioral Health "DBHC "
 - Telecare Psychiatric Hospital Facility "PHF"
 - Out of County Diversions
4. Assisted Outpatient Treatment AB 1421 Program
5. In-Custody and Law Enforcement



Referrals & Building Connections

1. Community

Sources of Referrals Requesting BHOE Community Linkages and Support Services

- County Access Center * and County Programs Serving Unsheltered & Unsheltered Adults (* Will detail)
- Adult System of Care Treatment Teams
- Forensic Program: CARE 1.0
- BHRS Access and Support Line
- Families- Within California and Out of State
- Physicians
- County Departments
- BHRS Senior Leadership
- Assisted Outpatient Program- Did Not Meet Statutory Criteria
- Out of County Behavioral Health Departments
- Stanislaus County Customer Center "SCCRM"
- BHRS Substance Use Disorder System of Care
- Community Referrals



The BHOE Program Provides:

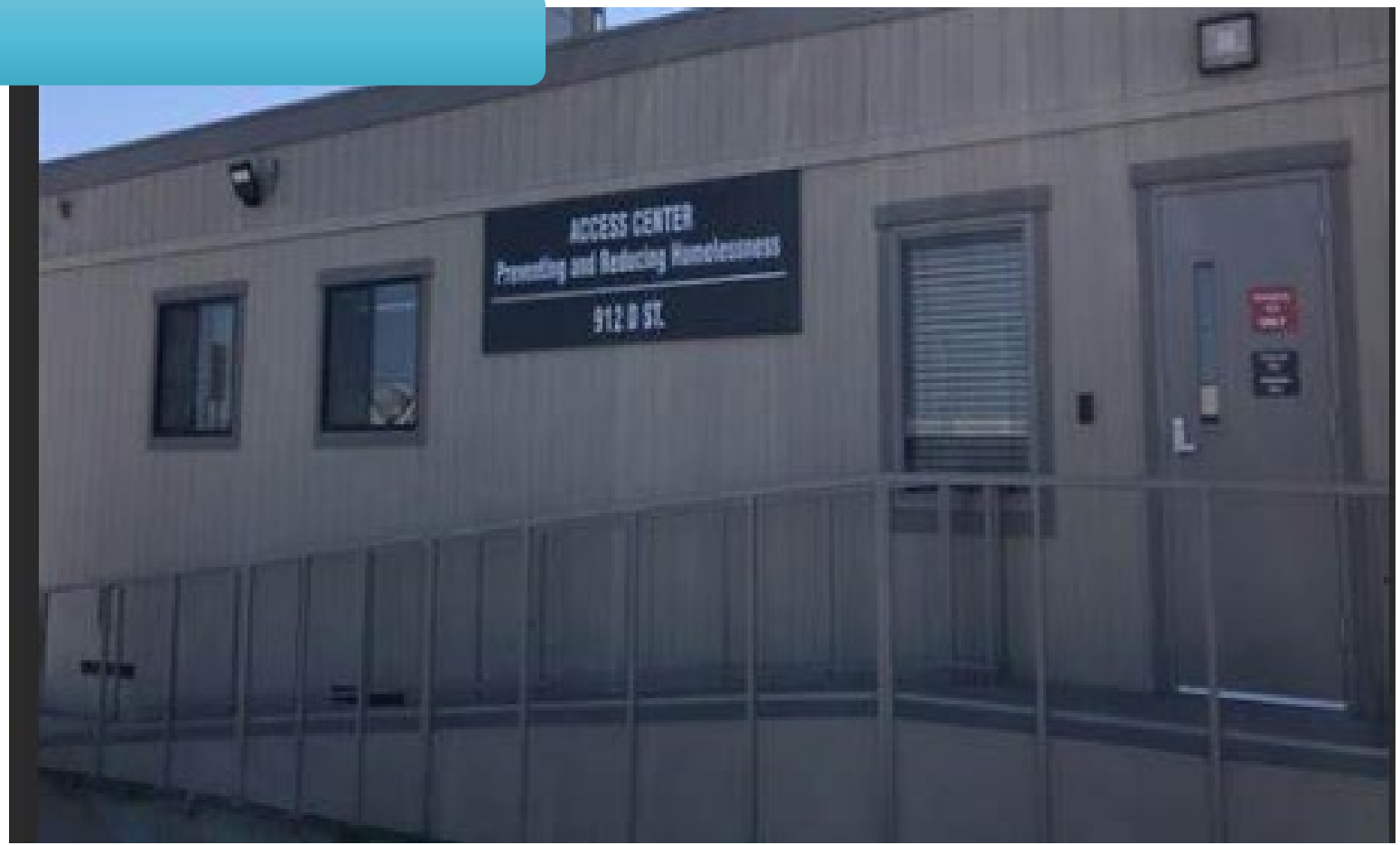
- Outreach, Engagement services
- Linkages With Adults and their Families to Specialty Mental Health Services
- Referrals and linkages to community supports
- Collaborate with treatment team's ongoing efforts



BHOE Program Partnership with Stanislaus County Access Center 912 D Street in Downtown Modesto

2. Access Center

- Crisis Support
- Outreach in the Community and Encampments
- Engagement and Linkages to Behavioral Health and Community Resources



In-Hospital Outreach and Engagement Services

3. Hospitals

- Tenet Doctors Behavioral Health Center “DBHC”, 67 bed capacity (Modesto)
- Telecare Psychiatric Hospital Facility, 16 bed capacity (Ceres)
- At admission → Outreach
- During Admission → Engagement → Urgent Referral For BHOE MH Assessment
- Pre- Discharge: To Link to an Outpatient Treatment Team and Screening For SUD services





4. Assisted Outpatient Treatment AB 1421 Program



**Assisted Outpatient Services, "AOT"
Came from Laura's Law**

California AB 1421, effective since 2003. Named after Laura Wilcox, fatally shot by someone with severe mental illness who did not agree to treatment. Law is intended to prevent this from happening in the future by court-ordered treatment for those who are eligible.

Eligibility:

- ✓ **County Resident, minimum of age 18**
- ✓ **Serious Mental Disorder**
- ✓ **Person Unlikely to survive safely in in the community**
- ✓ **History of lack of compliance with mental health treatment, indicated by:**
 - *Hospitalized: 2x in the last 36 months (from the date of referral) OR
 - * Treated in jail/prison:2x in the last 36 months OR
 - * Serious & violent acts, threats or attempts to harm self/others 3x in the last 48 months
- ✓ **Voluntary treatment has been offered and refused**
- ✓ **Condition is deteriorating**
- ✓ **Least restrictive placement option**
- ✓ **Necessary to prevent 5150 holds**
- ✓ **Will benefit from treatment**



4. Assisted Outpatient Treatment AB 1421 Program

AOT Team Members

- Mental Health Clinician – 1 staff
- Behavioral Health Specialists – 2 staff
- Family Advocate – 1 staff
- Peer Support Specialist – 1 staff

The AOT Program Provides:

- Outreach and engagement services
- Linkages with adults and their families to specialty mental health services
- Referrals and linkages to community supports
- Collaborate with treatment team’s ongoing efforts

To Refer: Contact BHRS Access and Support Line, 1-888-376-6246, available 24/7
Questions: Contact AOT Program 209- 525-7444, Monday – Friday, 8:00 – 5:00



5. In-Custody and Law Enforcement



California P.C. 4011.6

4011.6 members are transferred from the Public Safety Center to DBHC for psychiatric stabilization. They are not always open to a BHRS treatment team. This recommendation comes from the court and Deputy- who places the Hold and stays with the member throughout the duration at DBHC. The member is still in custody status and always accompanied by a deputy at DBHC then immediately returned to the Safety Center.

BHOE Collaborates with the BHRS Collaborative Court Public Safety Center Team and DBHC.

We provide the Urgent Mental Health Assessment and Linkages at DBHC, to link the individual to a BHRS Treatment Team

California P.C. 1368

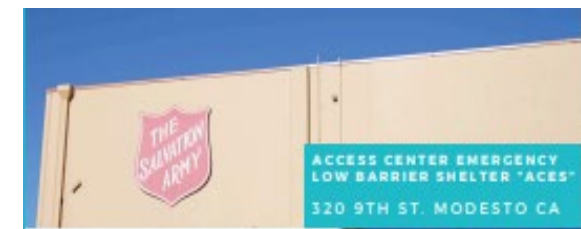
1368 pertains to an individual who is found mentally incompetent because of a mental disorder or development disability, by the Court Experts. The adjudication is suspended. If the individual declines participating in an In Custody Mental Health Assessment, BHRS' Public Guardian Department attempts to evaluate for evidence of Grave Psychiatric Disability. The individual is transferred from the Public Safety Center, to DBHC for further evaluation, treatment and possible LPS. Conservatorship. |



Community Support

- Homeless shelter placements
- Dignity Village referrals
- Temporary placements at facilities to connect to therapeutic services
 - Men's Rest Home
 - Hope House
 - Garden Gate Respite

- Referrals to Substance Use treatment
- Connection to Peer Support, Family Advocates, and Employment services





CONTACTS

Behavioral Health Outreach & Engagement (BHOE)
209- 525-7470

Assisted Outpatient Program
209- 525-7444

**HOURS: Monday-Friday, 8:00 – 5:00 and
5pm-7pm as needed**
Address: 1904 Richland Avenue, Ceres



County Access Center

912 D Street in Modesto
209-272-8800

Tuesday and Thursdays
8:00 – 5:00 and 5-7pm as needed





*BHOE AND AOT TEAM MEMBERS-Acknowledgments

Behavioral Health Specialists: Provide Outreach, Engagement and Linkages to Specialty Mental Health services and community resources. Juan Aguilar BHSII, Connie Chavarria BHSII, Nick Guzman BHSII, Pedro Leitao, BHSII, Eddie Menchaca BHSII, Felix Ruiz BHSII and Marissa Shovelski BHSII.

Mental Health Clinicians: Provide Time Sensitive Mental Health Assessments, to link to Specialty Mental Health Services and community resources.

Jennifer Tercero, LMFT, Chloe Peepgrass, AMFT and Rosa Cardoso, ASW. (Olivia Vazquez, APCC 2023-2025).

Support Services

Peer Support Specialists Inspire Hope in those engaging in services, by living a life of Recovery and Resiliency. Richard Campbell- Peer Support Specialist

Family Advocates: Support, Educate and Empower The Families

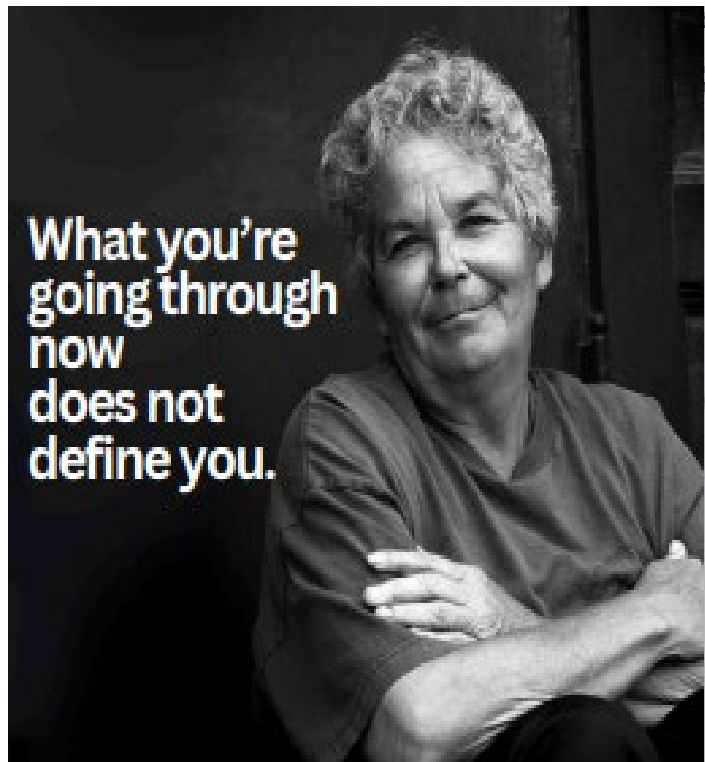
Juanita Espinoza AOT Family Advocate and Melissa Farris BHOE Family Advocate.

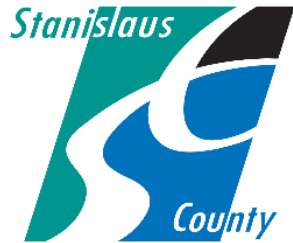
Administrative Support: Amanda Mejia, ACIII

Program Coordinator ; Susan Gold, Ph.D.



QUESTIONS





BEHAVIORAL HEALTH AND RECOVERY SERVICES

Director, Ruben Imperial, MBA

Thank you!

Agenda Item IV (b.) – Informational Items

Dignity Village

Guest presenter: Ruben Imperial, Behavioral Health Director



BEHAVIORAL HEALTH &
RECOVERY SERVICES



Dignity Village Housing Project

RUBEN IMPERIAL
DIRECTOR

Project Partners

County BHRS funded construction, funds operations, and provides services for residents at the campus.

BHRS partnered with DignityMoves as the project developer.

UP Holdings and RH Developers (Modesto BHBH, LP) have contracted to manage property, maintenance, and security services at the site, using BHBH funds to support these efforts.

The City of Modesto leased city owned land to Modesto BHBH for the site and funded \$325,000 toward wet unit construction costs.



Infrastructure Development Costs	Cost
Modular Units	\$813,453
Site Improvements	\$226,468
Underground Work	\$340,000
Facility Improvements	\$348,100
Modular Unit Placement	\$335,500
General Contractor Fees and Contingency	\$300,016
<i>Subtotal Hard Costs and Contingency</i>	<i>\$2,363,537</i>
<i>Subtotal Soft Costs, Furnishing, Fixtures, and Equipment</i>	<i>\$659,500</i>
Total Project Cost (Not to Exceed)	\$3,023,037
Annual Operations Projected Budget	Cost
Annual Operations Projected Budgets	\$1,022,578
Total Estimated Operational Budget for 3 years	\$3,067,734

Dignity Village Project costs

BHBH Round 1 Infrastructure Grant funds contributed to total project costs of \$3,023,037.

BHBH Round 3 Grant- total project costs Shelter/Interim Housing Programs \$1,008,040.

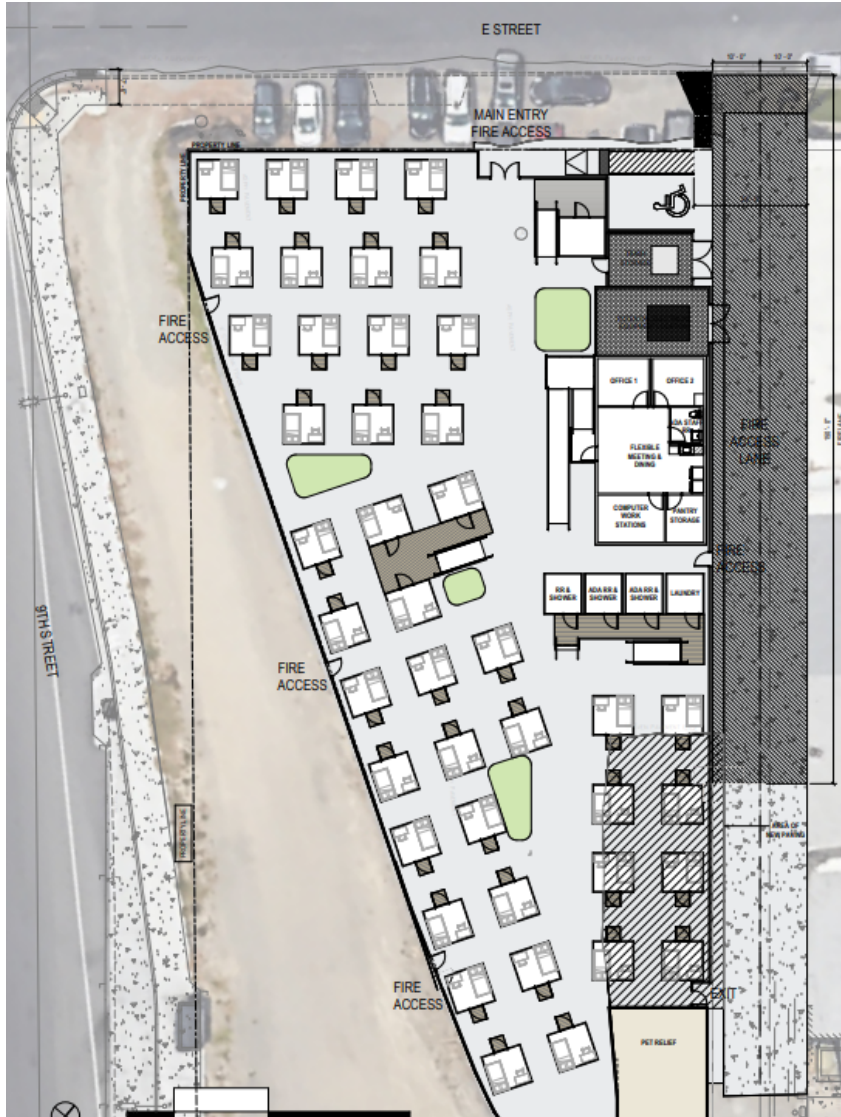
Priority Populations Served at Dignity Village

The BHBH Program primarily aims to meet the immediate and long-term housing needs of individuals experiencing homelessness with serious mental illness (SMI) and/or substance use disorder (SUD).

Individuals with serious mental illness and /or substance use disorder and are homeless.

Priority for the above population is individuals enrolled in Care Court.





Site Plan

42- sleeping cabins (3-units for accessibility needs)

Shared accessible restrooms and showers

Warming kitchen within a multi-purpose space

Laundry facility on-site

Dog run

Social areas

Agenda Item V – General Membership Announcements





Adjournment

Next Meeting: Wednesday, June 11, 2025

If you have any questions or comments, please contact CSA-SHA_Email@stancounty.com