



# Stanislaus Homeless Alliance

*A collaborative entity formed to align homelessness services, planning, and funding among stakeholders in Stanislaus County.*

Wednesday, August 13, 2025

# Agenda

- I. Roll Call – Stanislaus Homeless Alliance Representatives
- II. Public Comment Period
- III. Action Items
- IV. Informational Items
- V. General Membership Announcements
- VI. Adjournment

# Agenda Item I – Roll Call

| Agency                                | Primary Voting Member        | Alternate Voting Member |
|---------------------------------------|------------------------------|-------------------------|
| City of Ceres                         | Rosalinda Vierra             | Mayor Javier Lopez      |
| City of Modesto                       | David Wright                 | Nick Bavaro             |
| City of Oakdale                       | Christopher Smith            | Jerry Ramar             |
| City of Patterson                     | Gabriela Hernandez           | Kendra Mora             |
| City of Riverbank                     | Stacy Call                   | Marisela Garcia         |
| City of Turlock                       | Cassandra Abram              | Kevin Bixel             |
| City of Waterford                     | Elizabeth Talbott (Co-Chair) | Christine Harris        |
| Community System of Care              | Fred Berry                   | Maryn Pitt              |
| Focus on Prevention                   | Brad Hawn (Chair)            | Tim Byrd                |
| Stanislaus County                     | Terry Withrow                | Ruben Imperial          |
| Stanislaus Regional Housing Authority | Carlos Estacio III           | Jim Kruse               |

# Agenda Item II – Public Comment Period

*PUBLIC COMMENT: Matters under the jurisdiction of the SHA and not on this posted agenda may be addressed by the general public at this time. However, California law prohibits the SHA from taking any action on a matter that is not on the posted agenda unless it is determined to be an emergency by the SHA. Any member of the public wishing to address the SHA during the “Public Comment” period shall be permitted to be heard once for up to **5** minutes.*

To make a comment please complete a Request to Comment form (available at the entrance to Chambers) and provide it to staff. Speakers will be recognized by the SHA Chairperson and called to the podium to speak in the order of receipt.

# Agenda Item III – Action Items

- a. June 2025 Minutes

## Agenda Item III(a.) – Action Items

Approval of Minutes for June 2025 Meeting

## Agenda Item IV – Informational Items

- a. Stanislaus County Veterans Services Office
- b. Stanislaus County Point in Time (PIT) Report
- c. Stanislaus County System of Care (CSOC) Mapping Project

# Agenda Item IV (a.) – Informational Items

Stanislaus County Veterans Services Office

*Guest presenter: Ryan Kegley, County Veterans Services Officer & Juan Dennys, Veterans Homeless Outreach Coordinator*

# Veteran Housing Resources

STANISLAUS HOMELESS ALLIANCE PRESENTATION



Presented: August 13, 2025

# Stanislaus County Veterans Services Office

## We assist:

- Veterans
- Widows of a Veteran
- Children of a deceased or totally disabled Veteran
- Parent of a deceased Veteran

## With claims preparation for:

- Compensation for service-related injuries
- Pension for war era Veterans (Non-service connected)
- Widows Pension
- Dependent and Indemnity Compensation
- VA medical care
- Education benefits (Voc Rehab, CA Fee Waiver, GI Bill)



# What Benefits and Services are Available to Veterans?



# VA Healthcare

## Basic Eligibility

- A person who served in the active military
- Discharged under conditions other than dishonorable
- Gross HH income limit  
[NationalIncomeLimits.vaftl.us](http://NationalIncomeLimits.vaftl.us)

**Note:** Reservists or National Guard may qualify if they were called to active duty

## Benefits:

- Free or Low-cost prescriptions
- Free or Low-cost doctor visits
- Free or Low-cost glasses & hearing aids



# VA Pension

## Basic Eligibility

- War time service
  - WWII 1941–1946
  - Korean War 1950–1955
  - Vietnam War 1961–1975
  - Gulf War 1990–TBD
- Age 65+ or Disabled
- Income & Property Limit

## Benefits:

- Over \$1,400.00 in monthly benefits
- Up to an additional \$945.00 in Aid & Attendance for Veterans with a medical need



# Dependency and Indemnity Compensation (DIC)

## Basic Eligibility

- Spouse, parent or child of a Veteran who:
  - Died on active duty, or
  - Died from service-connected condition, or
  - Died and had been rated totally disabled for 10 years or more

## Benefits:

- Tax free monetary benefit
- Basic rate \$1254.00
- Each dependent child \$310



# Service-Connected Disability Compensation

## Basic Eligibility

- Have a service-connected disability
- Discharged under other than dishonorable conditions



## Benefits:

- Veteran alone: up to \$3,831.30 monthly in tax-free benefits
- Married Veteran with two dependents: up to \$4,307.49

**Note:** Does not have to be a combat injury. Any injury or illness suffered or aggravated while in service may be considered

# Modesto Access Center



Visit the Access Center For help with these services:

- Centralized Homelessness Outreach and Engagement
- Public Assistance Applications
- Housing Assessments and Navigation
- Homelessness Support Services Referrals
- Homeless Court
- Outreach & Navigation

# VA & Affiliate Programs

## HUD-VASH

- HRG Meeting- 2<sup>nd</sup> & 4<sup>th</sup> Wednesdays, Modesto Clinic
- As long as they do not have a 290 conviction and dishonorable discharge
- Permanent Housing Vouchers & Case management

## Compassion Residio

- Senior Program- Veterans 50 years and older, eligible to VA Healthcare: up to 90 days → transitional → permanent
- Medically Needy Program- Can be considered transitional housing: up to 90 days → transitional → permanent

## Dignity's Alcove

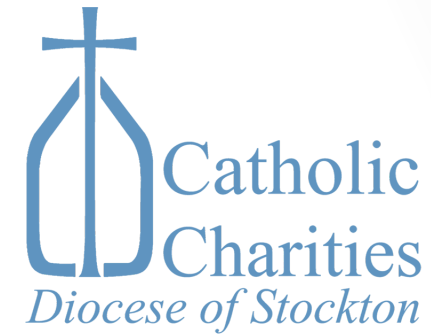
- 24-month Transitional Housing for Veterans experiencing homelessness
- Substance Use Counselling and case management



# VA & Affiliate Programs

## Catholic Charities

- SSVF Grant-Serve homeless veterans and those at risk of becoming homeless by providing wrap-around supportive services: rental assistance, utility payments, household items, childcare, transportation, medical/mental health referrals, affordable health care, housing navigation, money management, food/nutrition assistance and much more
- Shallow Subsidies helps homeless and at-risk Veterans struggling with housing costs

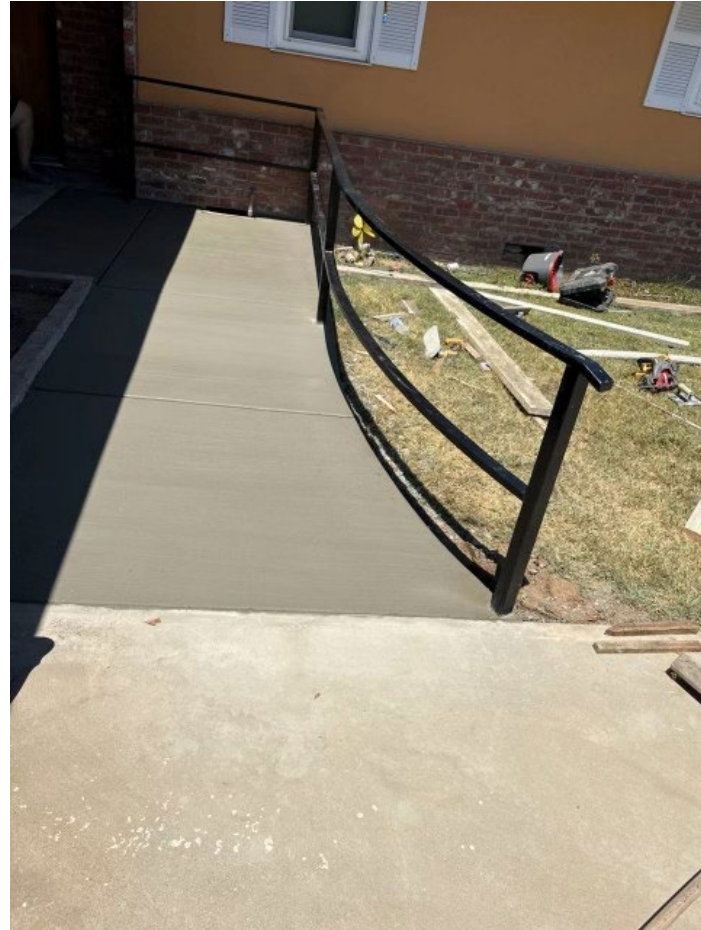


## WestCare- San Joaquin Valley Veterans

- Potential housing and utility assistance
- Case Management
- Treatment & Rehabilitation
- Mental Health Wellness resources



# What we do.....



# QUESTIONS?

# Presented by



## *Stanislaus County Veterans Services Office*

Ryan Kegley  
Veterans Services Officer

---

Juan Dennys  
Social Worker

**209.558.7380**

# Agenda Item IV (b.) – Informational Items

Stanislaus County Point in Time (PIT) Report

*Guest presenter: Melissa Lehman, HMIS Staff Services Analyst, Stanislaus County  
Community Services Agency*



20  
25

Stanislaus  
County  
PIT Count Results

-----  
Prepared by HMIS Team



## What is the PIT?

- **The count is a snapshot in time (one single night) used to calculate the number of individuals experiencing homelessness and gain a better understanding of individuals who are homeless in our community**
- **Mandated by the Department of Housing & Urban Development (HUD)**
- **Implemented by Continuum of Care agencies across the nation**
- **Contributes to the national Annual Homeless Assessment Report (AHAR)**
- **Informs policy-making and used to determine funding allocations to address homelessness**
- **Takes place annually, the last 10 days of January**

# PIT PROCESS



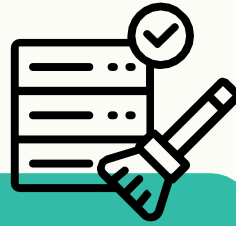
## DATA COLLECTION

Sheltered & Unsheltered Count; HIC reports submitted to HMIS by agencies.



## DATA REVIEW

HMIS Team reviews all data received.



## DATA CLEAN-UP

Unusable surveys are archived; data organized, and errors cleaned.



## DATA SUBMISSION

All data is submitted to HUD by HMIS team.



## HUD REVIEW

HUD reviews all data and will reach out for any additional data corrections or explanations.

# Results Overview

2086

**Total Reported**

1783

**Total Households**

1838

**Interviewed**

248

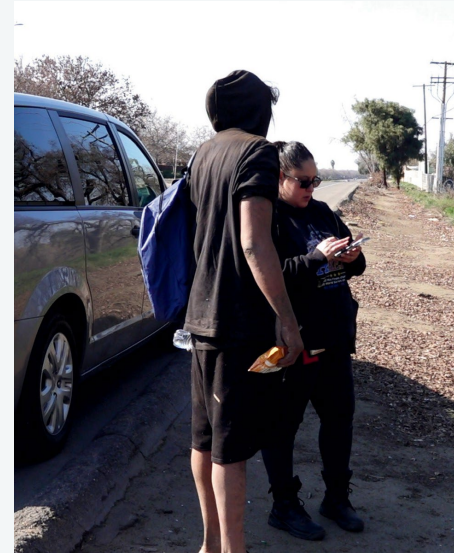
**Observations**

1136

**Sheltered**

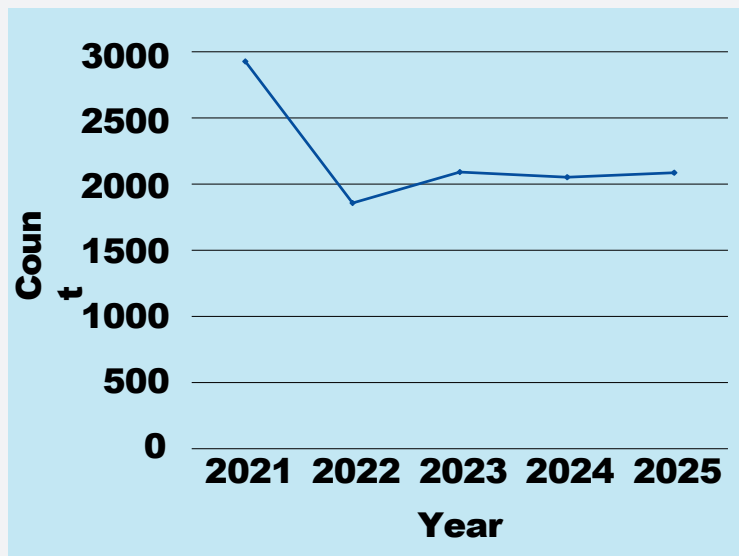
702

**Unsheltered**



# 2024 vs. 2025

## PIT Longitudinal Trend



### Count Totals

2021 = 2927

2022 = 1857

2023 = 2091

2024 = 2052

2025 = 2086

136

Less

Observations

Unsheltered

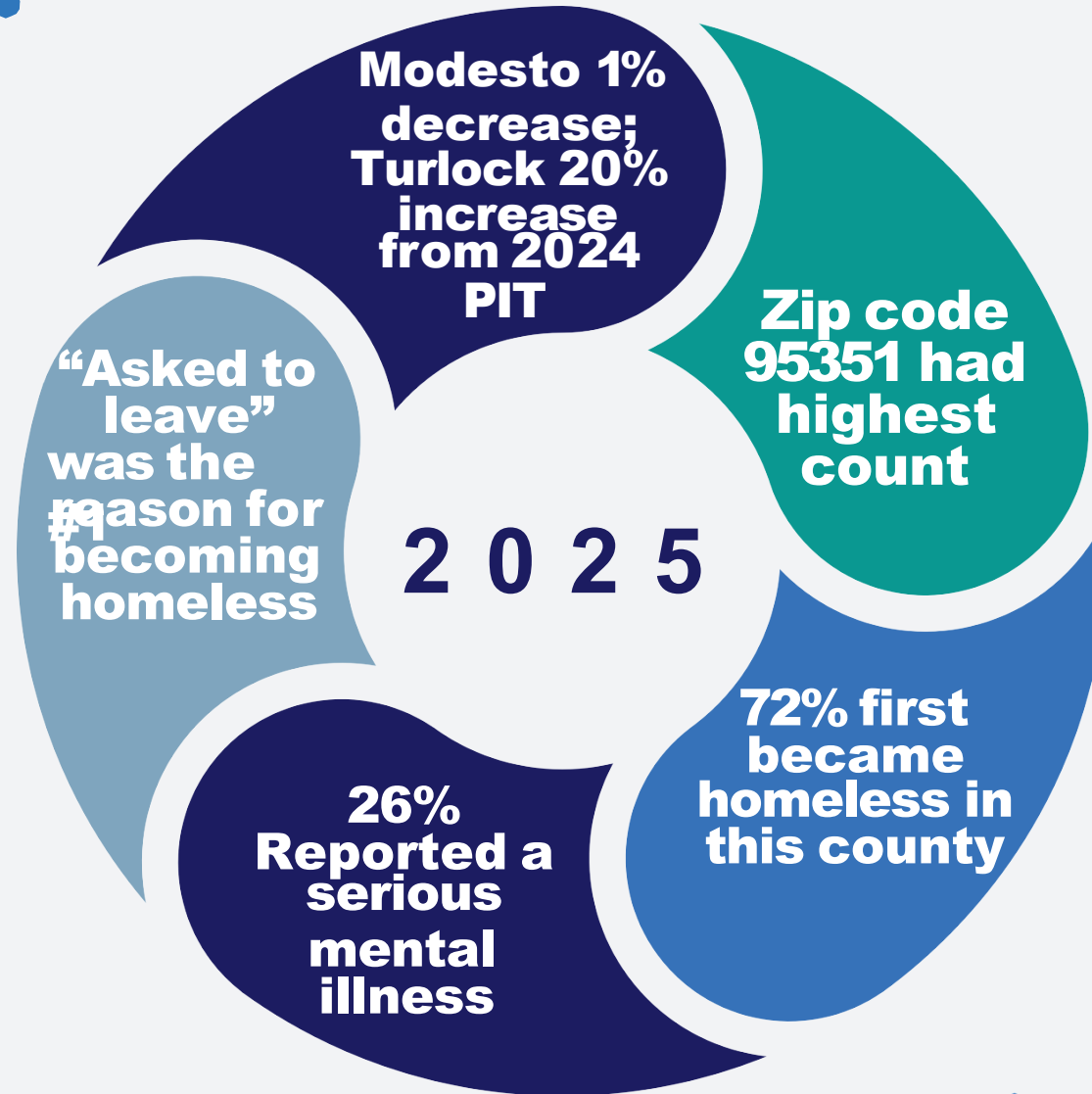
3%

sheltered

6%



# 2025 PIT at a glance.....





**2 0 2 5**

**68%**

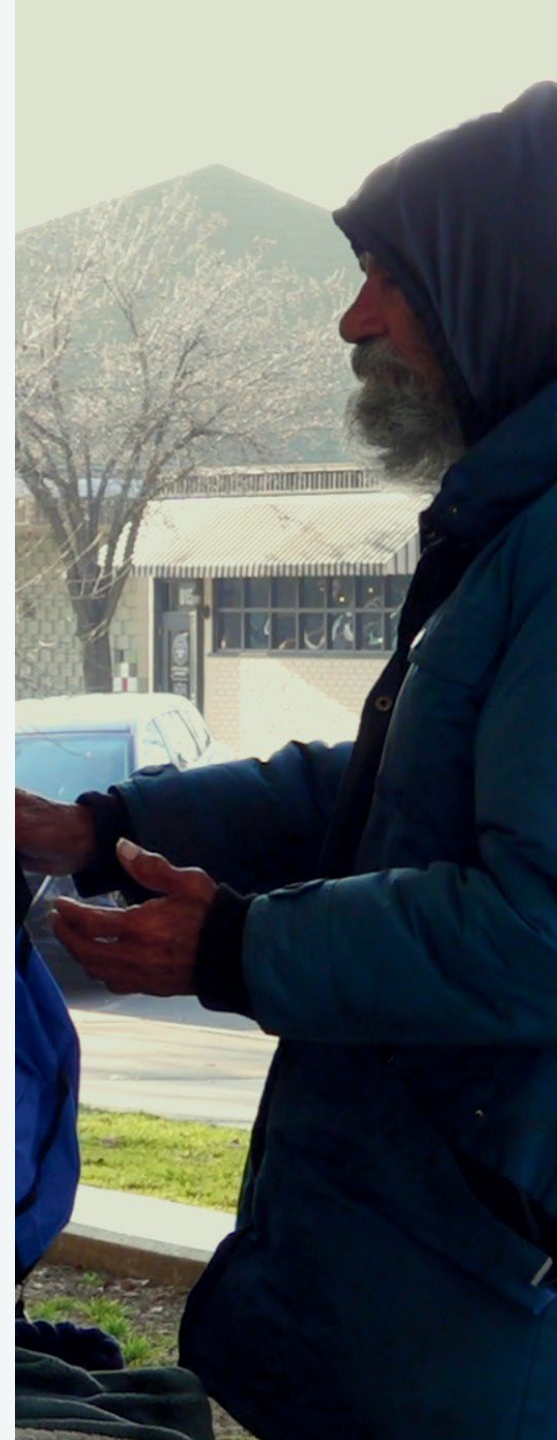
**Have been homeless in Stanislaus Co. for more than 36 months**

**50%**

**Have been in jail or prison**

**55%**

**Receive Public Assistance**



# VOLUNTEERS



266 individuals volunteered for the 2025 PIT count; 87% (232) participated in completing surveys for both the shelter and unsheltered counts.



**Thank You!**

*2025 PIT Command Center  
Team*

**We would like to take a moment to thank all who participated in the 2025 Stanislaus County Point in Time Count. We appreciate your time and efforts and look forward to continued partnerships.**

# Agenda Item IV (c.) – Informational Items

Stanislaus County System of Care (CSOC) Mapping Project

*Guest presenter: Maryn Pitt, Policy Director, Manufacturers Council of the Central Valley*



# Stanislaus Community System of Care

# Mapping Project

---





Annual Point  
in Time Count  
tells us who  
our people  
experiencing  
homelessness  
are

A TOOL FOR DATA BUILDING  
STRATEGIES

# Asking the next questions.....

- Are the types of shelter provided in Stanislaus County match to those in need of shelter?
- Are the services that are available match the needs of those in need?
- Are there enough services?
- Is there duplication of services?
- Are there gaps in services?



# The Mapping Project

---

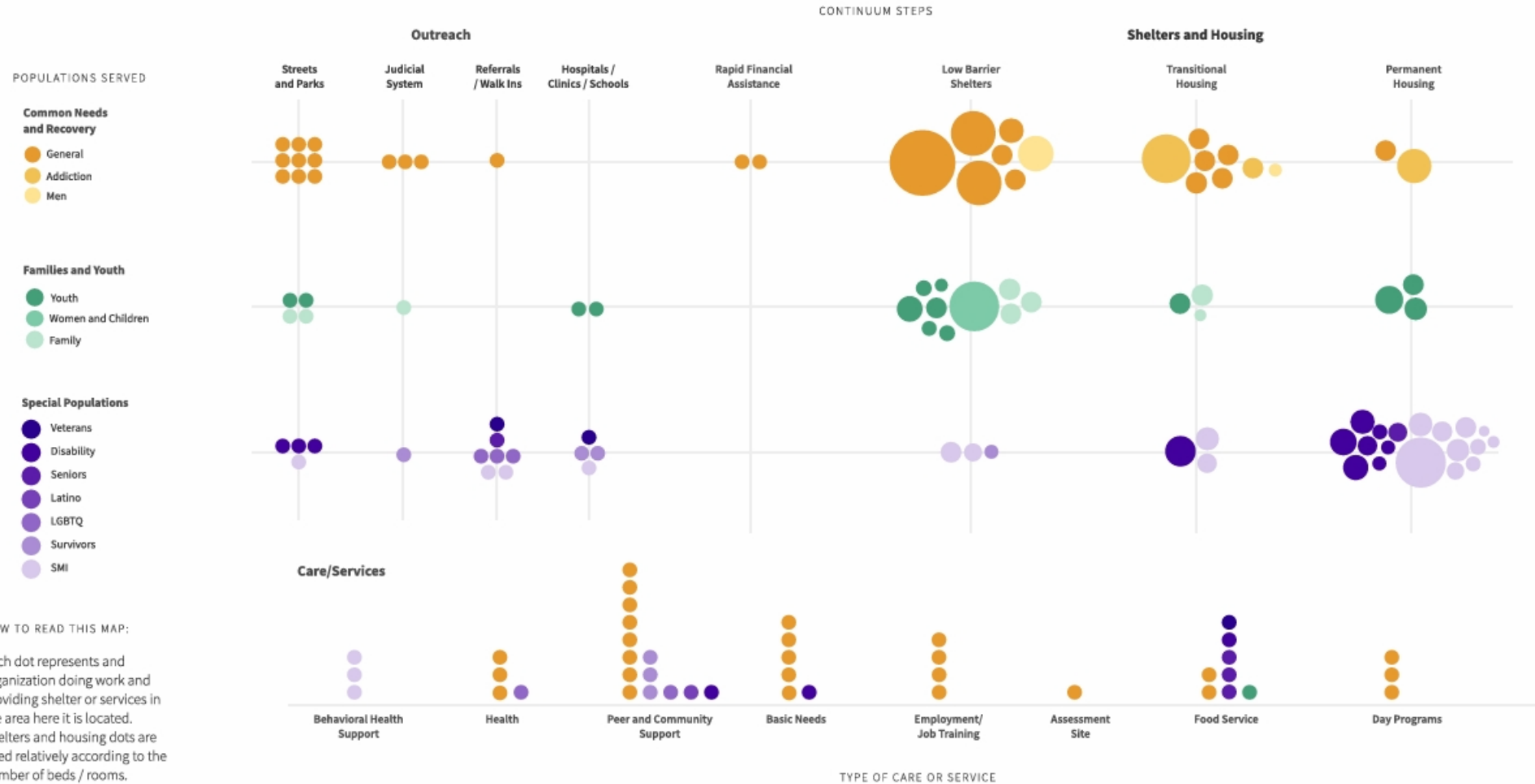
- Why?
- What did we hope it will tell us?
- How will we use the results?
- What else will we learn?



# Stanislaus County Continuum of Care

## Systems Map of Services, Shelters, and Housing

Designed to support the Stanislaus County Continuum of Care, this map highlights gaps, opportunities, and areas of sufficiency in homeless services, offering a comprehensive visual for addressing homelessness across the community.



### HOW TO READ THIS MAP:

Each dot represents an organization doing work and providing shelter or services in the area here it is located. Shelters and housing dots are sized relatively according to the number of beds / rooms.

# Takeaways

---

What we know is that we all need to be pulling in the same direction.

Funding decisions on future funds made available to the CSOC and County will be data informed decisions to leverage and maximize results.


This system is not etched in stone but rather is a starting place to track how people experiencing homelessness move through our system.

Bonus was a large database of service providers that helps other providers and agencies connect with each other to better work together.

1.

2.

3.



# Stanislaus Community System of Care

- ▶ Stay calm
- ▶ Actively listen
- ▶ Pause and reflect
- ▶ Maintain eye contact

## Questions?

---



# Thank you

---

Maryn Pitt, Chair

Community System of Care

[Maryn@mccv.org](mailto:Maryn@mccv.org)

(209) 485-5017

# Agenda Item V – General Membership Announcements





# Adjournment

Next Meeting: Wednesday, September 10, 2025

If you have any questions or comments, please contact [CSA-SHA\\_Email@stancounty.com](mailto:CSA-SHA_Email@stancounty.com)